



**Moray Road – N4 3LD**  
**£2,300 pcm**

**DAVID  
ANDREW**

your  
most  
valuable  
asset



# Flat B, 55 Moray Road

London

Ideally situated just moments from Finsbury Park Station, this spacious two-bedroom apartment offers a rare opportunity for comfortable and contemporary urban living.

Beautifully arranged across 49 sqm, the property features a bright and airy layout, including two generous double bedroom. The modern fully fitted kitchen and contemporary bathroom complement the property's stylish interiors, enhanced by wooden flooring, gas central heating, and ample built-in storage throughout.

Perfectly positioned near the lively amenities of Stroud Green and with excellent transport connections via Finsbury Park Station, this property offers the ideal balance of comfort, convenience, and tranquillity. Offered part - furnished and available from 10th of February.

Council Tax band: C

EPC Energy Efficiency Rating: C

EPC Environmental Impact Rating:

- Two Double Bedrooms
- Comprising 527 sq ft / 49 sq mt
- Fully Fitted Kitchen
- Double Glazed Windows
- Bright Reception / Kitchen Space
- Wooden Flooring
- Well - Maintained Equal Bedrooms
- Walking Distance to Finsbury Park and Crouch Hill Stations
- Offered Part - Furnished
- Available 10th of February
- Build In Storage





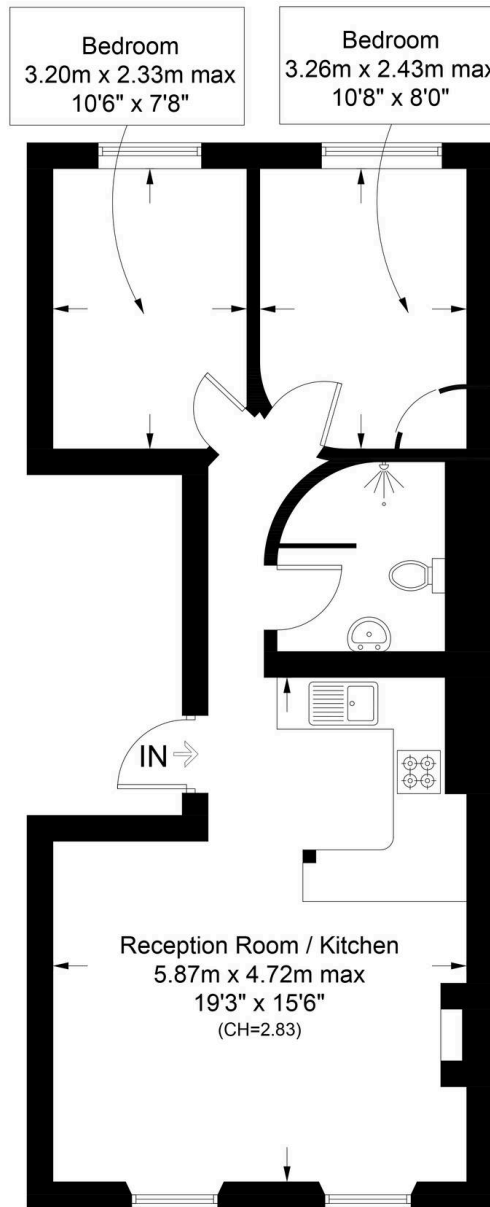




## Moray Road, N4

Approximate Gross Internal Area = 524 sq ft / 48.7 sq m

**DAVID  
ANDREW** | your  
most  
valuable  
asset



### First Floor

scan to book  
a viewing



**Certified  
Property  
Measurer**

This plan is for layout guidance only. Not drawn to scale unless stated. Windows and door openings are approximate. Whilst every care is taken in the preparation of this plan, please check all dimensions, shapes and compass bearings before making any decisions reliant upon them. (ID1096461)

**DAVID  
ANDREW** | your  
most  
valuable  
asset

has been exercised in the  
of these particulars,  
out the property must not be  
as representations of  
fact. Prospective applicants  
and rely upon their own  
id those of professional  
s. David Andrew Estates  
bility for any error contained  
in these particulars.

#### Archway Office

671 Holloway Road  
London, N19 5SE

T (0)20 7619 3750

#### Highbury Office

90 Highbury Park  
London, N5 2XE

T (0)20 7354 9111

#### Finsbury Park Office

167 Stroud Green Road  
London, N4 3PZ

T (0)20 7281 2000

#### Property Management Office

235 Blackstock Road  
London, N5 2LL

T (0)20 7354 9222



**safeagent**