



The Shaws Building, Broad Street, Nottingham  
£825 pcm





## The Shaws Building

Broad Street, Nottingham

Located on Broad Street, this spacious apartment is perfectly positioned in the heart of Nottingham City Centre, offering an excellent lifestyle with everything on your doorstep.

The property comprises a generously sized double bedroom with en-suite bathroom and built in storage, an additional WC with toilet and wash basin located in the hallway, and a large open plan kitchen and living/dining area. The kitchen is fully fitted with appliances and benefits from a convenient breakfast bar. With high ceilings, neutral décor and well-proportioned rooms throughout, the apartment feels bright, airy and spacious.

Step outside and you'll find an array of shops, independent cafés, restaurants and bars that Nottingham is renowned for. Nottingham Train Station, the Motorpoint Arena, Broadway Cinema, bus routes in and out of the city, and the historic Nottingham Castle are all within easy walking distance.

Available now and offered unfurnished – enquire today to arrange a viewing.





**En-suite**

9' 5" x 5' 6" (2.88m x 1.67m)

Spacious and neutrally decorated en-suite bathroom finished with white wall tiles and grey floor tiles. The room is fitted with a shower over bath, wash basin, mirror with light, towel rail and toilet, providing a clean, modern and practical space.

**Bedroom**

20' 5" x 10' 0" (6.23m x 3.05m)

Bright and spacious bedroom decorated with white walls and neutral-coloured carpets. The room benefits from a fitted window blind and two built-in storage cupboards, offering plenty of practical storage while maintaining a light and airy feel.

**WC**

6' 11" x 5' 6" (2.12m x 1.68m)

This apartment benefits from a WC with mirror, sink and toilet.

**Kitchen/Lounge/Diner**

28' 0" x 13' 11" (8.54m x 4.23m)

The apartment features a bright and spacious open plan kitchen, living and dining area, finished with white walls throughout, laminate flooring and neutral stone-effect tiles to the kitchen area. The kitchen is well equipped with an electric hob, oven, extractor fan, washing machine, dishwasher and fridge/freezer, along with a convenient breakfast bar, along with a round glass table and two dining chairs. There is ample worktop and storage space, making the area both practical and ideal for everyday living and entertaining.

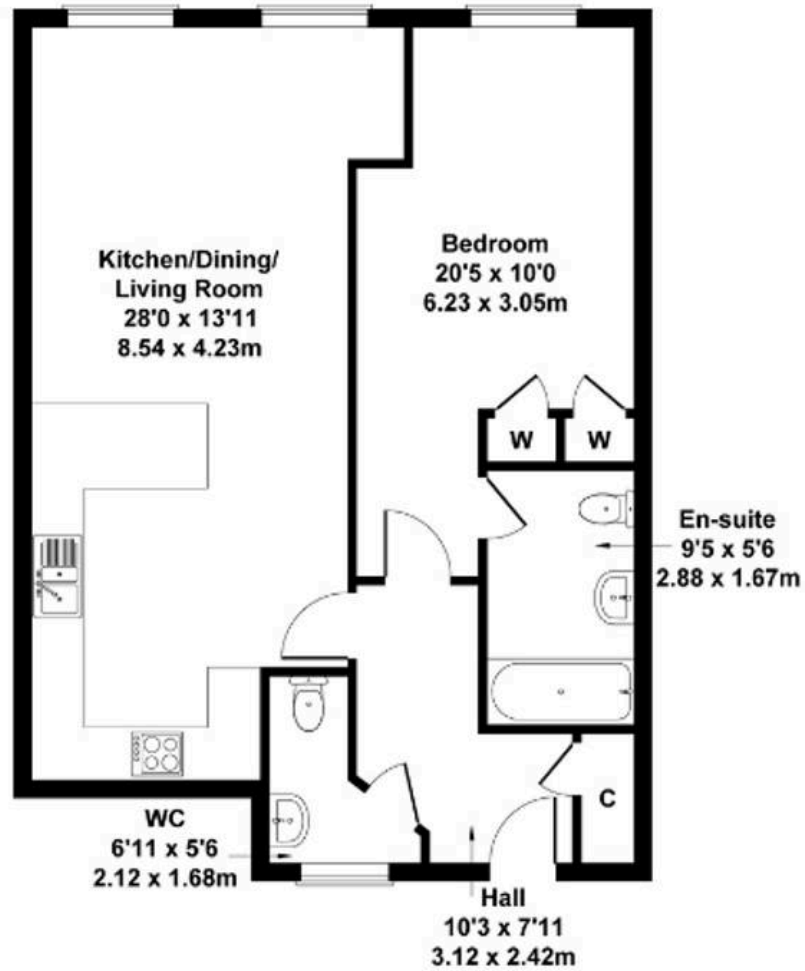








Approximate Gross Internal Area  
667 sq ft - 62 sq m



Not to Scale. Produced by The Plan Portal 2025  
For Illustrative Purposes Only.





## Comfort Estates

Comfort Estates, 47 Derby Road - NG1 5AW

0115 9338997 • [info@comfortestates.co.uk](mailto:info@comfortestates.co.uk) • [www.comfortestates.co.uk](http://www.comfortestates.co.uk)