



5 Barton Way

High Wycombe, High Wycombe

- Semi-Detached House In Cul-De-Sac Location
- Lounge/Dining Room, Kitchen
- Three Bedrooms, Bathroom
- Gas C/H, Double Glazing
- Driveway Parking, Gardens
- No Onward Chain
- Close To Totteridge Common

Situated just under one and a half miles from the town centre in a tucked away cul-de-sac location. The property is situated close to local shops and a regular bus service into the town centre runs close by. High Wycombe town centre offers multiple shopping facilities as well as having a mainline railway station with a regular service to both London and Birmingham. There are a number of schools close by including the boys Royal Grammar School. Council Tax band: C

Tenure: Freehold

EPC Energy Efficiency Rating: C

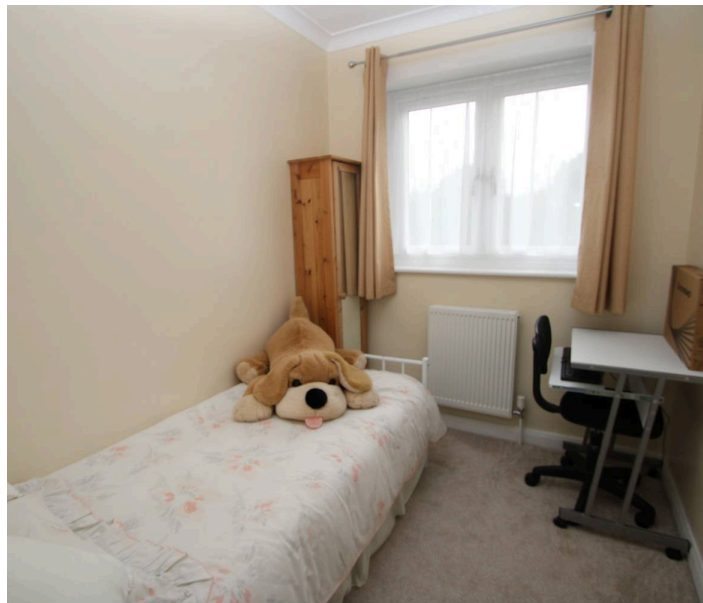
EPC Environmental Impact Rating: C



5 Barton Way

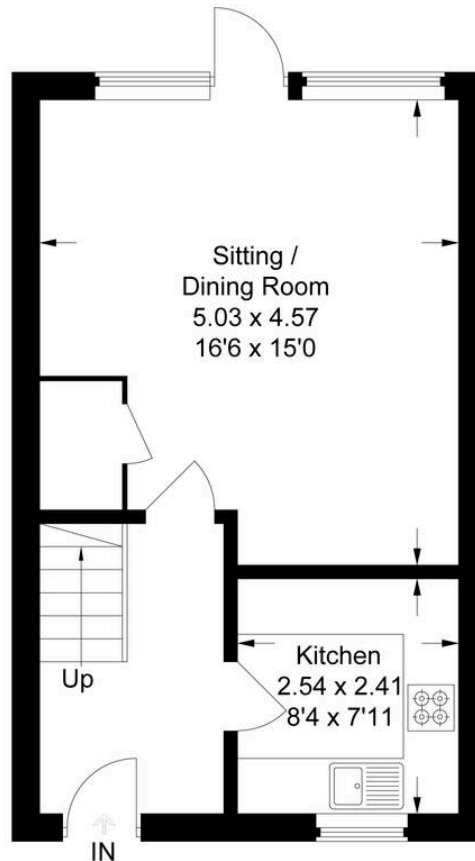
High Wycombe, High Wycombe

A modern semi-detached home situated in a tucked away cul-de-sac close to Totteridge Common and within easy of both local and town centre amenities. Accommodation comprising: entrance hall, a good size lounge/dining room with access to the rear garden, separate kitchen, landing, three bedrooms and white three piece bathroom suite. To the outside at the front a driveway provides off-road parking for two vehicles with gated access to the rear garden which has a decked terrace that extends to lawn.

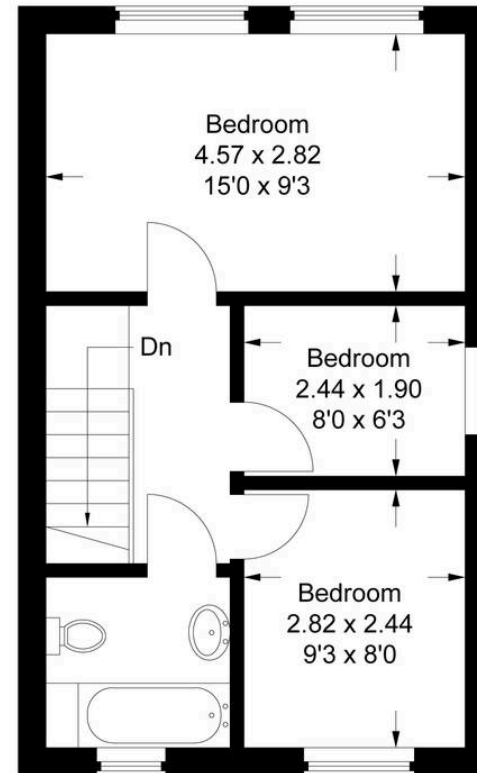


5 Barton Way

Approximate Gross Internal Area
Ground Floor = 35.5 sq m / 382 sq ft
First Floor = 35.3 sq m / 380 sq ft
Total = 70.8 sq m / 762 sq ft



Ground Floor



First Floor

This plan is for layout guidance only. Not drawn to scale unless stated. Windows and door openings are approximate. Whilst every care is taken in the preparation of this plan, please check all dimensions, shapes and compass bearings before making any decisions reliant upon them.

© CJ Property Marketing Ltd

The Wye Partnership High Wycombe

Wye House, 15 Crendon Street, High Wycombe - HP13 6LE

01494 451300 • wylcombe@wyeres.co.uk • www.wyeres.co.uk/

