

FINDING YOU A HOME  
SINCE 1972  
B



5 White Houses, Noirmont Lane, St. Brelade  
£1,400,000

**BROADLANDS**  
FINDING YOU A HOME SINCE 1972



# 5 White Houses, Noirmont Lane

St. Brelade, Jersey

A rare opportunity to purchase your dream home situated at the end of a private close with a breathtaking outlook over Ouaisne to St Brelade's Bay. Designed to make the most of the views with floor to ceiling folding doors downstairs and big picture windows upstairs. Presented in walk-in condition, the accomodation comprises entrance hall, living room, dining room, fully fitted kitchen, office, three double bedrooms, bathroom and shower room. The house also benefits from a large garage and parking for two cars, plus external utility room. The open plan living and dining rooms provide plenty of space for various layouts and you'll spend hours gazing out of the floor to ceiling bi-fold doors at the beautiful view. The two raised sun terraces are ideal places to lap up the all-day sun and dine watching the magnificent sunsets. There are plenty of interesting walks in the area and if you need supplies on the way home, Woodbine Stores is conveniently placed close by. Call Don on 07829 917172 to view.\nProperty Overview -

- Sole agent - contact Don 07829 917172 / don@broadlandsjersey.com
- Quiet close
- Garage and parking
- All day sun through to spectacular sunsets
- Detached, contemporary family home
- Two bath/shower rooms
- Three bedrooms
- Three reception rooms
- Two sun terraces
- Magnificent sea views





### Outside

Two raised terraces - perfect for relaxing and dining - capture sun all day until sunset. Utility Room with washing and drying machines. Large garage providing plenty of parking and storage space. Parking area for two vehicles to front.

### Services

All mains excluding gas. OFCH. Wired for satellite and fibre.

### Living

Spacious entrance hall with wooden flooring and understairs cupboard. Doors to main reception rooms and kitchen. Stairs to first floor. Open plan living and dining rooms with bifold doors to terrace and functional fireplace. Door to office and downstairs shower room. Fully fitted kitchen with tiled floor and splashbacks. Intergrated appliances include Rangemaster double oven, extractor, fridge/freezer and dishwasher. Granite worktops.

### Sleeping

Landing with doors to three double bedrooms - two with sweeping sea views. House bathroom with four piece suite comprising bath, shower in cubicle, basin and WC. Second shower room with shower, basin and WC. Hatch to loft - not floored - but useful storage space.

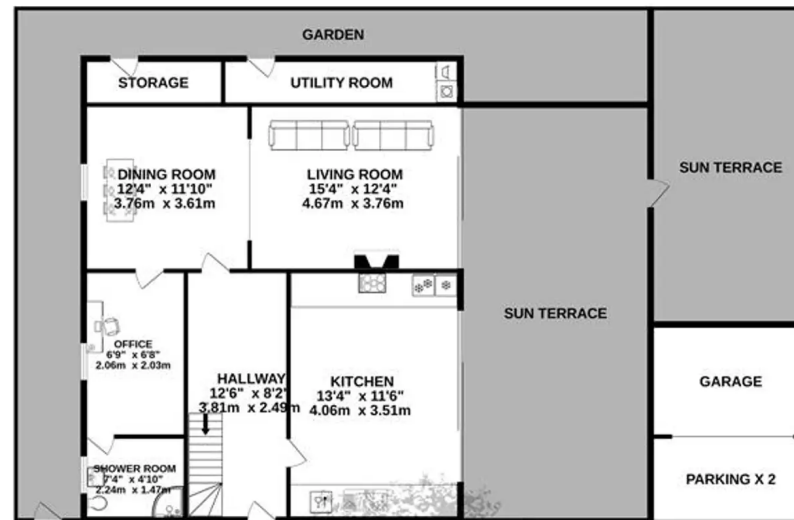




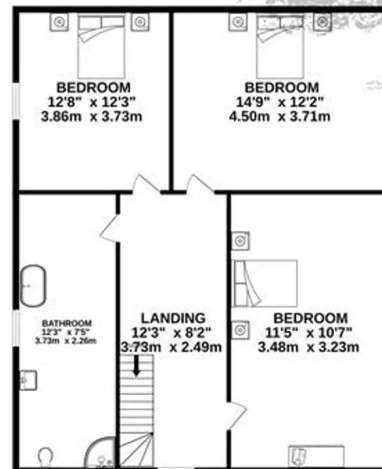




GROUND FLOOR  
1621 sq.ft. (150.6 sq.m.) approx.



1ST FLOOR  
1379 sq.ft. (128.1 sq.m.) approx.



TOTAL FLOOR AREA : 1376sq.ft. (127.8 sq.m.) approx.

Whilst every attempt has been made to ensure the accuracy of the floorplan contained here, measurements of doors, windows, rooms and any other items are approximate and no responsibility is taken for any error, omission or mis-statement. This plan is for illustrative purposes only and should be used as such by any prospective purchaser. The services, systems and appliances shown have not been tested and no guarantee as to their operability or efficiency can be given.  
Made with Metropix ©2022





## Broadlands

Broadlands Estates, Library Place - JE2 3NL

01534 880 770 • [enquiries@broadlandsjersey.com](mailto:enquiries@broadlandsjersey.com) • [www.broadlandsjersey.com/](http://www.broadlandsjersey.com/)

# BROADLANDS

FINDING YOU A HOME SINCE 1972