



FINDING YOU A HOME
SINCE 1972
B

Rival House, Albert Road, St. Saviour
£625,000

BROADLANDS
FINDING YOU A HOME SINCE 1972

Rival House, Albert Road

St. Saviour, Jersey

Heading east along Longueville road take the 1st right in front of the Spa pool shop and the property is on the left.

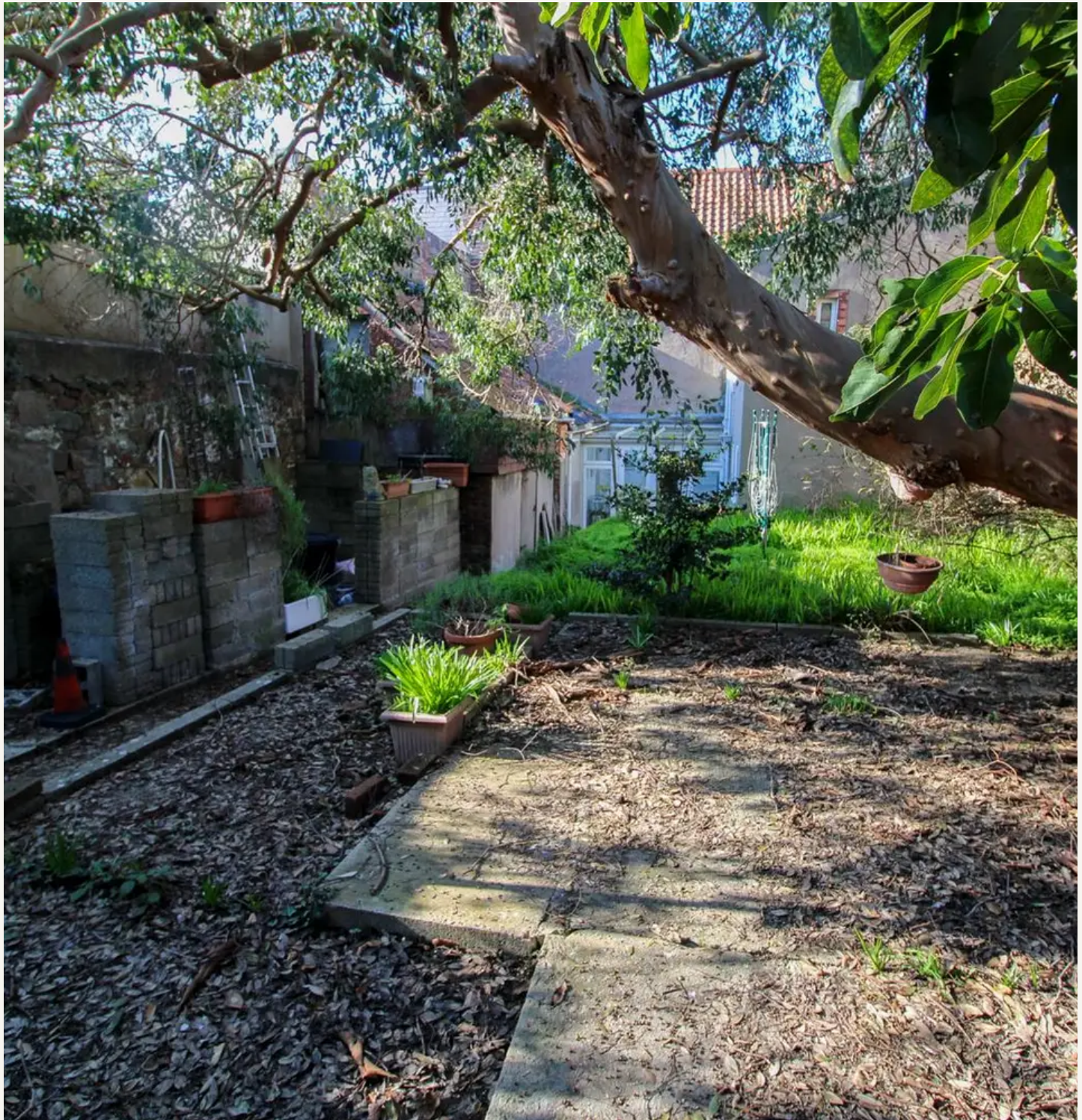
- Perfect opportunity to create a large family home
- Terraced 5 bedroom house
- Substantial walled in rear garden
- Situated on a quiet one way street in Georgetown and close to local convenience stores and bus routes
- Sole agent
- Off road parking for 2 cars
- Please contact Tony on 07797726677 or tony@broadlandsjersey.com



Rival House, Albert Road

St. Saviour, Jersey

Briefly comprising of 2 receptions and separate kitchen with a breakfast room, a covered sunroom/conservatory and downstairs bathroom. On the 1st floor there are two large double bedrooms with the main bedroom having an en suite bathroom, a further single bedroom completes the 1st floor. The top floor has two further bedrooms. There are two off road parking spaces at the front of the property, at the rear of the property there is a substantial walled in garden which provides scope to extend the property (subject to planning). This is the perfect opportunity to create a family home as the property is in need of modernisation throughout. Contact Tony on 07797726677 to arrange an early viewing.





Living

Large living/sitting room and separate formal dining room. Separate kitchen with breakfast room. Open plan sunroom/conservatory. Downstairs bathroom, WC and utility room.

Sleeping

Two large double bedrooms on the 1st floor with the main bedroom having an en suite bathroom. A good sized single bedroom/study above the kitchen. Two further bedrooms on the top floor.

Outside

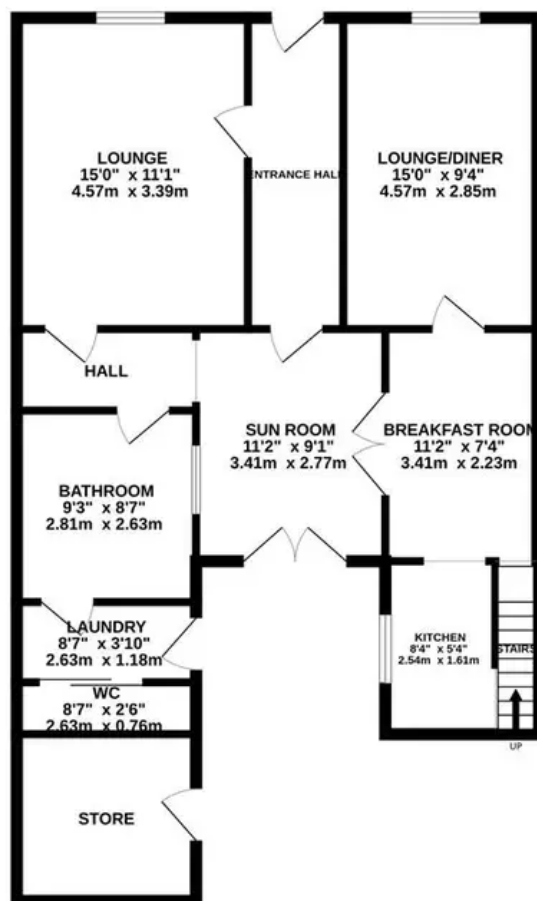
Off road parking for two cars in front of the house. To the rear is a substantial walled garden with storage sheds and ample room to extend the property (Subject to planning).

Services

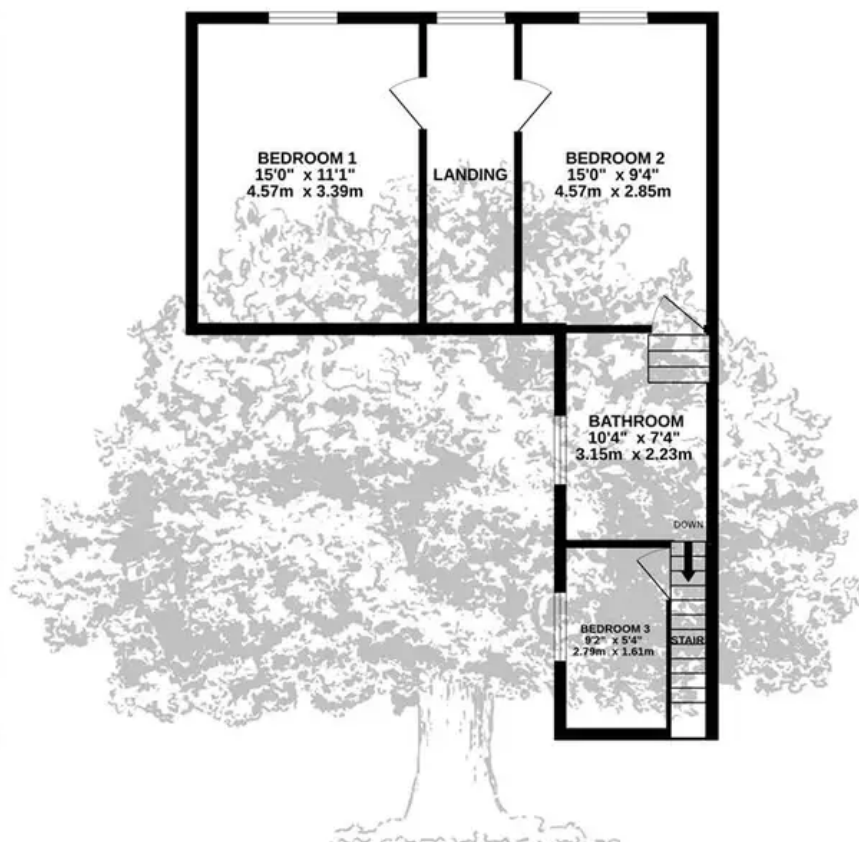
All mains. Gas central heating. Fibre Broadband.



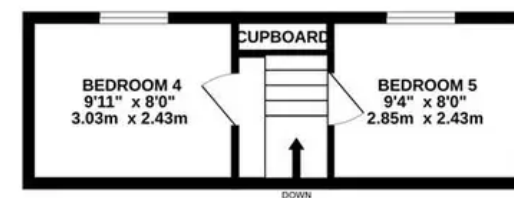
GROUND FLOOR
857 sq.ft. (79.7 sq.m.) approx.



1ST FLOOR
518 sq.ft. (48.1 sq.m.) approx.



2ND FLOOR
190 sq.ft. (17.7 sq.m.) approx.



TOTAL FLOOR AREA : 1566 sq.ft. (145.5 sq.m.) approx.

Whilst every attempt has been made to ensure the accuracy of the floorplan contained here, measurements of doors, windows, rooms and any other items are approximate and no responsibility is taken for any error, omission or mis-statement. This plan is for illustrative purposes only and should be used as such by any prospective purchaser. The services, systems and appliances shown have not been tested and no guarantee as to their operability or efficiency can be given.

Made with Metropix ©2023



Broadlands

Broadlands Estates, Library Place - JE2 3NL

01534 880 770 • enquiries@broadlandsjersey.com • www.broadlandsjersey.com/

BROADLANDS

FINDING YOU A HOME SINCE 1972