



Kinver House, Elthorne Road – N4 4AS

**DAVID  
ANDREW**

your  
most  
valuable  
asset



Positioned within a well-regarded new build development, this charming one-bedroom apartment presents an excellent opportunity for contemporary urban living.

The apartment features a spacious double bedroom and benefits from a bright, airy atmosphere throughout. The open-plan living area flows seamlessly onto a private balcony, providing a perfect spot for relaxation. Residents also enjoy the convenience of lift access and secure bike storage. The modern finish and clean, neutral décor make it move-in ready while offering flexibility for personal touches.

Located just a short walk from Archway Station (Northern Line), the property allows for quick and easy access to central London. The surrounding area offers a lively and diverse mix of independent cafes, restaurants, and local shops. For outdoor recreation, residents are close to green spaces such as Whittington Park and the expansive Hampstead Heath. This sought-after location delivers the perfect balance of convenience, culture, and calm. Offered Part Furnished. Available from 31st January.

Council Tax band: D

EPC Energy Efficiency Rating: B

EPC Environmental Impact Rating:

- One Bedroom Apartment
- Private Balcony
- Comprising 42 sq mt / 452 sq ft
- Fully Fitted Kitchen
- Wooden Flooring Throughout
- Bike Storage
- Walking Distance To Archway & Upper Holloway Stations
- Offered Part-Furnished
- Available 31st January



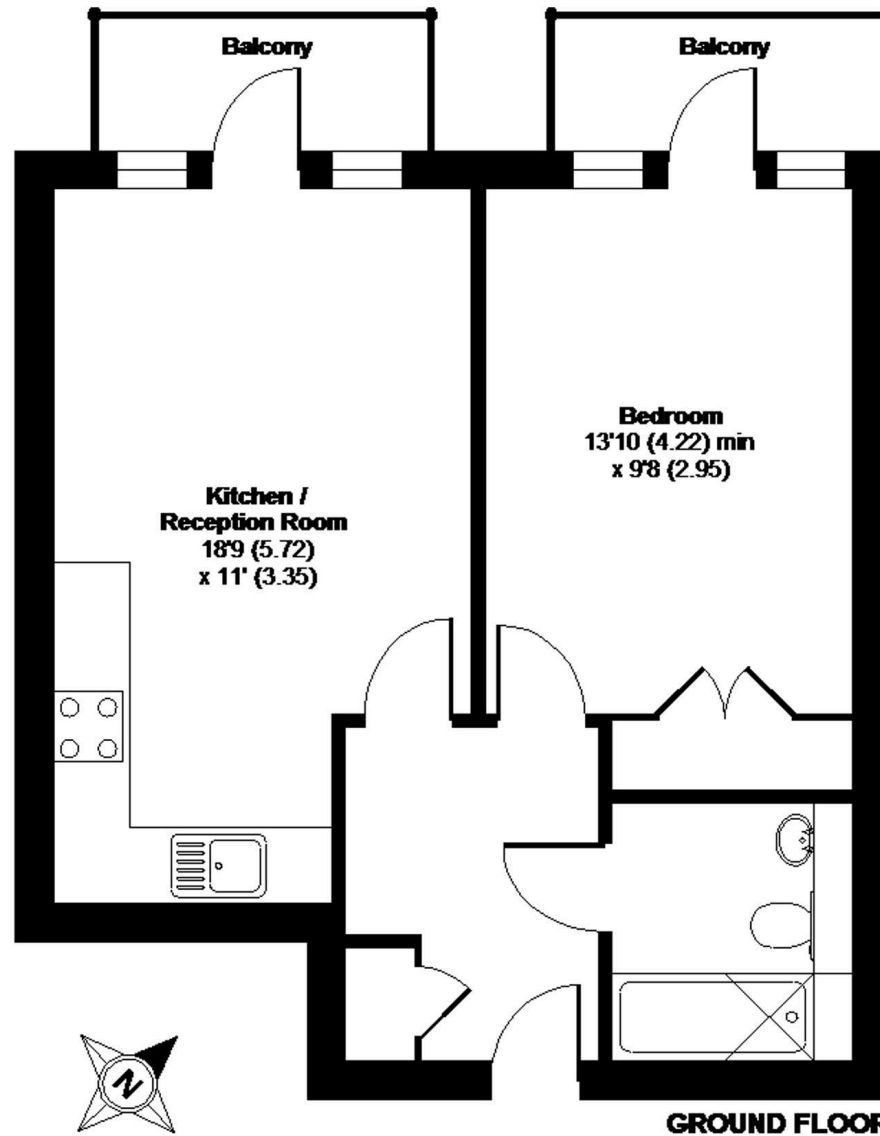




# Kinver House, Elthorne Road, London, N19

APPROX. GROSS INTERNAL FLOOR AREA 451 SQ FT 41.8 SQ METRES

**DAVID  
ANDREW** | your  
most  
valuable  
asset



## Archway Office

671 Holloway Road  
London, N19 5SE

T (0)20 7619 3750

## Highbury Office

90 Highbury Park  
London, N5 2XE

T (0)20 7354 9111

## Finsbury Park Office

167 Stroud Green Road  
London, N4 3PZ

T (0)20 7281 2000

## Property Management Office

235 Blackstock Road  
London, N5 2LL

T (0)20 7354 9222

scan to book  
a viewing



Whilst every attempt has been made to ensure the accuracy of the floor plan contained here, measurements of doors, windows and rooms are approximate and no responsibility is taken for any error, omission or misstatement. These plans are for representation purposes only as defined by RICS Code of Measuring Practice and should be used as such by any prospective purchaser. Specifically no guarantee is given on the total square footage of the property if quoted on this plan. Any figure given is for initial guidance only and should not be relied on as a basis of valuation.

Copyright nichecom.co.uk 2016 Produced for David Andrew REF : 97638

note:  
are has been exercised in the  
on of these particulars,  
its about the property must not be  
upon as representations of  
its or fact. Prospective applicants  
ake and rely upon their own  
and those of professional  
tatives. David Andrew Estates  
no liability for any error contained  
in these particulars.



safeagent