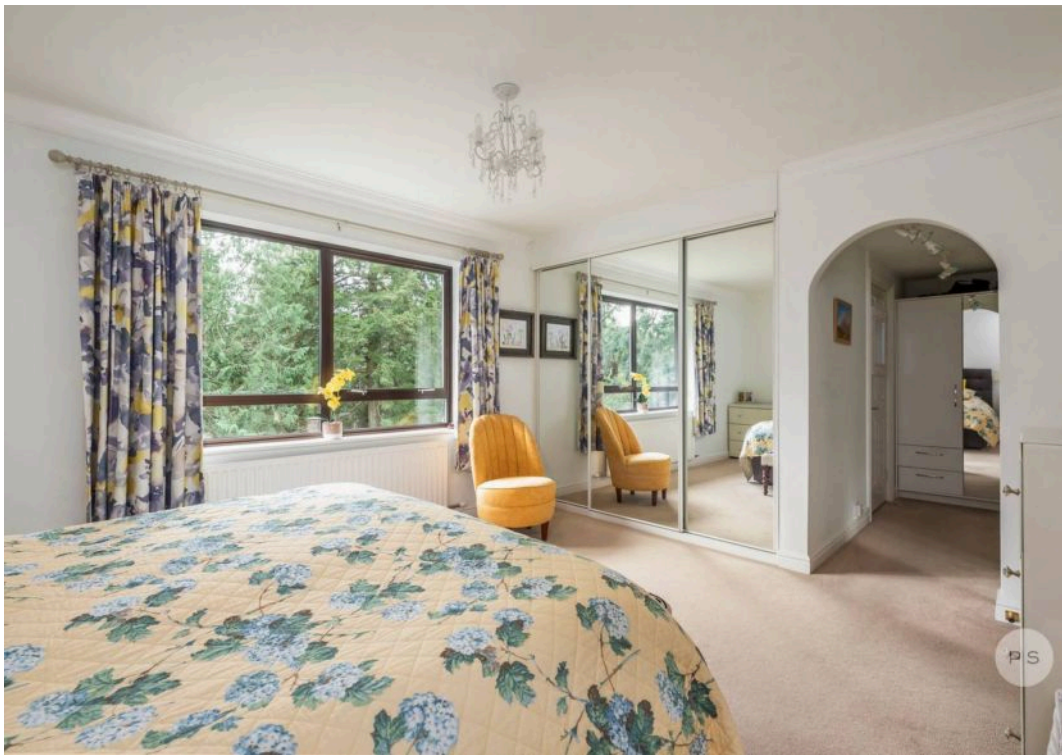


PS

Flat 7, Foxdene, 5 Balcombe Road, Branksome Park, Poole - BH13 6DX
£585,000

PS



Flat 7, Foxdene

Set within an exclusive and beautifully maintained development in the heart of Branksome Park, this exceptional top-floor apartment, upgraded by the present owners in recent years, offers 1668 sq.ft of spacious, light-filled living. Designed with both comfort and sophistication in mind, the property combines generous proportions with a superb layout ideal for modern lifestyles.

- Exclusive top floor apartment in a beautifully maintained Branksome Park development
- Spacious layout extending to approximately 1,668 sq.ft.
- Light-filled 17' lounge flowing into a 13' dining room, ideal for entertaining
- Modern, well-equipped kitchen with excellent storage and integrated appliances
- Expansive master suite with dressing area and private en-suite bathroom
- Two additional bedrooms offering flexibility for guests or a home office
- South-facing balcony with sunny aspect and views over landscaped grounds
- Lift access, generous built-in storage, and double garage included
- Peaceful, tree-lined setting close to Blue Flag beaches and village centres
- Convenient access to London Waterloo, Poole Harbour ferries, and local airports
- EPC Rating: C
- Council Tax Band F £3264
- Share of Freehold



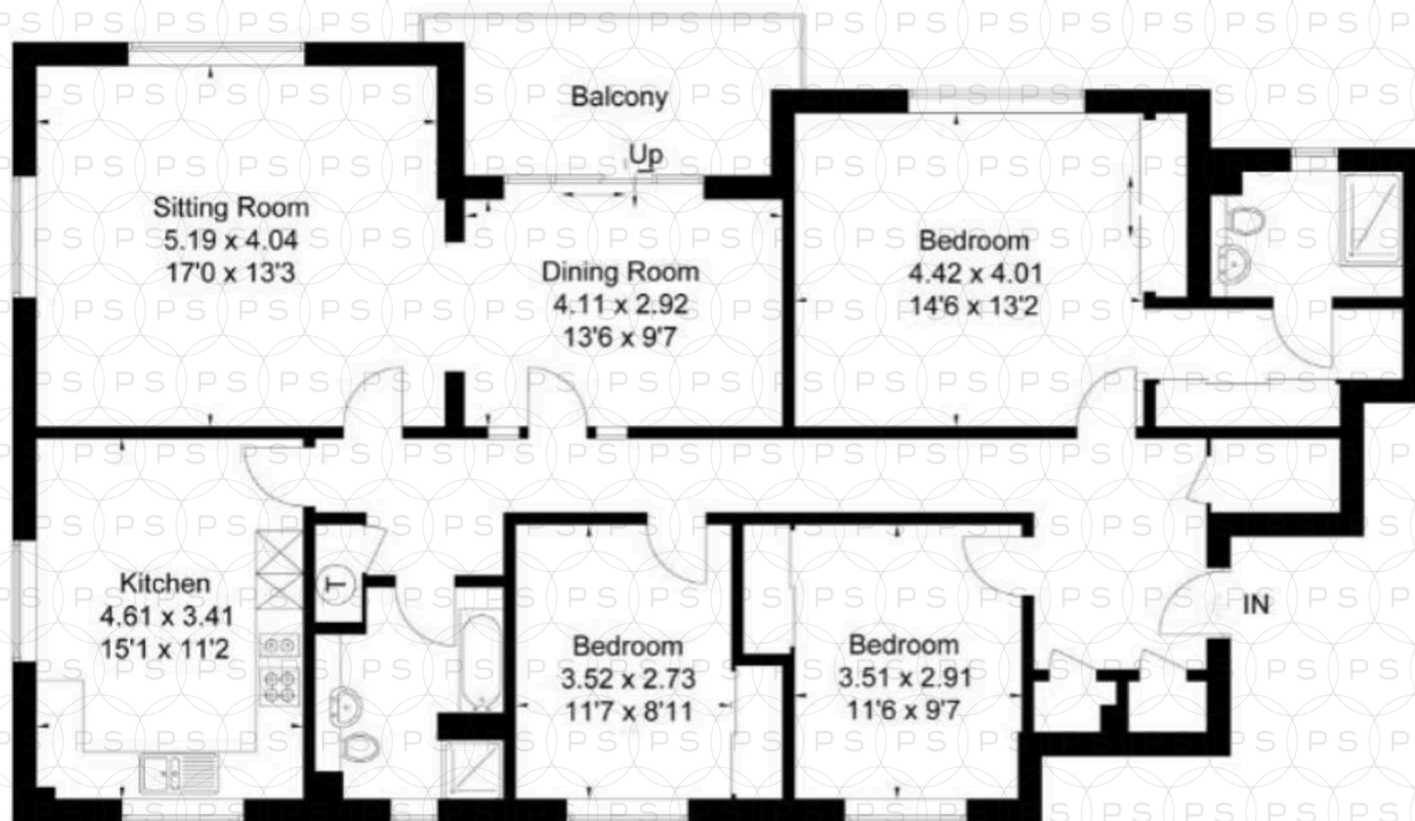
The welcoming 17' lounge flows seamlessly into a 13' dining room, creating a perfect setting for both relaxing and entertaining. The **modern, well-appointed kitchen** features excellent storage and integrated appliances and breakfast bar, complementing the home's stylish practicality. The **expansive master suite** enjoys a private **dressing area** and luxury en-suite bathroom, while two further bedrooms both with fitted wardrobes, provide flexibility for guests or home office use. A highlight of the property is the **south-facing balcony**, offering a sunny aspect and tranquil views across the mature landscaped grounds.

Additional benefits include **lift access**, **ample built-in storage**, a **double garage**, and a **share of the freehold**, ensuring both convenience and peace of mind.

Location

Branksome Park is one of the South Coast's most sought-after residential areas, renowned for its tree-lined avenues and proximity to award-winning Blue Flag beaches. This peaceful yet well-connected location is just moments from Branksome Chine, Sandbanks Peninsula, and the vibrant village centres of Westbourne and Canford Cliffs, where a range of boutique shops, cafés, and restaurants await. Positioned between Poole and Bournemouth town centres, the property benefits from excellent transport links, including Bournemouth mainline station with direct services to London Waterloo, easy access to the A338, and close proximity to Bournemouth and Southampton airports. The area also offers ferry services from Poole Harbour to the Channel Islands and mainland Europe – perfect for both leisure and travel convenience. You can include any text here. The text can be modified upon generating your brochure.





Approximate Floor Area = 155.0 sq m / 1668 sq ft



Philippa Sole Ltd

Philippa Sole 3A Springfield Road, Ashley Cross - BH14 0LG

01202 747999 • enquiries@philippasole.co.uk • www.philippasole.co.uk

All statements in these particulars are made without responsibility on the part of Philippa Sole Ltd or the vendor. Neither Philippa Sole Ltd nor anyone in its employment or acting on its behalf has the authority to make any representation or warranty in relation to this property, detailed survey or tested services and fittings. Room sizes are approximate.