




Holdens
ESTATE AGENTS

398 Leyland Road, Lostock Hall

Offers in Region of **£169,950**


Holdens
ESTATE AGENTS



398 Leyland Road

Lostock Hall, Preston

Well-presented 3-bed semi-detached in Lostock Hall, Preston. Spacious living, fitted wardrobes, driveway, gardens, near amenities, schools and transport. Leasehold. Council Tax Band C. EPC Rating C.

Council Tax band: B

Tenure: Leasehold

EPC Energy Efficiency Rating: C

EPC Environmental Impact Rating:

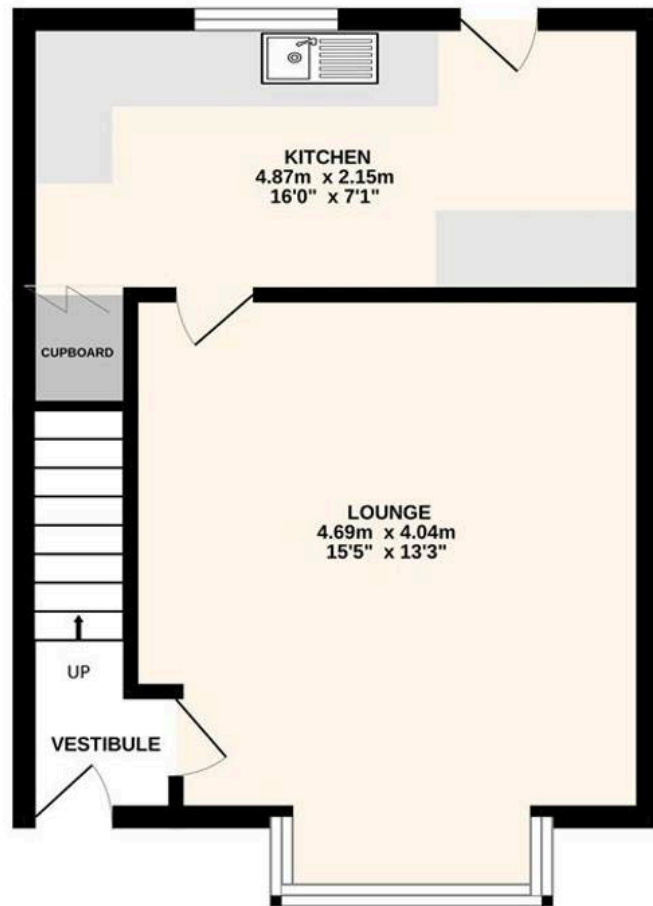
- Semi Detached Property
- Available With No Onward Chain
- Spacious Living
- Modern Kitchen
- Three Bedrooms
- Well appointed Three-Piece Bathroom
- Close To Local Amenities
- Front & Rear Gardens
- Council Tax Band B
- Leasehold



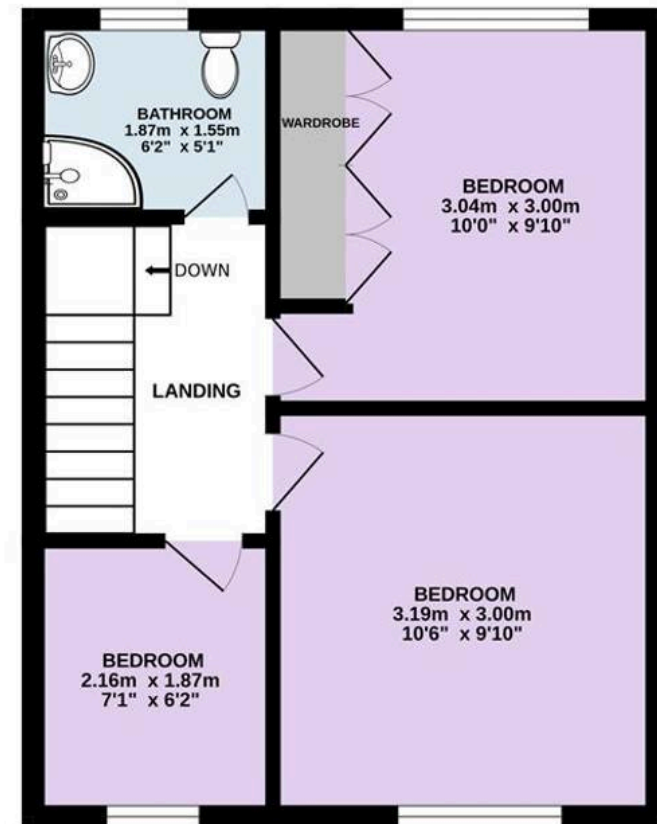




GROUND FLOOR
31.6 sq.m. (340 sq.ft.) approx.



1ST FLOOR
30.4 sq.m. (327 sq.ft.) approx.



TOTAL FLOOR AREA : 62.0 sq.m. (667 sq.ft.) approx.

Every attempt is made to ensure accuracy, however all measurements are approximate. This plan is for illustrative purposes only and is not to scale.
Made with Metropix ©2025



Holdens Lostock Hall

Holdens Estate Agents, 6 Watkin Lane - PR5 5RD

01772 698888

lostockhall@holdens.co.uk

www.holdens.co.uk/

Disclaimer: All information such as plans, dimensions, and details about the property's condition or suitability is provided in good faith and believed to be accurate, but should not be relied upon without independent verification. Buyers or tenants must carry out their own checks. Appliances and systems (e.g. electrics, plumbing, heating) haven't been tested. It's strongly advised to get professional inspections before making any commitments. No employee or agent of Holdens Estate Agents is authorised to make promises or guarantees about the property. These details are for general guidance only and do not form part of any contract. If the property is leasehold, buyers should carefully review the lease terms, including length, rent, deposit, and any specific conditions. All