




Holdens
ESTATE AGENTS

28 Central Park Road, Lostock Hall
£172,000


Holdens
ESTATE AGENTS



28 Central Park Road

Lostock Hall, Preston

80% Open Market Value under South Ribble Discounted Home Scheme. 3 Bed Terrace in immaculate condition with low-maintenance gardens. Subject to Criteria, this property is ready and waiting for you!

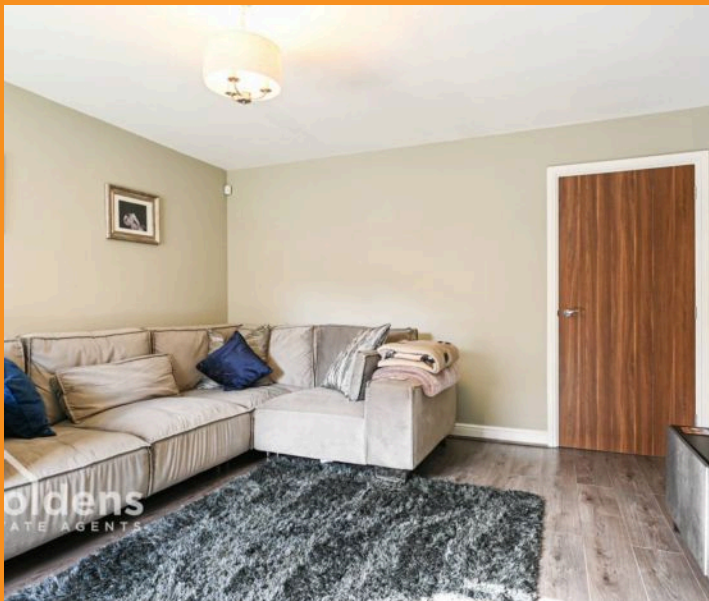
Council Tax band: C

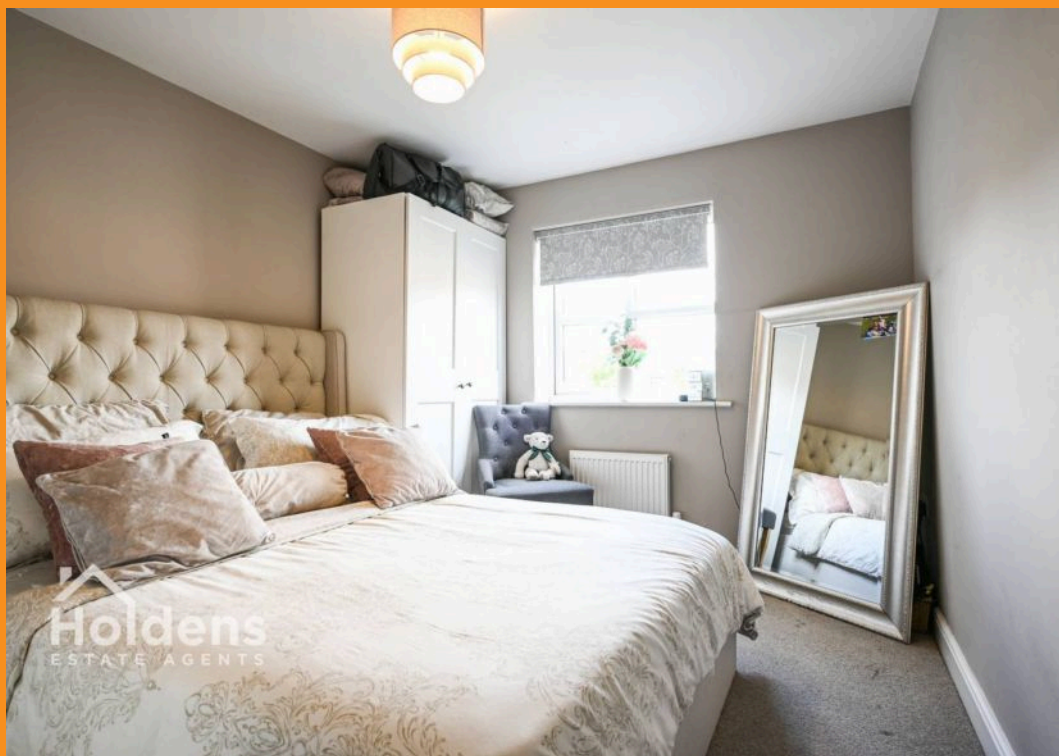
Tenure: Leasehold

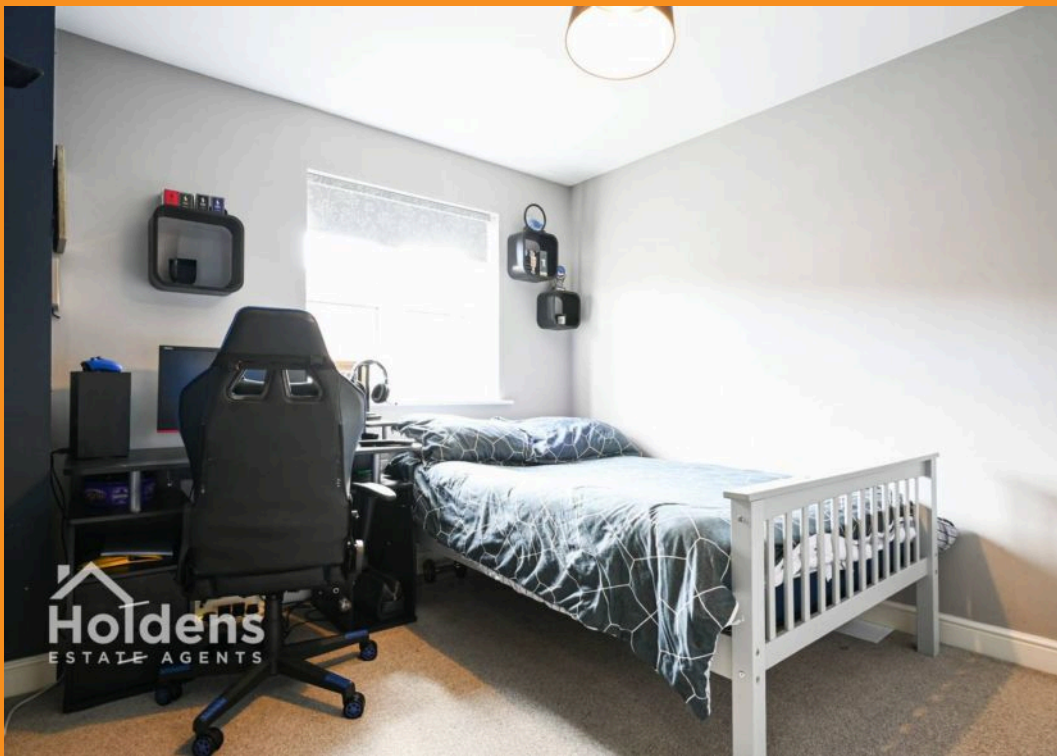
EPC Energy Efficiency Rating: B

EPC Environmental Impact Rating: B

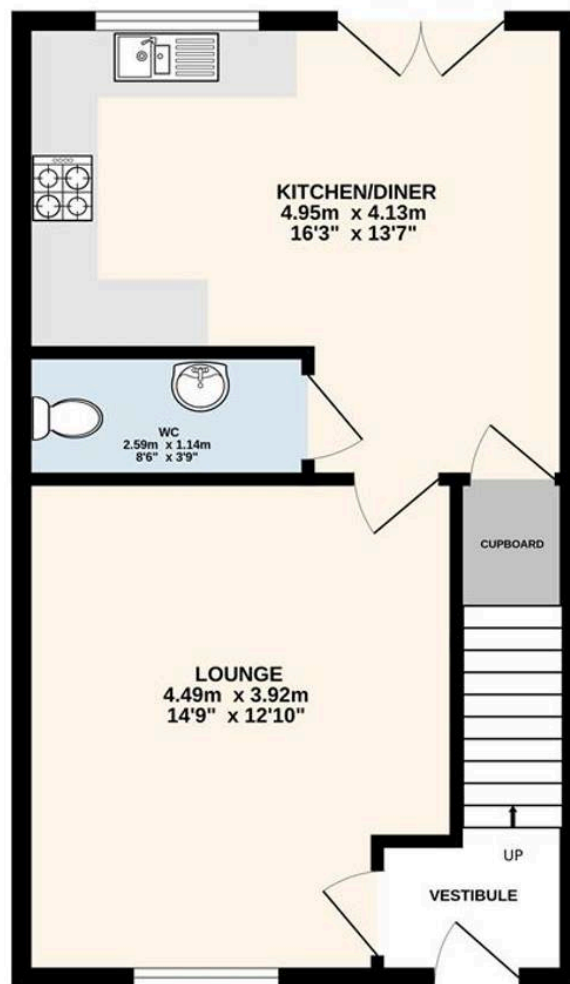
- Available under South Ribble Discounted Home Scheme
- Beautifully Presented Mid Terrace
- Spacious Lounge
- Modern Kitchen with Space for White Goods adjacent to a W/C
- Two Double Bedrooms with a Convenient Single
- Family Bathroom with an En-Suite to Master
- Perfectly Positioned on a Popular Development
- EPC Rating B
- Council Tax Band C
- Leasehold



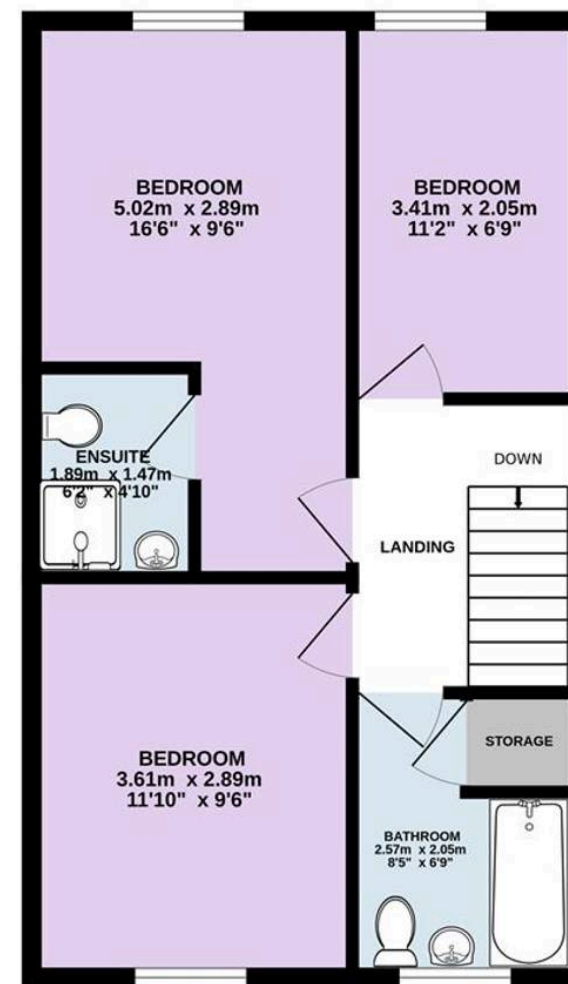




GROUND FLOOR
42.7 sq.m. (459 sq.ft.) approx.



1ST FLOOR
42.7 sq.m. (459 sq.ft.) approx.



TOTAL FLOOR AREA : 85.3 sq.m. (918 sq.ft.) approx.

Every attempt is made to ensure accuracy, however all measurements are approximate. This plan is for illustrative purposes only and is not to scale.
Made with Metropix ©2025



Holdens Lostock Hall

Holdens Estate Agents, 6 Watkin Lane - PR5 5RD

01772 698888

lostockhall@holdens.co.uk

www.holdens.co.uk/

Disclaimer: All information such as plans, dimensions, and details about the property's condition or suitability is provided in good faith and believed to be accurate, but should not be relied upon without independent verification. Buyers or tenants must carry out their own checks. Appliances and systems (e.g. electrics, plumbing, heating) haven't been tested. It's strongly advised to get professional inspections before making any commitments. No employee or agent of Holdens Estate Agents is authorised to make promises or guarantees about the property. These details are for general guidance only and do not form part of any contract. If the property is leasehold, buyers should carefully review the lease terms, including length, rent, deposit, and any specific conditions. All