



**139 Spectrum, Block 3, Gloucester Street, St Helier**  
**£199,000**

**BROADLANDS**  
FINDING YOU A HOME SINCE 1972

# 139 Spectrum, Block 3, Gloucester Street

St Helier, Jersey

- Purpose built apartment
- Open plan living area/kitchen
- One double bedroom
- House bathroom
- Great investment or step on the property ladder
- Centre of town
- Walk to work
- Sole agent
- Call Joanna on 07797887751 / [joanna@broadlandsjersey.com](mailto:joanna@broadlandsjersey.com)



## 139 Spectrum, Block 3, Gloucester Street

St Helier, Jersey

Located in the heart of St Helier town centre, this purpose built one bedroom apartment offers a fantastic opportunity for investment or as a first step on the property ladder. The entrance hall opens onto the open plan living area seamlessly combining the kitchen. The generously proportioned double bedroom is complemented by a house bathroom.



**Living**

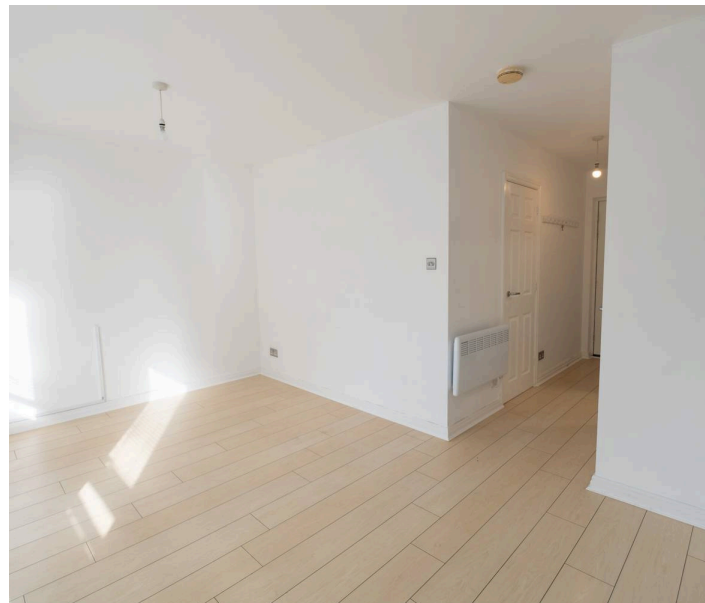
Entrance hall opening onto the open plan living area/kitchen.  
Utility cupboard.

**Sleeping**

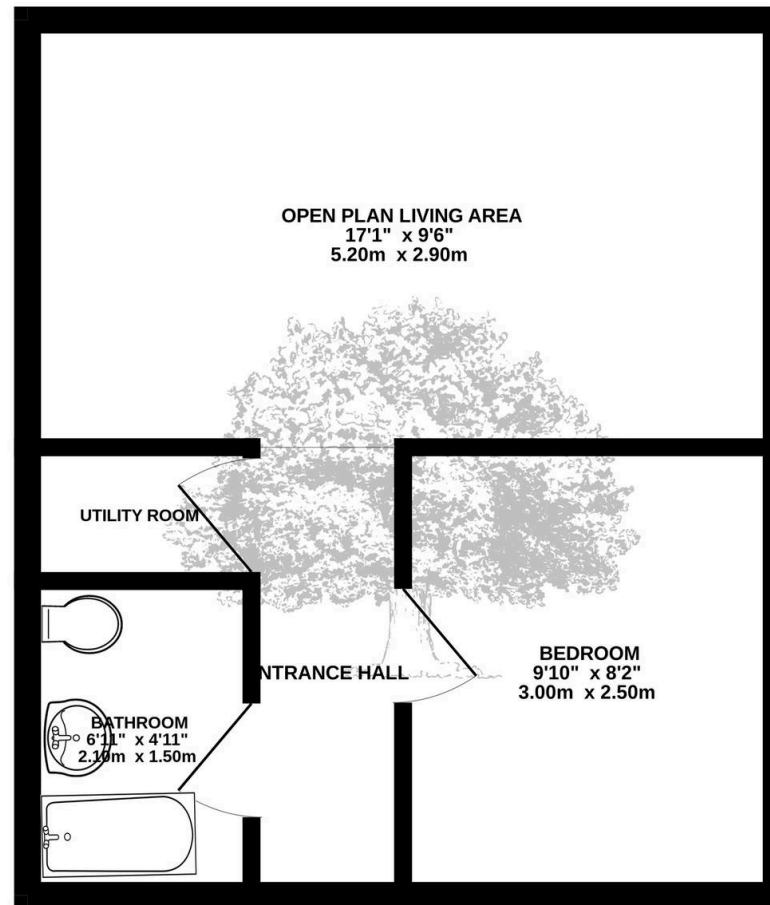
Double bedroom and house bathroom.

**Services**

All mains, drains and water. Electric heating, service charge  
TBA.



GROUND FLOOR  
315 sq.ft. (29.3 sq.m.) approx.



TOTAL FLOOR AREA: 315 sq.ft. (29.3 sq.m.) approx.

Whilst every attempt has been made to ensure the accuracy of the floorplan contained here, measurements of doors, windows, rooms and any other items are approximate and no responsibility is taken for any error, omission or mis-statement. This plan is for illustrative purposes only and should be used as such by any prospective purchaser. The services, systems and appliances shown have not been tested and no guarantee as to their operability or efficiency can be given.  
Made with Metropix ©2025



## Broadlands

Broadlands Estates, Library Place - JE2 3NL

01534 880770 • [enquiries@broadlandsjersey.com](mailto:enquiries@broadlandsjersey.com) • [www.broadlandsjersey.com/](http://www.broadlandsjersey.com/)

# BROADLANDS

FINDING YOU A HOME SINCE 1972