



16 The Nurses House Adams Walk, Midhurst, GU29 0FF

Offers in the Region of £650,000





16 The Nurses House, Adams Walk

Leasehold: 165yrs / EPC: B / Service Charge: £4,600pa

- Open-Plan Kitchen / Dining / Family Room
- Separate Formal Reception Room
- Impressive Private Roof Terrace
- Integrated Premium Kitchen Appliances
- Competitive Service Charges
- Two Allocated Parking Spaces
- No Onward Chain
- Indoor Swimming Pool for Residents Use
- Beautiful 165 Acre Estate
- Three Bedrooms / Two Bathrooms (One Ensuite)

Set within a magnificent 165 acre private estate in the heart of the South Downs National Park, this exceptional three bedroom apartment combines refined contemporary living with the timeless beauty of the English countryside. Enjoying a tranquil setting amidst rolling hills and landscaped parkland, the property offers residents a unique lifestyle enhanced by exclusive amenities, including an indoor swimming pool, gymnasium, and beautifully maintained communal gardens.

Upon entering, a gracious and welcoming hallway sets the tone, leading into a spacious open-plan kitchen, dining, and family room, the heart of the home. The impressive kitchen is a blend of style and functionality, featuring heritage grey cabinetry, elegant quartz stone worktops, and Siemens integrated appliances including an oven, microwave, ceramic hob, dishwasher, and fridge/freezer. The peninsula counter doubles as a convenient breakfast bar, perfect for casual dining or morning coffee. With generous space for a large dining table and comfortable seating, this light-filled room provides an ideal setting for family gatherings and entertaining.

16 The Nurses House, Adams Walk, Midhurst

A pair of glass panelled double doors open to an elegant double-aspect reception room, creating a natural flow between living spaces. Two sets of French doors extend the living area onto a superb private roof terrace, where south-facing views and abundant sunshine make it an idyllic spot for outdoor dining, relaxation, or summer entertaining.

The primary bedroom suite is a serene and stylish retreat, complete with built-in wardrobes and attractive views towards the historic Adams & Holden chapel. The second bedroom benefits from a delightful dual-aspect outlook over the charming courtyard gardens, while the third bedroom offers flexibility, ideal as a home office, guest room, or nursery.

Both the ensuite shower room and family bathroom are finished to an exceptional standard, showcasing premium sanitaryware and brassware from Vitra and Hansgrohe, complemented by porcelain tiling, large wall mirrors, and integrated shelving for elegant practicality. A separate utility room provides additional storage and convenience.

Throughout the apartment, oak-engineered wood flooring adds a warm sophistication, while luxurious carpets in the bedrooms enhance comfort.

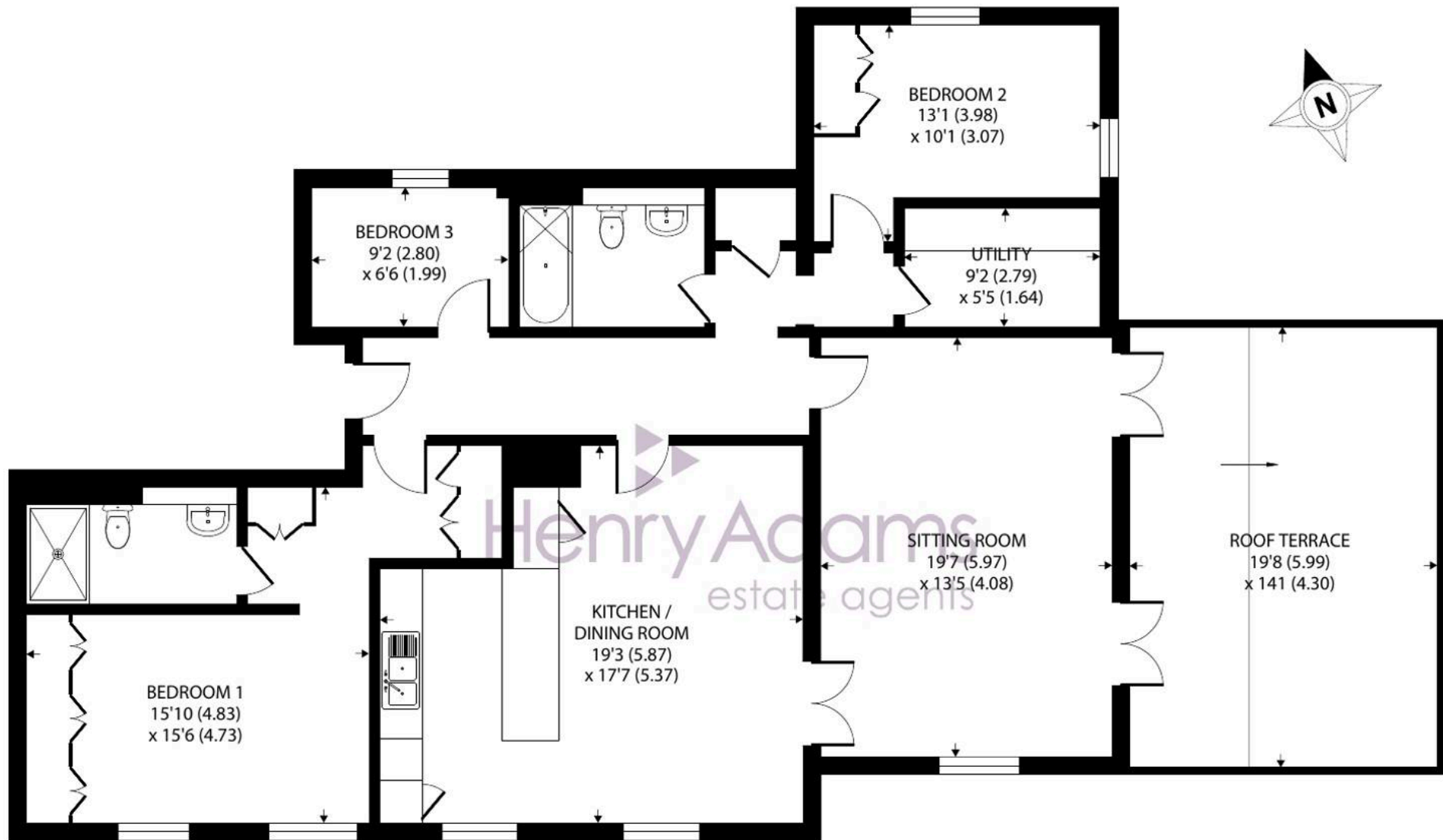
The property further benefits from two allocated parking spaces, one conveniently located outside The Nurses House and another within the secure underground car park.

Beyond the apartment, the impeccably landscaped estate grounds create a picturesque setting for leisurely walks and outdoor recreation. Residents can immerse themselves in nature while enjoying the sense of peace, privacy, and community that this exclusive development affords.

Whether relaxing on the sun drenched roof terrace, exploring the scenic trails of the South Downs, or enjoying the estate's private leisure facilities, this residence offers a rare blend of countryside serenity and refined modern living, the perfect balance of indoor elegance and outdoor charm.







FIRST FLOOR

Adams Walk, Midhurst, GU29 0FF

Approximate Area = 1357 sq ft / 126 sq m

For identification only - Not to scale



Floor plan produced in accordance with RICS Property Measurement 2nd Edition, Incorporating International Property Measurement Standards (IPMS2 Residential). © nichecom 2025. Produced for Henry Adams. REF: 1363762





Henry Adams – Midhurst

Henry Adams, Bepton Court, 2 West Street – GU29 9NF

01730 817370 • midhurst@henryadams.co.uk • www.henryadams.co.uk/

Agents Note – Our particulars are for guidance only and are intended to give a fair overall summary of the property. They do not form part of any contract or offer, and should not be relied upon as a statement or representation of fact. Measurements, areas and distances are approximate only. Photographs may include lifestyle shots and pictures of local views.