



**5 Chequers Gardens, Liverpool**  
Liverpool

**£460,000**

## 5 Chequers Gardens

Liverpool, Liverpool

Standing proudly on Chequers Gardens in the highly sought-after suburb of Aigburth, L19, is this magnificent four bedroom semi detached residence, welcomed to the sales market by appointed agents Move Residential. This property boasts an imposing frontage and offers a wealth of living space which has been beautifully maintained throughout. Practically bursting with potential, this residence offers exciting scope for modernisation, presenting an opportunity not to be missed for those searching for a family home they can put their own stamp on.

An entrance hall greets you into the property, leading through to a beautifully presented family lounge which is awash with natural light courtesy of a bay window, presenting a welcoming setting to relax and unwind. This is followed by a second spacious reception room which comfortably accommodates both a sitting and dining area. Featuring French doors which provide views and access out to the rear garden, this provides a delightful social setting for entertaining guests. Continuing through you will find a substantial fitted kitchen and concluding the extensive ground floor is a convenient WC.



# 5 Chequers Gardens

Liverpool, Liverpool

Ascending to the first floor, you will discover two generously sized double bedrooms and a well-proportioned single room, each receiving an abundance of daylight, with the two double bedrooms further benefitting from bay windows. Adding the finishing touch to the interior of this wonderful home is a contemporary style family shower room featuring a deluxe walk-in shower unit.

Externally, the property is further enhanced by an impressive rear garden which provides a fantastic outdoor space for the whole household to enjoy. An expansive lawn offers plenty of room for recreational activities, whilst a patio area and raised decking present serene spots for al-fresco dining and entertaining. To the front, a driveway provides ample off-road parking.

A viewing is highly recommended to fully appreciate the generous proportions and exciting potential that this promising property has to offer, certain to make a wonderful future home for a very lucky family.

Council Tax band: D

Tenure: Freehold





- Magnificent Four Bedroom Detached Residence
- Located In The Sought-After Suburb Of Aigburth
- Beautifully Maintained & Bursting With Potential
- Entrance Hall & Welcoming Bay-Fronted Lounge
- Open Plan Living/Dining Area & Sizable Kitchen
- Two Double Bedrooms & Spacious Single Room
- Contemporary Shower Room With Walk-In Unit
- Fantastic Garden To Rear & Off-Road Parking

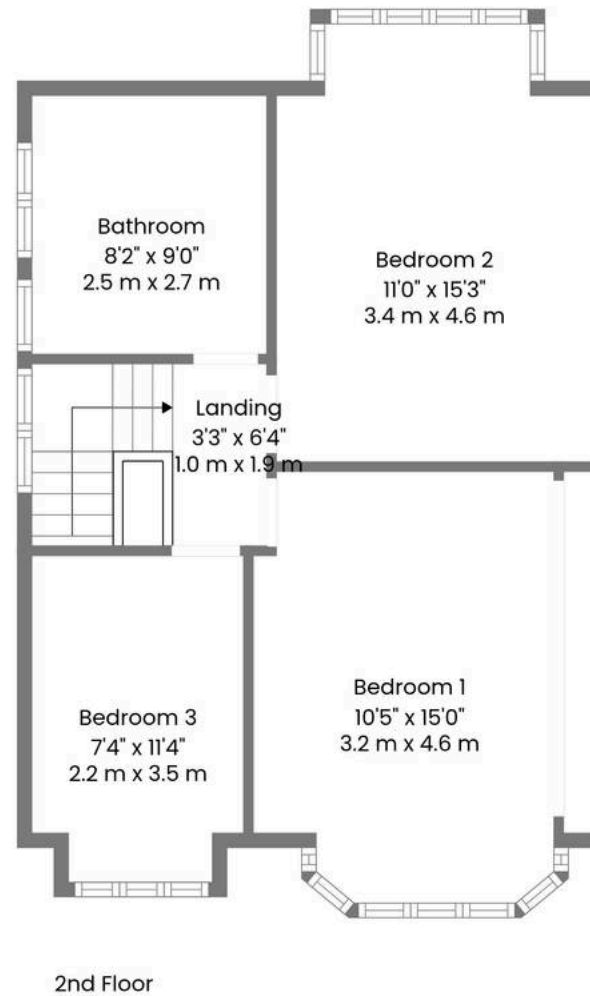
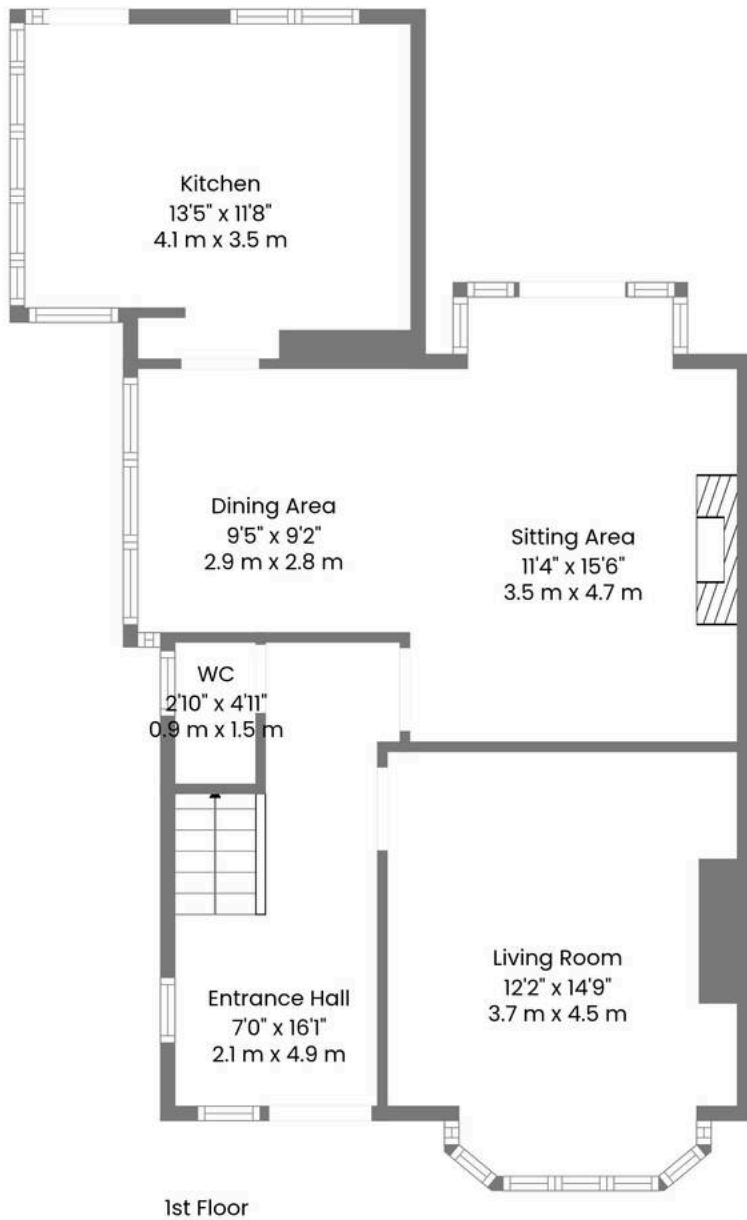
Location: Aigburth is a genuinely varied area of Liverpool with plenty of local character, popular with students, investors, professionals and families. Property largely consists of traditional terraced housing (of all sizes) but with some large Victorian villas around Sefton Park and apartments (both purpose built and converted) appealing to both the buying and rental market. At the heart of the area is Sefton Park, Grade II listed and covering a massive 235 acres it has something for everyone including the spectacular Victorian Palm House. Further open space can be found nearby at the Green Flag rated Greenbank Park. Connecting Aigburth Road to Sefton Park, Lark Lane attracts students, young professionals and families alike to its bohemian mix of shops, restaurants, bars, regular Farmer's Market and unique atmosphere. Further shopping is also available on Aigburth Road and there is no shortage of sport and leisure facilities, including Greenbank Sports Academy, Sefton Park and Liverpool Cricket Clubs, the Mersey Bowman Lawn Tennis Club and several Yoga and Martial Arts centres. Schools in the area are well regarded, including private schools, The Belvedere Academy and Auckland College and St Margaret's and St Hilda's C of E High Schools. Travel connections include Aigburth and St Michael's train stations, main bus routes along Aigburth Road and easy routes to John Lennon Airport and the M62.











**TOTAL: 1250 sq. ft, 116 m2**  
 1st floor: 703 sq. ft, 65 m2, 2nd floor: 547 sq. ft, 51 m2  
 EXCLUDED AREAS: WALLS: 117 sq. ft, 11 m2