

15 Central Avenue, Littleborough

£185,000 Leasehold

Spacious three bedroomed terrace, sitting within prime location in the centre of Littleborough • Within walking distance to all the usual amenities and shops • Littleborough has a charming aura, with a number of independently run and owned shops as well as larger chains such as Sainsburys, Co-op and Lidl • Close by to a number of local beauty spots, Hare Hill park, Blackstone Edge and local tourist attraction Hollingworth Lake country park • Spacious kitchen with pantry store, newly fitted bathroom suite in June 2025 and newly decorated throughout • Gas central heating via annually serviced 'Ideal' combination boiler • Spacious lounge with attractive bay window • Rear yard • NO CHAIN

Charming 3-bed terrace in Littleborough heart. Close to amenities, parks, & shops. Modern kitchen & bathroom (June 2025). Efficient heating, spacious lounge, tranquil rear yard. No chain. Live the urban dream in this inviting abode. Schedule a viewing today!

Council Tax band: A

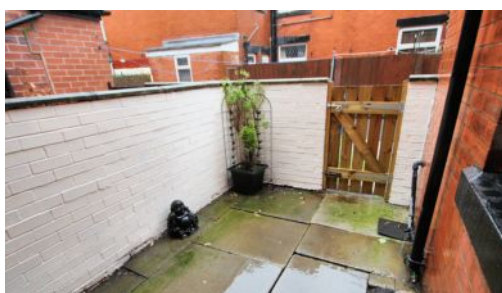
Tenure: Leasehold

EPC Energy Efficiency Rating: C

EPC Environmental Impact Rating:



- Spacious three bedroomed terrace, sitting within prime location in the centre of Littleborough
- Within walking distance to all the usual amenities and shops
- Littleborough has a charming aura, with a number of independently run and owned shops as well as larger chains such as Sainsburys, Co-op and Lidl
- Close by to a number of local beauty spots, Hare Hill park, Blackstone Edge and local tourist attraction Hollingworth Lake country park



GROUND FLOOR

Entrance Hallway

3' 3" x 3' 8" (0.99m x 1.12m)

Lounge

13' 11" x 16' 8" (4.24m x 5.08m)

Dining Kitchen

14' 3" x 12' 10" (4.34m x 3.91m)

FIRST FLOOR

Landing

11' 5" x 6' 3" (3.48m x 1.91m)

Bedroom

9' 5" x 10' 2" (2.87m x 3.10m)

Bedroom

8' 8" x 10' 1" (2.64m x 3.07m)

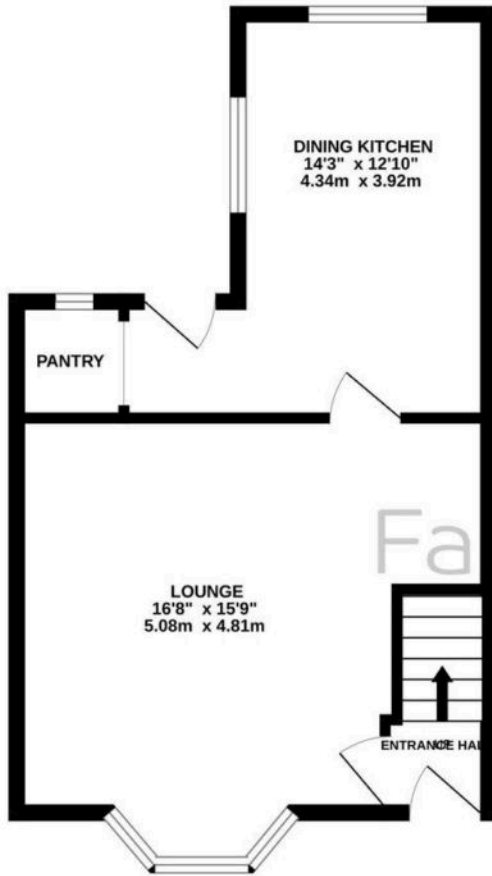
Bedroom

8' 0" x 8' 9" (2.44m x 2.67m)

Bathroom

5' 6" x 6' 3" (1.68m x 1.91m)

GROUND FLOOR
399 sq.ft. (37.1 sq.m.) approx.



1ST FLOOR
390 sq.ft. (36.2 sq.m.) approx.



TOTAL FLOOR AREA : 789 sq.ft. (73.3 sq.m.) approx.

Whilst every attempt has been made to ensure the accuracy of the floorplan contained here, measurements of doors, windows, rooms and any other items are approximate and no responsibility is taken for any error, omission or mis-statement. This plan is for illustrative purposes only and should be used as such by any prospective purchaser. The services, systems and appliances shown have not been tested and no guarantee as to their operability or efficiency can be given.
Made with Metropix ©2025

You can include any text here. The text can be modified upon generating your brochure.

