



Enhanced with AI by STREET

The Glasshouse, The Manor Church Street  
£1,275 pcm

 **Comfort**  
Estates



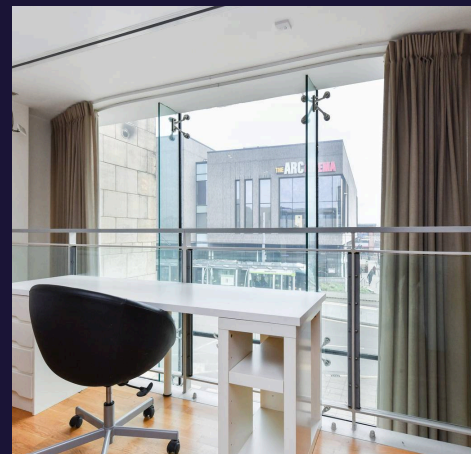
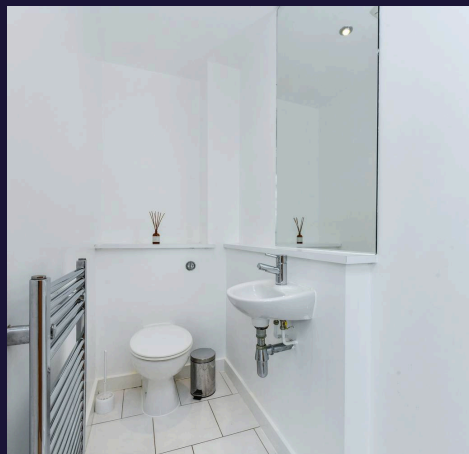
## The Glasshouse

The Manor Church Street, Nottingham

Comfort Estates are delighted to bring to the market this unique two-bedroom duplex apartment, ideally located in the popular area of Beeston. The property offers a spacious open-plan living area, flooded with natural light thanks to impressive floor-to-ceiling feature windows, creating a bright and welcoming living space. In brief, the apartment comprises a generous open-plan living and kitchen area with high ceilings, wood flooring and striking windows throughout. The modern kitchen is fitted with integrated appliances and finished with contemporary spotlights. To the first floor, there are two well-proportioned double bedrooms, both offering ample space and storage. The main bathroom is fitted with a white three-piece suite, with an additional WC located on the ground floor for added convenience. The apartment is superbly positioned on the doorstep of Beeston town centre, which offers a wide range of amenities including independent boutiques, high street shops and large supermarkets. Excellent transport links are also close by, with both tram and bus routes providing easy access to Nottingham city centre, Queen's Medical Centre and surrounding areas.

Additional benefits include an allocated parking space. The property is available to move into from 4th March 2026.

Comfort Estates are delighted to bring to the market this unique two-bedroom duplex apartment, ideally located in the popular area of Beeston.







## The Glasshouse

The Manor Church Street, Nottingham

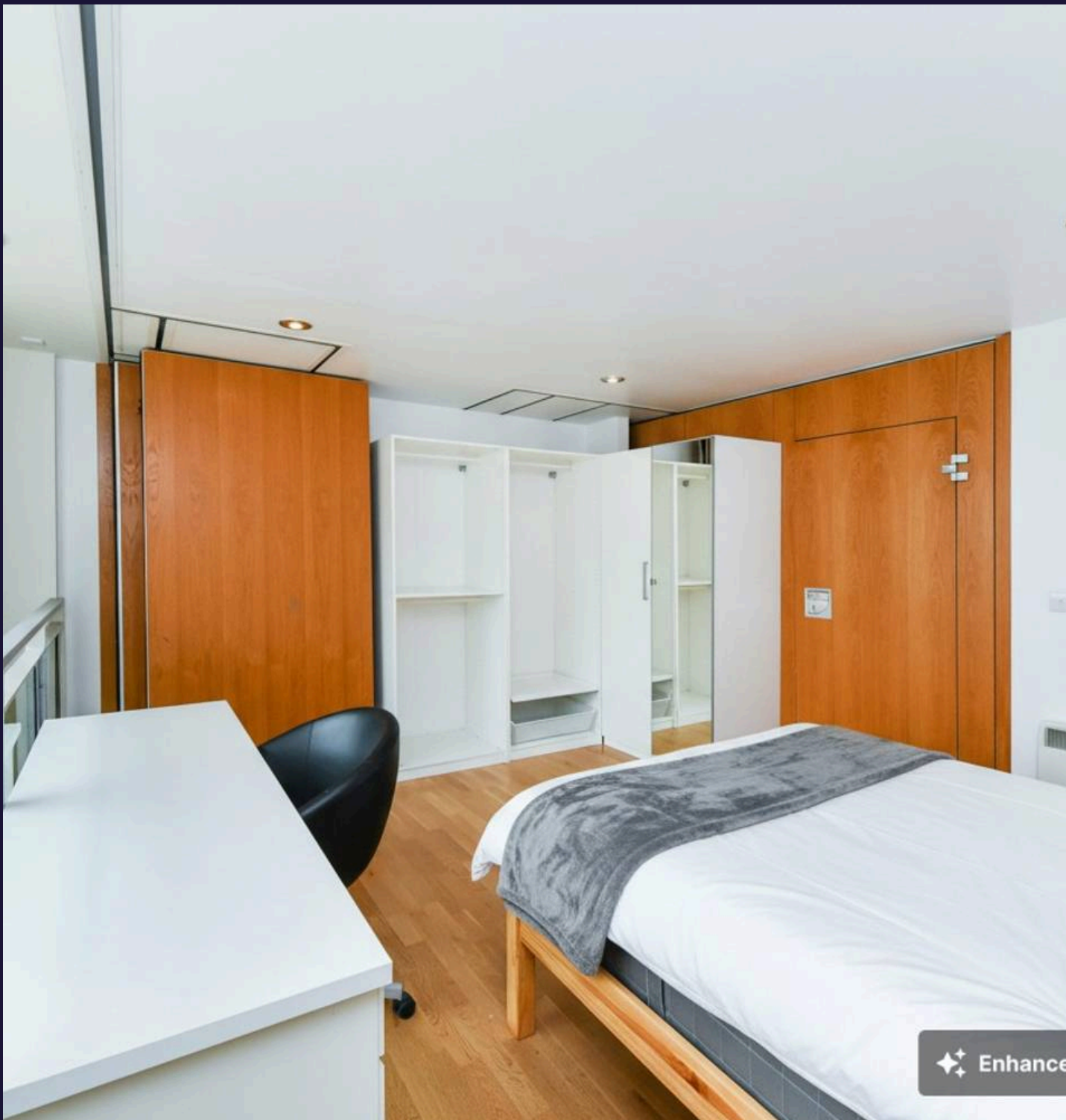
| Modern Duplex Apartment | Two Double Bedrooms | Fully Furnished |  
Allocated Parking Space | Central Beeston Location | Available 4th March  
2026 | Floor to Ceiling Windows |  
Council Tax band: C

Tenure: Leasehold

EPC Energy Efficiency Rating: C

EPC Environmental Impact Rating: C

- Allocated Secure Parking
- Fully Furnished
- Central Beeston Location
- Duplex Apartment
- Nearby High Street Shops
- Available 4th March 2026
- Two Double Bedrooms
- Open Plan Kitchen & Living Area
- Integrated Kitchen Appliances



### Open Plan Living

41' 5" x 34' 3" (12.63m x 10.43m)

A bright and spacious open plan kitchen / living room, furnished with an L shaped sofa and TV. The kitchen is equipped with integrated appliances including an oven, hob, dishwasher, fridge, freezer and microwave. The dining area is furnished with a frosted table and four chairs, and plenty of storage space. The room is neutrally decorated with white walls, wood flooring and spotlights. With large windows, the space is flooded with natural light.

### Downstairs Toilet

A downstairs toilet fitted with a low flush WC, pedestal wash hand basin with mirror over and heated towel rail. Decorated with white walls and white tiled flooring.

### Master Bedroom

15' 6" x 12' 6" (4.73m x 3.80m)

The master bedroom is furnished with a double bed, bedside table, desk and chair, built in wardrobe with a floor length mirror. Decorated with wooden flooring, white walls and spotlights.

### Bedroom 2

11' 5" x 9' 5" (3.49m x 2.86m)

The second bedroom is a great size, furnished with a double bed and built in wardrobe offering plenty of storage. The floor to ceiling window offers ample light to the bedroom which is decorated with beige carpets and white walls.

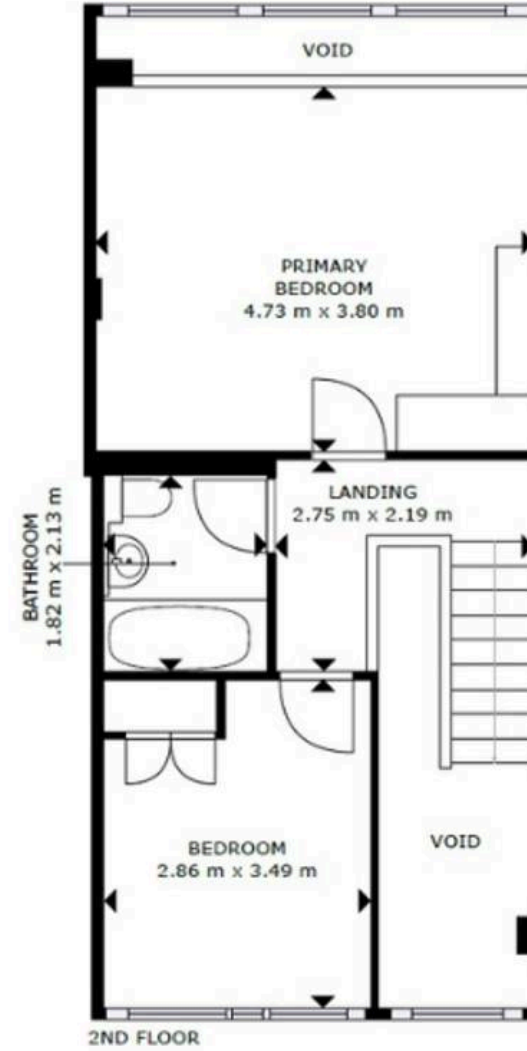
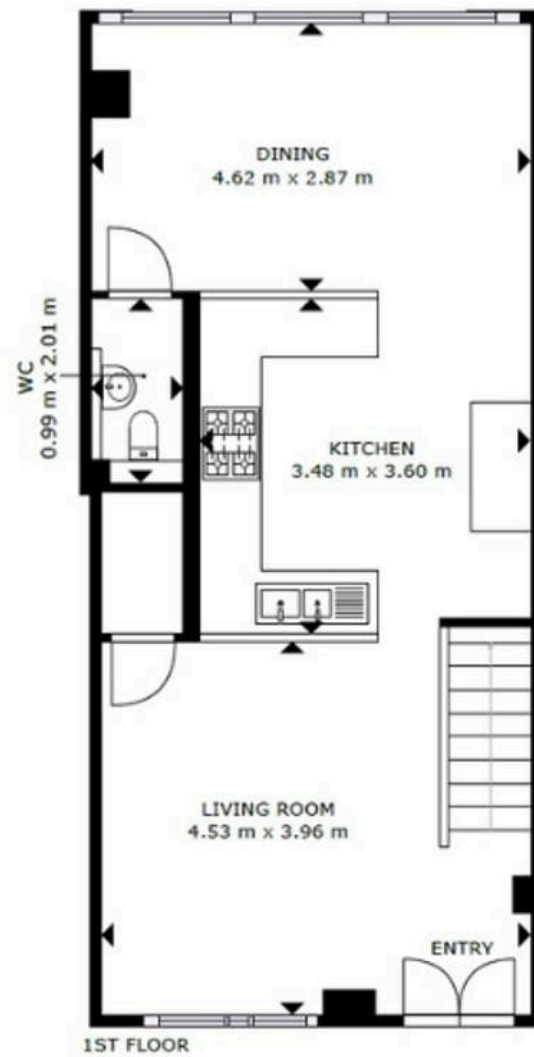
### Bathroom

7' 0" x 5' 4" (2.13m x 1.62m)

The family bathroom is neutrally decorated and tiled throughout. There is a WC, heated towel rail, washbasin, mirror and bath with shower over.











## Comfort Estates

Comfort Estates, 47 Derby Road - NG1 5AW

0115 9338997 • [info@comfortestates.co.uk](mailto:info@comfortestates.co.uk) • [www.comfortestates.co.uk](http://www.comfortestates.co.uk)