



8 Wood Heath Way, Eastham

£425,000 Freehold

Impressive and Substantial Five Bedroom Three Storey Detached Residence • Spanning Over 1900 Square Feet of Magnificent Living Accommodation • Hallway, Open Plan Living Kitchen Diner, Office/Snug, W.C and Utility Room • First Floor Lounge and Master Bedroom with Walk in Wardrobe and En Suite • Four Well Proportioned Second Floor Bedrooms En Suite and Family Bathroom • Off Road Parking, Detached Double Garage and Front Outlook Over a Green • Private Enclosed Rear Garden Mainly Laid to Lawn with Patio Area • Sought After Area of Eastham within Easy Reach of Amenities and Schools

Council Tax band: F

Tenure: Freehold

EPC Energy Efficiency Rating: C

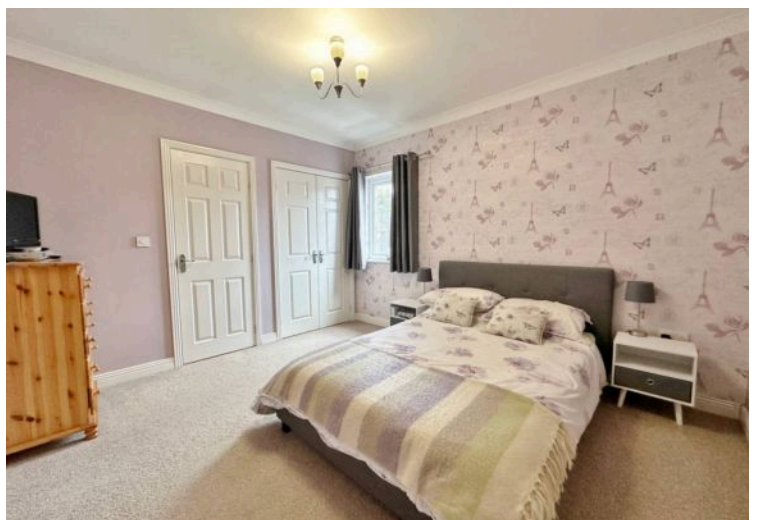
EPC Environmental Impact Rating: D

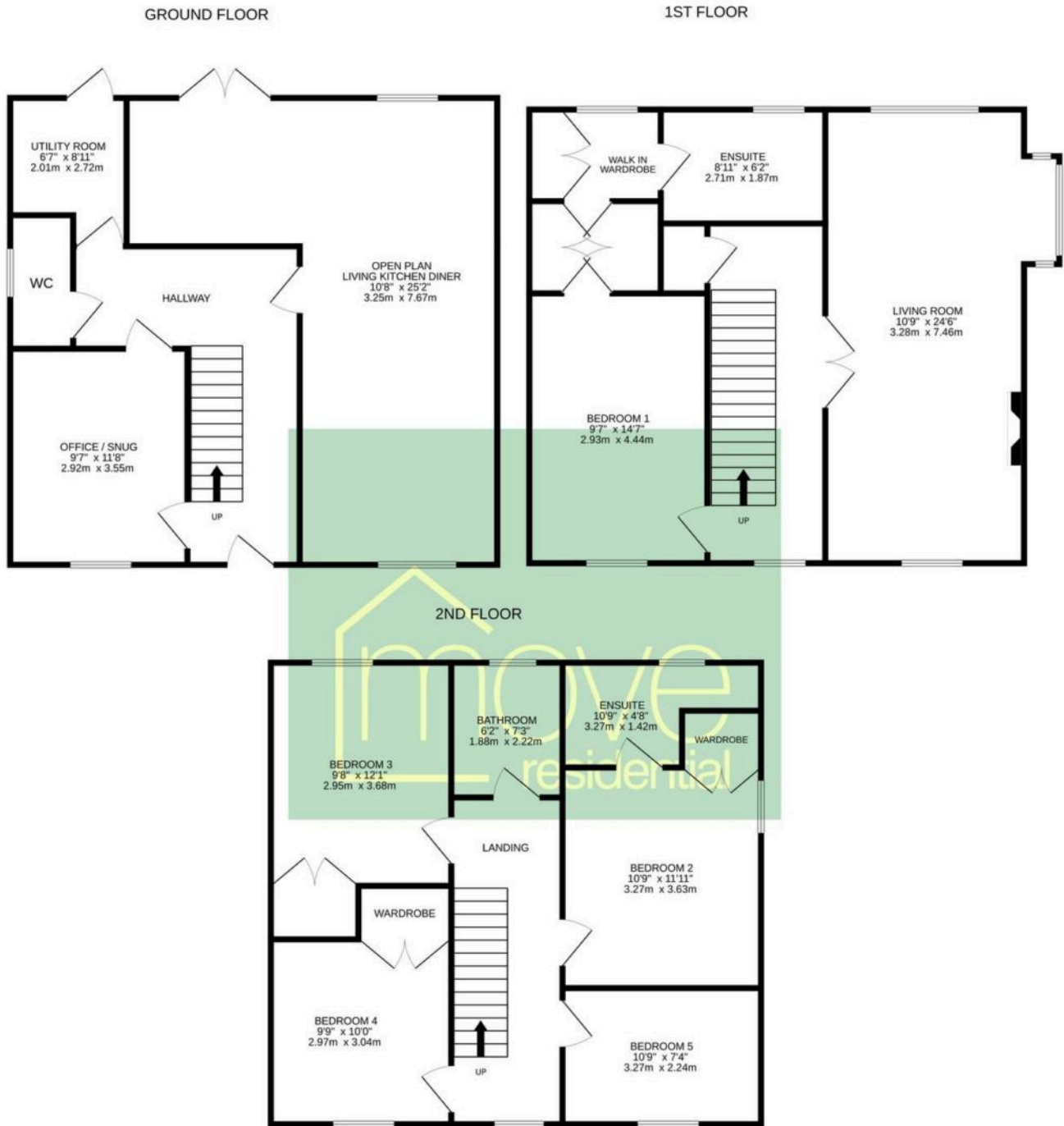


- › Impressive and Substantial Five Bedroom Three Storey Detached Residence
- › Spanning Over 1900 Square Feet of Magnificent Living Accommodation
- › Hallway, Open Plan Living Kitchen Diner, Office/Snug, W.C and Utility Room
- › First Floor Lounge and Master Bedroom with Walk in Wardrobe and En Suite
- › Four Well Proportioned Second Floor Bedrooms En Suite and Family Bathroom
- › Off Road Parking, Detached Double Garage and Front









TOTAL FLOOR AREA : 1969 sq.ft. (182.9 sq.m.) approx.

Whilst every attempt has been made to ensure the accuracy of the floorplan contained here, measurements of doors, windows, rooms and any other items are approximate and no responsibility is taken for any error, omission or mis-statement. This plan is for illustrative purposes only and should be used as such by any prospective purchaser. The services, systems and appliances shown have not been tested and no guarantee as to their operability or efficiency can be given.

Made with Metropix ©2025

You can include any text here. The text can be modified upon generating your brochure.