



16 Swan Mews Wharf Road, Wendover

TR TIM RUSS
& Company



16 Swan Mews Wharf Road

Wendover

- A Well-Presented Apartment
- Two Double Bedrooms
- Large Lounge/Dining Room with Balcony Access
- Kitchen with Appliances
- Communal Grounds
- Unfurnished
- Available Beginning March



16 Swan Mews Wharf Road

Wendover

Well presented two bedroom first floor apartment located moments from the Grand Union Canal and easy walking to the local schools and amenities. The reception is double aspect with French doors to two balconies, one of which enjoys lovely views of the canal path. With modern kitchen and bathroom the property also benefits from its own entrance, allocated parking for one car plus visitors' parking. Available beginning of March. EPC rating D.

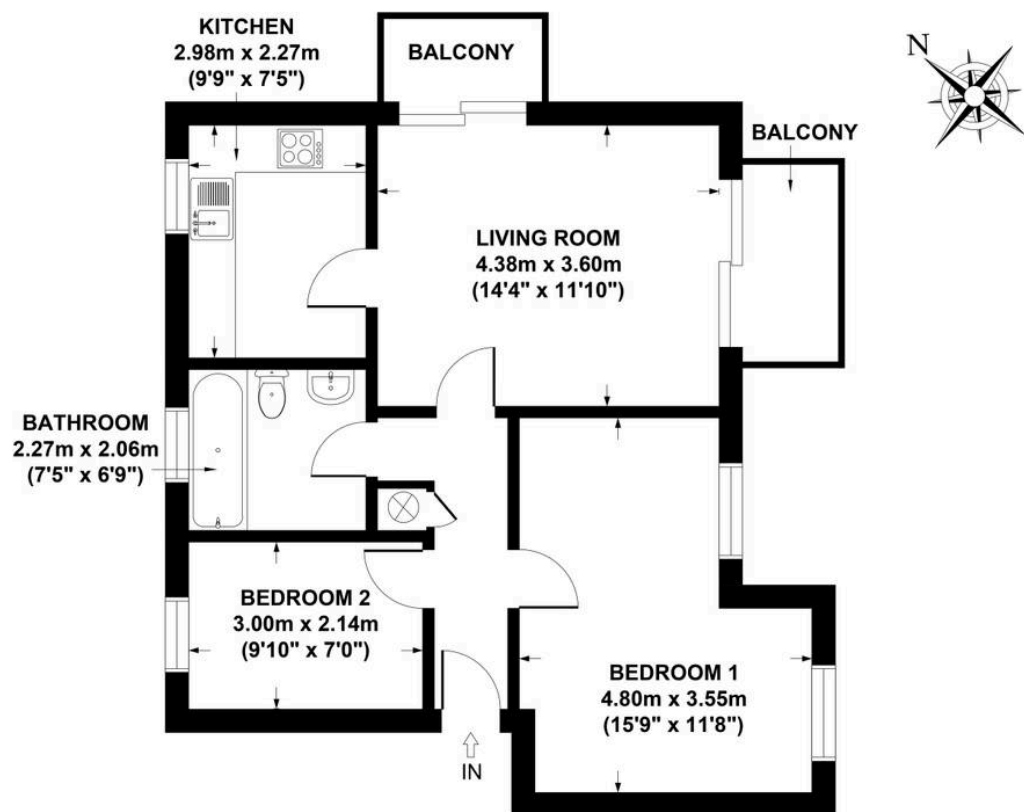
Council Tax band: D

Tenure: Leasehold

EPC Energy Efficiency Rating: D

EPC Environmental Impact Rating: E





GROSS INTERNAL
FLOOR AREA 56 SQ M / 605 SQ FT

SWAN MEWS, WENDOVER, HP22 6EZ
APPROX. GROSS INTERNAL FLOOR AREA 56 SQ M / 605 SQ FT

FLOOR PLAN IDENTIFICATION PURPOSES ONLY -NOT TO SCALE

Tim Russ and Company

Tim Russ & Co, 4 Chiltern Court Back Street - HP22 6EP

01296 621177 • wendoverlettings@timruss.co.uk • timruss.co.uk/

By law we must verify every seller and buyer for anti-money laundering purposes.
Checks are carried out by our partners at Lifetime Legal for a non-refundable £60 (incl. VAT) fee, paid directly to them.
For more information please visit our website.

