



Maison Du Cerisier Le Mont Sohier, St. Brelade
£3,500,000

BROADLANDS
FINDING YOU A HOME SINCE 1972

Maison Du Cerisier Le Mont Sohier

St. Brelade, Jersey

- Located in St Brelade's Bay, very close to the beach
- Detached family home with a practical, flexible layout
- 4 double bedrooms, 3 bathrooms
- 3 reception rooms plus a dedicated office space
- Private landscaped gardens with a large decked terrace, gated entrance, driveway parking + detached garage
- Private and quiet
- Scope to extend and enhance (subject to permissions)
- Contact harry@broadlandsjersey.com



Maison Du Cerisier Le Mont Sohier

St. Brelade, Jersey

Detached, spacious, and properly set up for family life.

Four double bedrooms. Three bathrooms. Three reception rooms.

A bright, open-plan **kitchen and dining space** sits at the centre of the house, with clean modern finishes, integrated appliances, and big windows that bring the outside in.

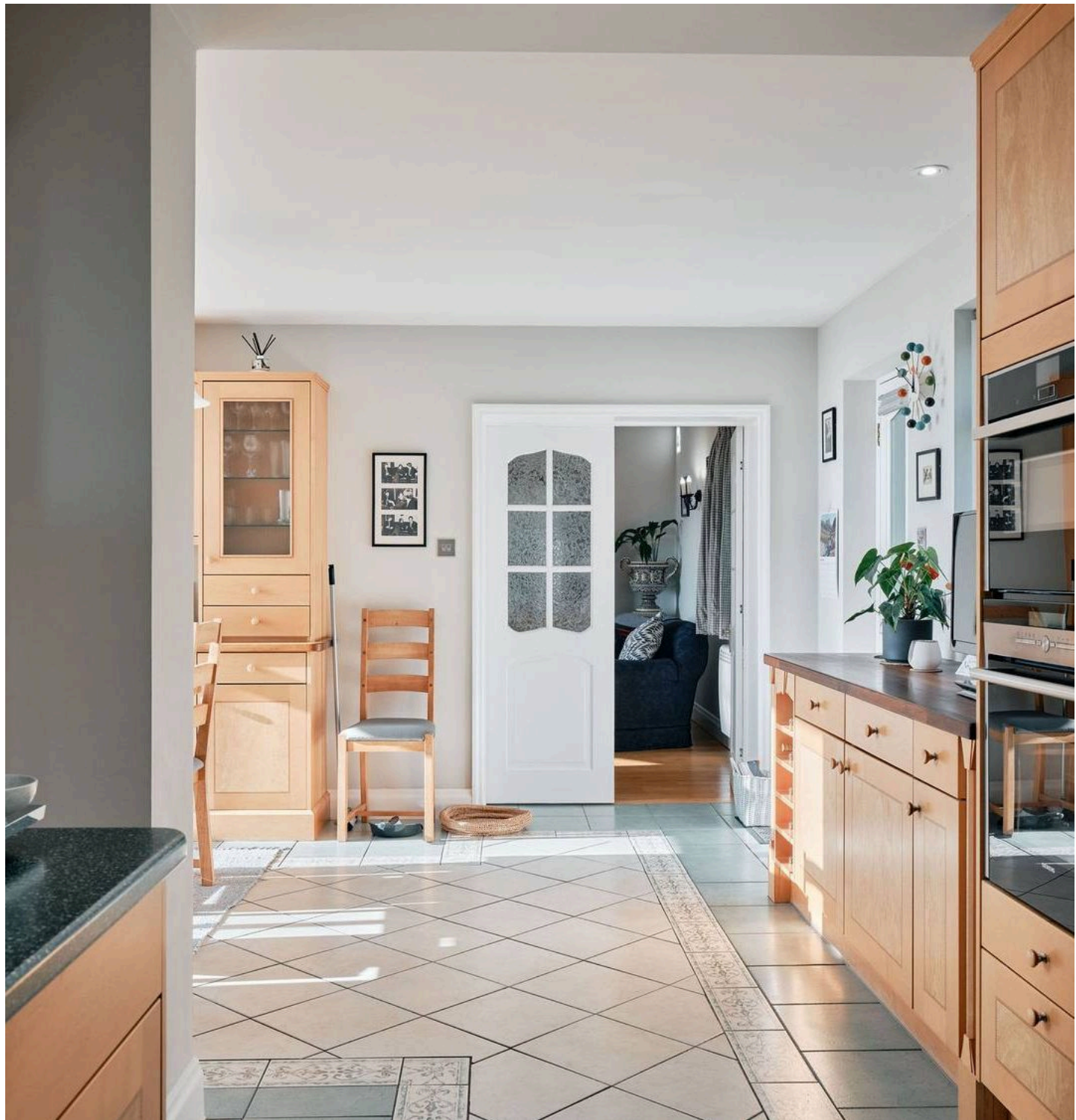
The living spaces are flexible — room for a main lounge, a second sitting room, and a separate dining or snug area. Character features add warmth without fuss, including **fireplaces, exposed beams, and wood flooring**. There's also a **dedicated office** and a strong sense of arrival from the entrance hall.

Outside, the gardens are a standout: **landscaped, private, and genuinely usable**. Lawns, mature planting, and multiple places to sit and entertain, with a **large decked terrace** that works brilliantly in summer. A **gated entrance, detached garage**, and generous driveway parking complete the package.

And if you're the type who likes to put your own stamp on a place, there's **clear scope to extend and enhance**, subject to the usual permissions.

The big win here is the **privacy and outlook** — it feels tucked away, but still open.

For more information, contact
harry@broadlandsjersey.com.





Living

Detached and spacious, with three reception rooms so the house actually works day-to-day: a main lounge, a second sitting room, and a separate dining/snug space. Character comes through in the right way — fireplaces, exposed beams, and wood flooring — plus a dedicated office and a proper entrance hall that gives the place a strong sense of arrival.

Kitchen & dining

A bright, open-plan kitchen/dining room at the centre of the home. Modern finishes, integrated appliances, and big windows that bring the outside in.

Sleeping

Four double bedrooms and three bathrooms, with well-proportioned rooms and a layout that suits family life without feeling cramped. the master bedroom has a large walk in wardrobe and en-suite.

Additional Rooms

Laundry room and utility room with direct access from the utility room to a separate outside paved clothes drying area.

Outside

Landscaped gardens that are private, quiet and genuinely usable — lawns, mature planting, and multiple places to sit. A large decked terrace makes entertaining easy. Summer house with hot and cold water, WIFI, fridge and freezer. Gated entrance, detached garage, and plenty of driveway parking.

Potential

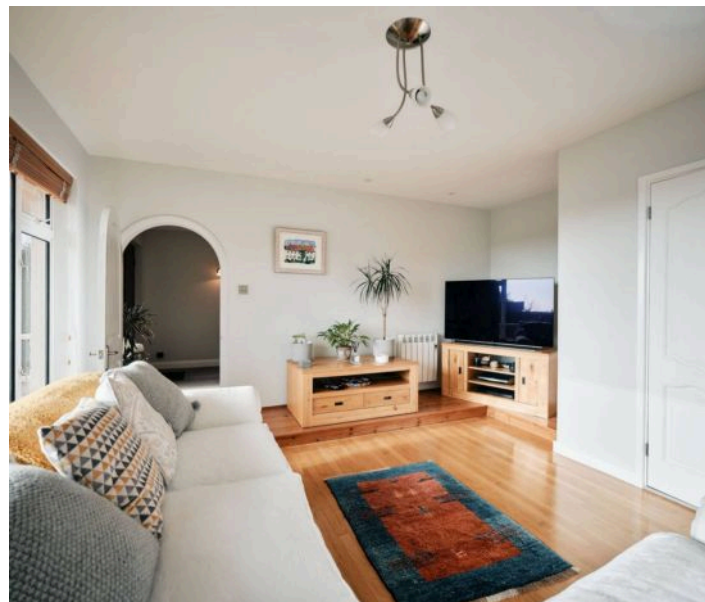
Clear scope to extend and enhance, subject to the usual permissions.

Services

Mains drains. Electric heating

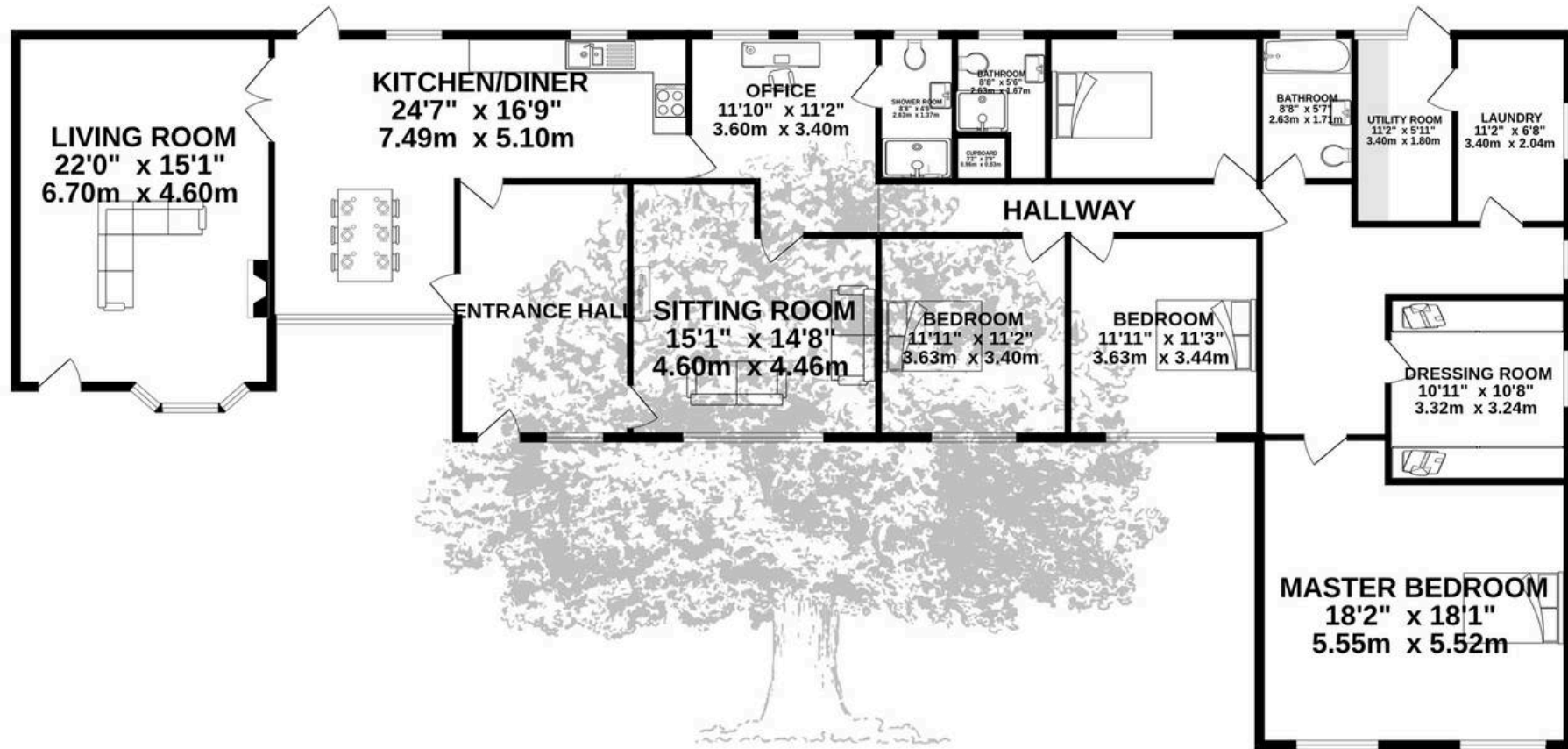
Parking

Double garage and parking for 4 cars





GROUND FLOOR
2379 sq.ft. (221.1 sq.m.) approx.



TOTAL FLOOR AREA : 2379 sq.ft. (221.1 sq.m.) approx.

Whilst every attempt has been made to ensure the accuracy of the floorplan contained here, measurements of doors, windows, rooms and any other items are approximate and no responsibility is taken for any error, omission or mis-statement. This plan is for illustrative purposes only and should be used as such by any prospective purchaser. The services, systems and appliances shown have not been tested and no guarantee as to their operability or efficiency can be given.

Made with Metropix ©2026



Broadlands

Broadlands Estates, Library Place - JE2 3NL

01534 880770 • enquiries@broadlandsjersey.com • www.broadlandsjersey.com/

BROADLANDS

FINDING YOU A HOME SINCE 1972