



Roxborough Walk, Woolton
Liverpool

£270,000



- Delightful Three Bedroom Semi Detached Residence
- Peaceful Cul-De-Sac Location In Desirable Woolton
- Well-Maintained With Plenty Of Potential Throughout
- Entrance Hall, Spacious Living Room & Fitted Kitchen
- Further Sitting Room Opens Into Charming Orangery
- Three Bright & Generously Proportioned Bedrooms
- Ensuite To The Master & Three-Piece Bathroom Suite
- Landscaped Rear Garden, Off-Road Parking & Garage

Council Tax band: C

Tenure: Freehold

Roxborough Walk

Woolton, Liverpool

Move Residential are thrilled to welcome to the sales market this delightful three bedroom semi detached home, located on Roxborough Walk, a peaceful cul-de-sac in the ever-desirable area of Woolton, L25. Boasting an attractive frontage, this property is well-proportioned and maintained throughout, and also offers plenty of scope for future owners to put their own stamp on it, promising to make a wonderful home for a growing family.

An entrance hall greets you into the property, leading through to a bright and spacious family lounge which centres around a feature fireplace, providing a welcoming setting to relax and unwind, followed by a fitted kitchen. Continuing through you will find a second reception room which flows seamlessly through to a generous orangery, offering a charming space for enjoying family mealtimes and entertaining guests, awash with natural light and featuring french doors which provide seamless access out to the garden. Ascending to the first floor, you will discover three substantial bedrooms, each receiving plenty of daylight, with the master room further benefitting from an ensuite shower room. Serving the remaining bedrooms and adding the finishing touch to the interior of this promising home is a three-piece family bathroom suite.

Externally, the property further benefits from a landscaped rear garden which enjoys a smartly flagged patio area, presenting the perfect spot for al-fresco dining during the summer. To the front, a driveway provides off-road parking whilst a detached garage offers additional storage space.

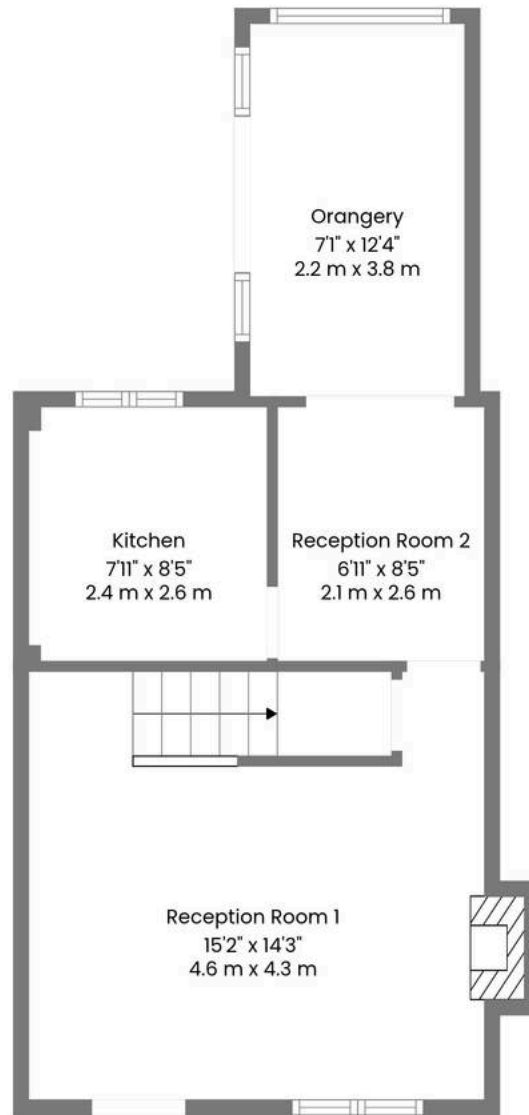












1st Floor



2nd Floor

TOTAL: 791 sq. ft, 73 m2

1st floor: 442 sq. ft, 41 m2, 2nd floor: 349 sq. ft, 32 m2

EXCLUDED AREAS: FIREPLACE: 6 sq. ft, 1 m2, WALLS: 89 sq. ft, 9 m2