



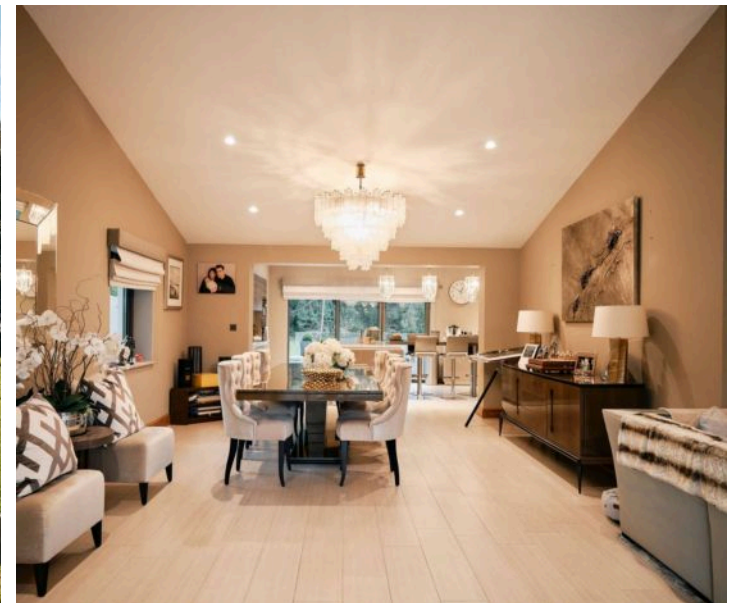
Spinney Hill House, Le Chemin Des Moulins, St. Lawrence
£2,950,000

BROADLANDS
FINDING YOU A HOME SINCE 1972

Spinney Hill House, Le Chemin Des Moulins

St. Lawrence, Jersey

- Exceptional new build in the heart of the island
- 5 Double Bedrooms, 5 Bathrooms (4 En-Suite)
- Fantastic primary suite with walk in wardrobe
- Huge open plan living space
- 2 Sun terraces ideal for entertaining
- South facing garden backing onto equine fields
- Double garage and parking for at least 6 cars
- Call Harry 07797751557 or email harry@broadlandsjersey.com



Spinney Hill House, Le Chemin Des Moulins

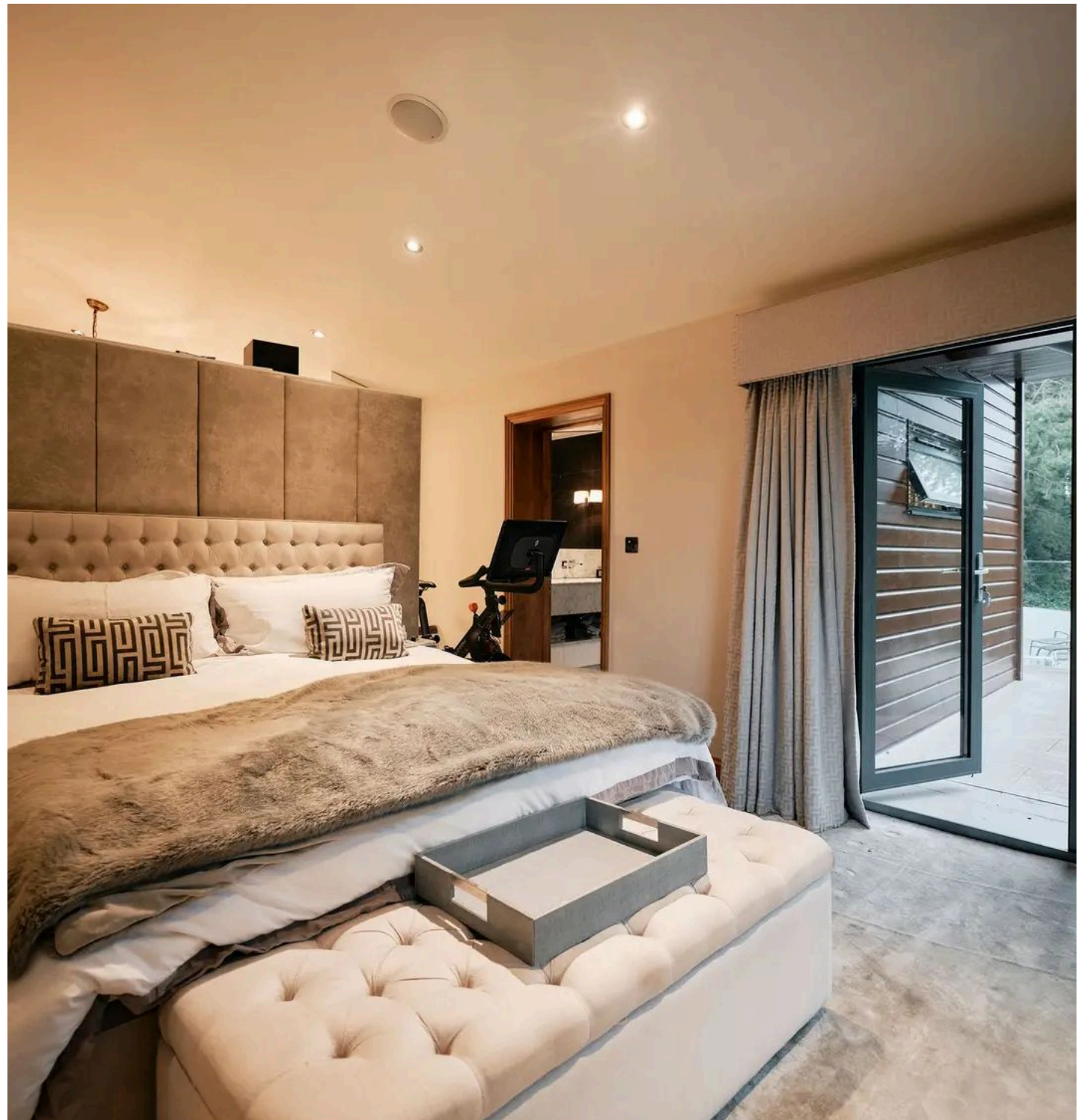
St. Lawrence, Jersey

Superb elevated location & accessed via a private driveway overlooking extensive woodland, a fine example of a luxury property!

Five double bedroom, five bathroom detached house built to the highest standards.

Offering more than meets the eye with a large double garage, ample parking for at least 6 cars, 5 double bedrooms (4 en-suite) including a fantastic primary suite with walk-in wardrobe, superb open plan living space with terraces off both the lounge and the kitchen, swimming pool and south facing garden. Every minute detail has been accounted for in the construction. From top of the range appliances throughout to the tiles used in the hallways.

Surrounded by equine fields the location epitomises peace and quiet. Terraces, pool and garden are all designed with entertaining in mind & ample space to relax & unwind. A unique property, must be seen to be appreciated.





Living

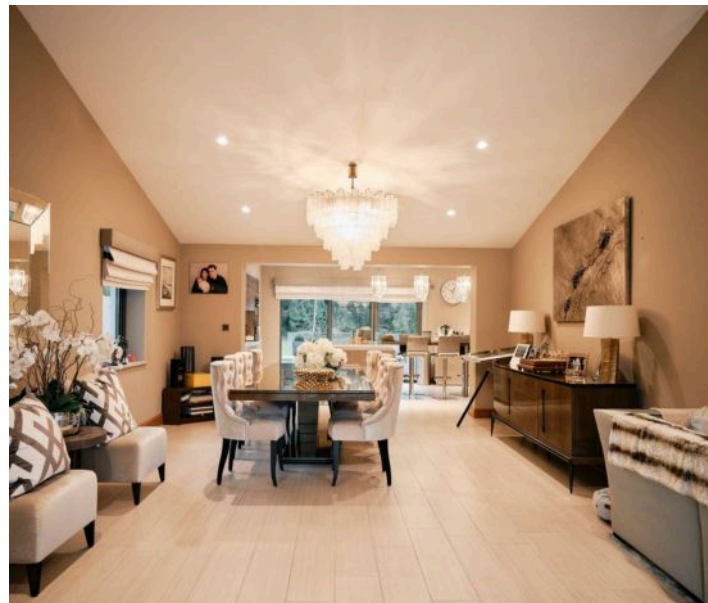
Beautiful entrance hall with feature chandelier. Great living space with tiled floors and bi fold doors to the sun terraces. Very modern kitchen with breakfast bar and all Miele appliances. A superb entertaining space with dining area. Integrated speakers throughout. Separate utility room.

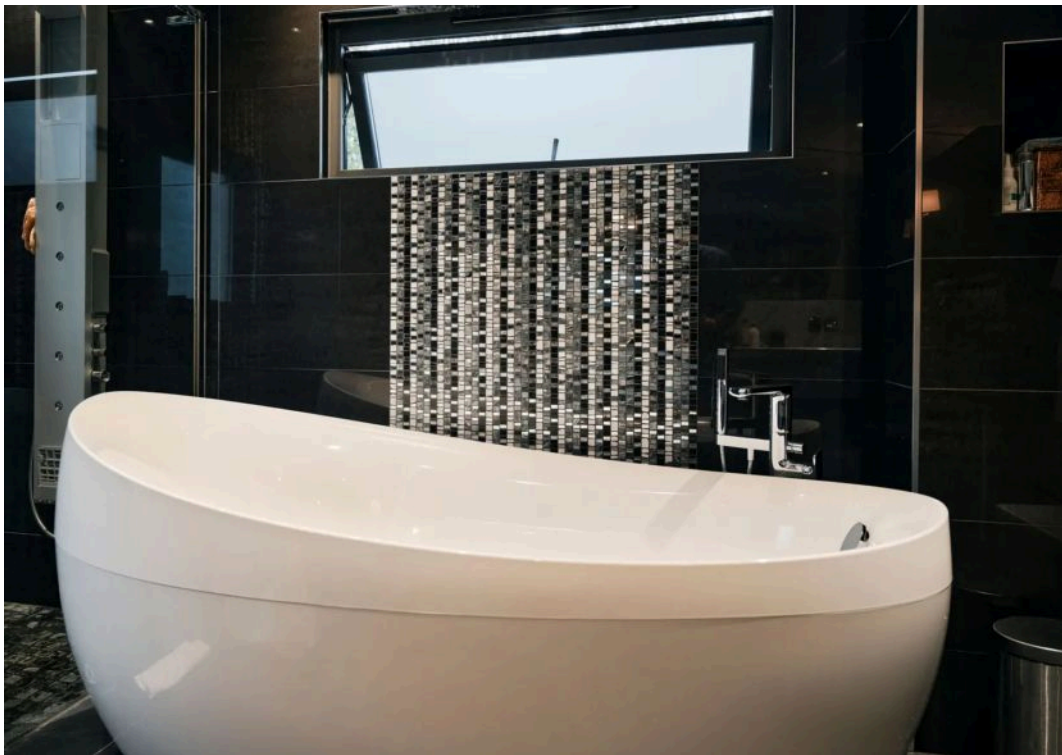
Sleeping

Five double bedrooms, 4 of which are en suite. Fabulous primary suite with walk in wardrobe and valley views.

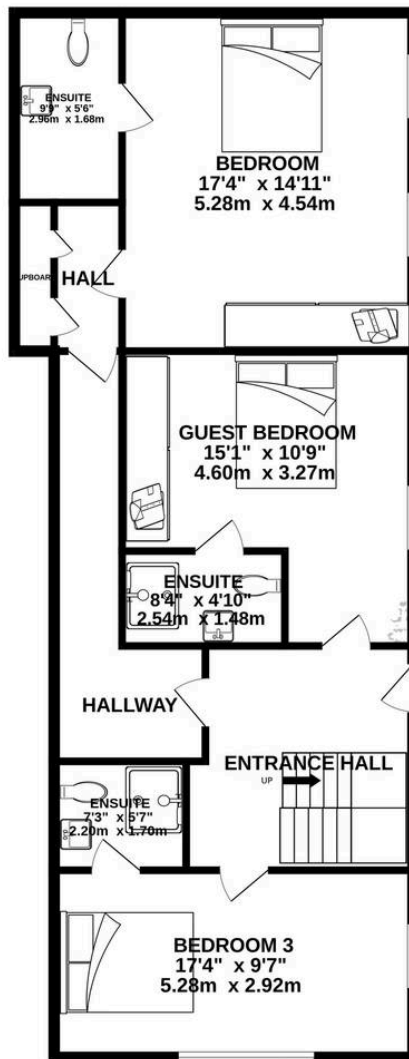
Services

Mains water. Septic tank and soakaway. Wet under floor heating throughout driven by solar panels and air source heat pump. Hot water driven by the same. Sky wired to every room.

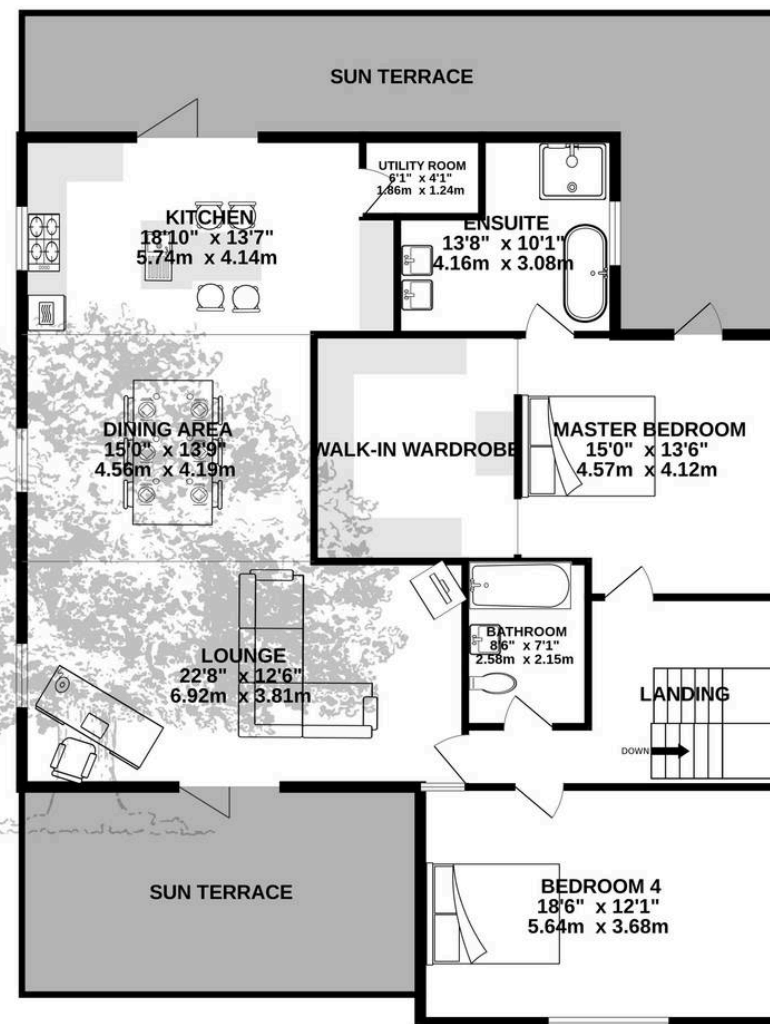


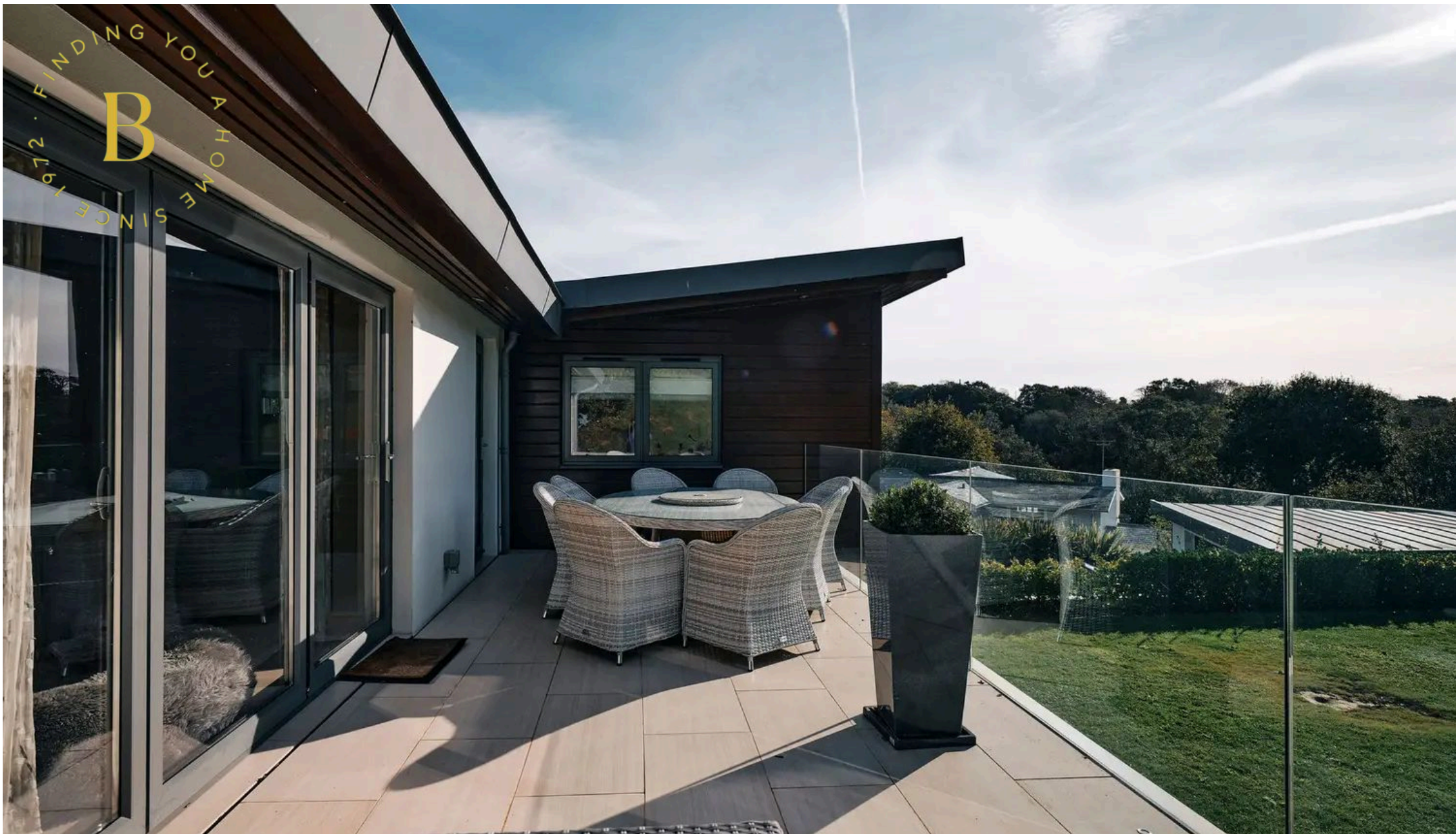


GROUND FLOOR



1ST FLOOR





Broadlands

Broadlands Estates, Library Place - JE2 3NL

01534 880770 • enquiries@broadlandsjersey.com • www.broadlandsjersey.com/

BROADLANDS

FINDING YOU A HOME SINCE 1972