



20 Sandringham Drive, Hove

In Excess of £500,000

**MANSELL
McTAGGART**
Trusted since 1947

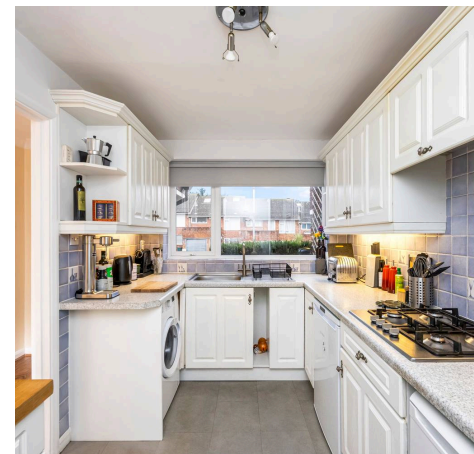
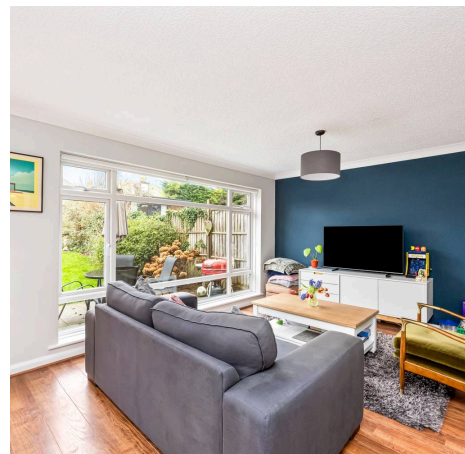
20 Sandringham Drive

Hove, Hove

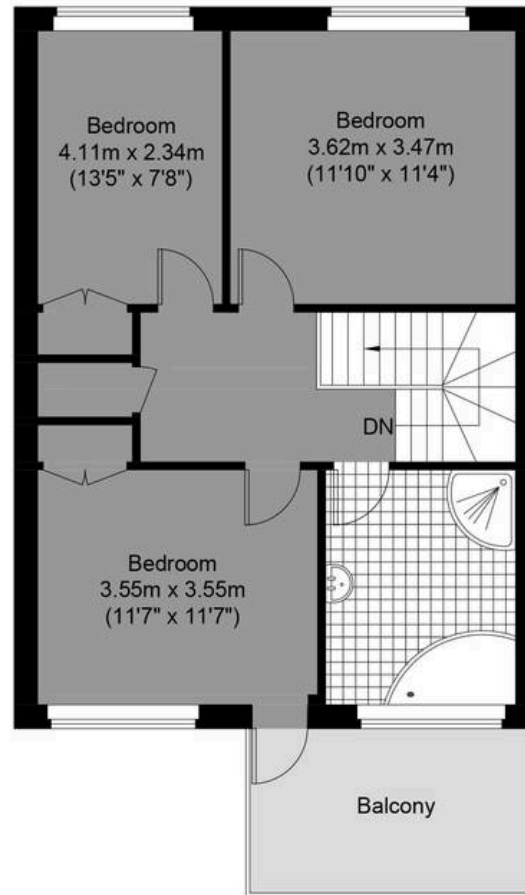
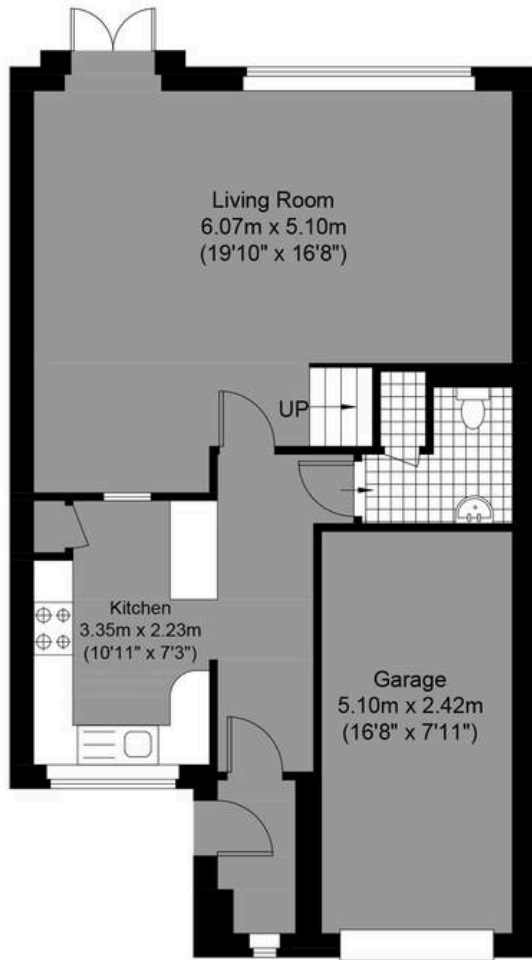
Council Tax band: D

Tenure: Freehold

- Three Bedroom Mid- Terraced House With Balcony
- Off Road Parking For Two Cars & West Facing Garden
- Three Well Proportioned Bedrooms With Master Bedroom Benefiting From Balcony With Sea Views
- Quite Residential Area Of Hove With Easy Links Out Of Brighton
- Large Separate Kitchen
- Perfect Family Home
- Living Room With Space For Dining With French Doors To Rear Garden
- Exclusive To Mansell McTaggart
- Potential To Extend Subject To Planning Permission



Approximate Gross Internal Area (Including Garage)= 111.97 sq m / 1205.22 sq ft



**MANSELL
McTAGGART**
— Trusted since 1947 —



Sandringham Drive

Ground Floor
Approximate Floor Area
647.55 sq ft (60.16 sq m)

First Floor
Approximate Floor Area
557.67 sq ft (51.81 sq m)

Illustration for identification purposes only, measurements are approximate, not to scale.

© Mansell McTaggart



Mansell McTaggart Hove

170 Church Road, Hove - BN3 2DJ

01273 044929

hove@mansellmctaggart.co.uk

www.mansellmctaggart.co.uk/branch/hove/

