



1 Dene Court La Route Orange, St. Brelade

BROADLANDS

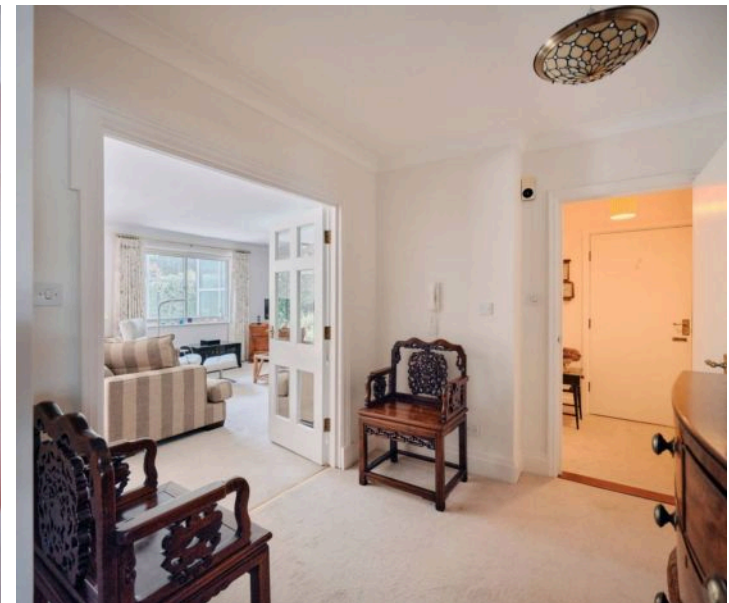
FINDING YOU A HOME SINCE 1972



1 Dene Court La Route Orange

St. Brelade, Jersey

- Purpose built ground floor garden apartment
- Two double bedrooms, two bathrooms (both en-suite), plus cloakroom
- Large living room with separate eat-in kitchen
- Gorgeous south facing private garden
- Additional reception room / study / library / 3rd bedroom
- Garage plus additional parking space
- Bright and spacious throughout
- Amazing location on main bus route and minutes to amenities at Red Houses
- Sole agent / Charlie@broadlandsjersey.com 07700348421



1 Dene Court La Route Orange

St. Brelade, Jersey

Tucked away in a sought after convenient location just moments from the shops and amenities at Red Houses, is this bright and spacious ground floor apartment with private south facing garden.

Beautifully laid out, the apartment boasts two generous size double bedrooms, both with en-suite bathrooms, plus a separate cloakroom for guests. The large living room provides a great space to relax, while the separate eat-in kitchen and additional study or dining room add fantastic additional living space.

Offering a beautiful south facing lawned garden with patio, you also have a garden room plus a store. Further to your private garden are stunning communal gardens with mature trees giving the apartment a park-like feel.

There is a single garage and an additional parking space, plus visitor parking, located in a brilliant convenient location, on a very regular bus route. Broadlands are delighted to be appointed sole agent.





Living

Fully fitted spacious eat-in kitchen with built in appliances and space for large dining table & chairs. Bright and airy living room with sliding doors to the patio with garden beyond. Additional reception room currently fitted for use as a home office, also ideal as separate dining room if desired.

Sleeping

Two large double bedrooms with fitted wardrobes, both with en-suite bathrooms. The main bedroom has a door to the south facing garden.

Outside

Single garage plus additional parking space. Gorgeous south facing private garden with patio. Garden room plus garden store.

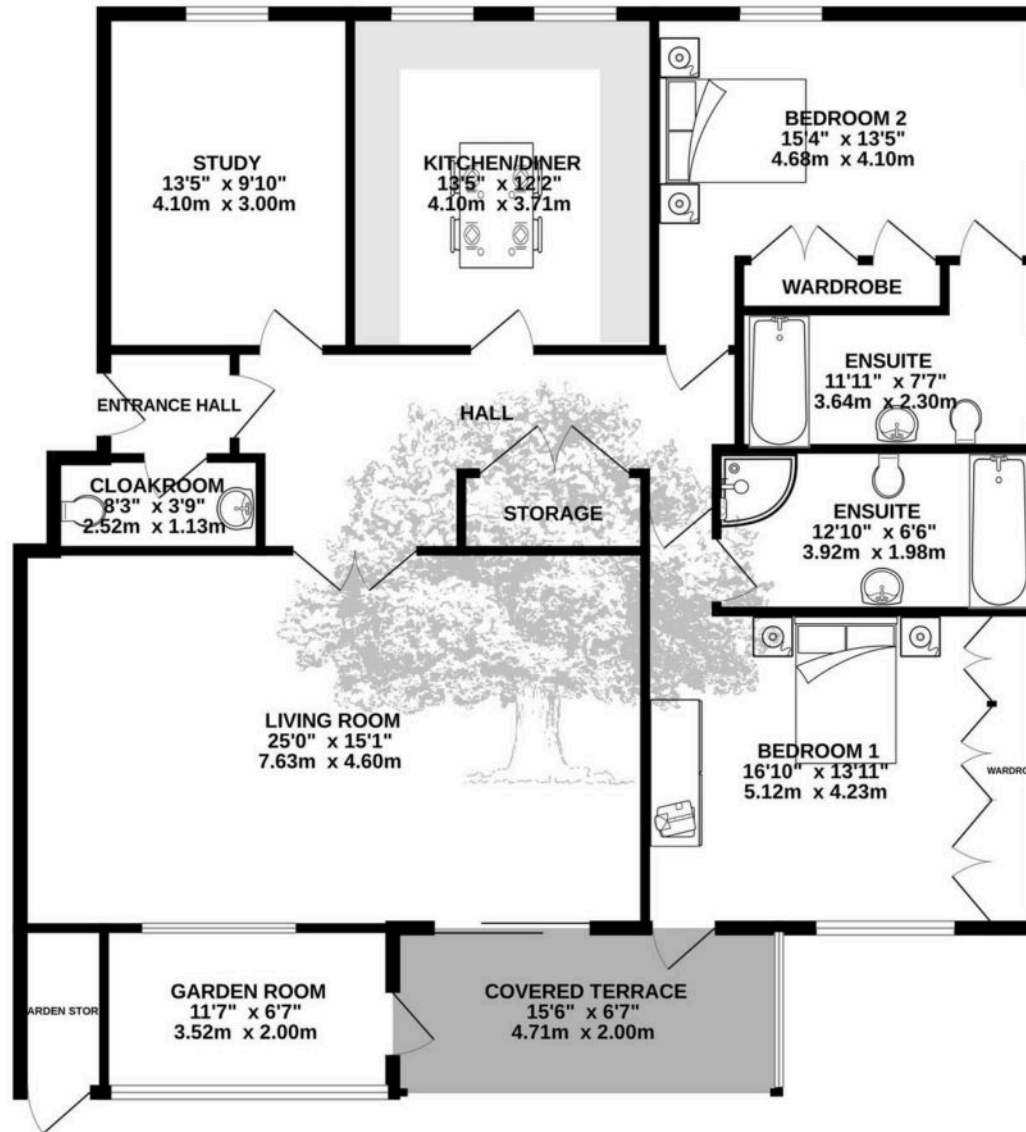
Services

Fully double glazed. Mains drains and water. Electric heating. Service charges are £291 per month. The exterior of Dene Court has recently been re-decorated. Please note* There is a restriction on pets in Dene Court, no pets allowed. There is also a restriction on sub-letting apartments.





GROUND FLOOR
1524 sq.ft. (141.5 sq.m.) approx.



TOTAL FLOOR AREA : 1524 sq.ft. (141.5 sq.m.) approx.

Whilst every attempt has been made to ensure the accuracy of the floorplan contained here, measurements of doors, windows, rooms and any other items are approximate and no responsibility is taken for any error, omission or mis-statement. This plan is for illustrative purposes only and should be used as such by any prospective purchaser. The services, systems and appliances shown have not been tested and no guarantee as to their operability or efficiency can be given.

Made with Metropix ©2025



Broadlands

Broadlands Estates, Library Place - JE2 3NL

01534 880770 • enquiries@broadlandsjersey.com • www.broadlandsjersey.com/

BROADLANDS

FINDING YOU A HOME SINCE 1972