



Belgrave Road, Aigburth
Liverpool

In Excess of **£295,000**



- Truly Stunning Four Bedroom Mid Terrace Property
- Prime Location In Sought-After Suburb Of Aigburth
- Generously Proportioned & Immaculately Presented
- Entrance Hall & Elegant Bay-Fronted Family Lounge
- Inviting Dining Room Flows Into Stylish Fitted Kitchen
- Four Substantial & Beautifully Presented Bedrooms
- Luxury Four-Piece Bathroom & Additional Loft Room
- Substantial Well-Maintained Enclosed Yard To Rear

Council Tax band: B

Tenure: Freehold

EPC Energy Efficiency Rating: D

EPC Environmental Impact Rating: D

Belgrave Road

Aigburth, Liverpool

Enjoying a prime location on Belgrave Road in the highly sought-after suburb of Aigburth, L17, is this truly stunning four bedroom mid terrace home, proudly presented to the sales market by appointed agents Move Residential. The property retains many of its charming original features which harmonise beautifully with high specification modern finishes, promising to make an enviable future home for a very lucky family.

An elegant entrance hall greets you into the property, making a fabulous first impression and leading through to a spacious family lounge, awash with natural light courtesy of a bay window. Impeccably finished in a tasteful décor which complements the ornate ceiling coving and feature fireplace, this presents a welcoming setting to relax and unwind. Following this is a dining room which flows seamlessly through to a modern kitchen, creating a social open plan setting for enjoying family mealtimes and entertaining guests, featuring attractive parquet style flooring throughout. The kitchen is complete with a range of stylish fitted base and wall units, complementary worktops and a selection of sleek integrated appliances, whilst the dining area boasts an exquisite fireplace and a set of bi-fold doors providing seamless access out to the rear yard.



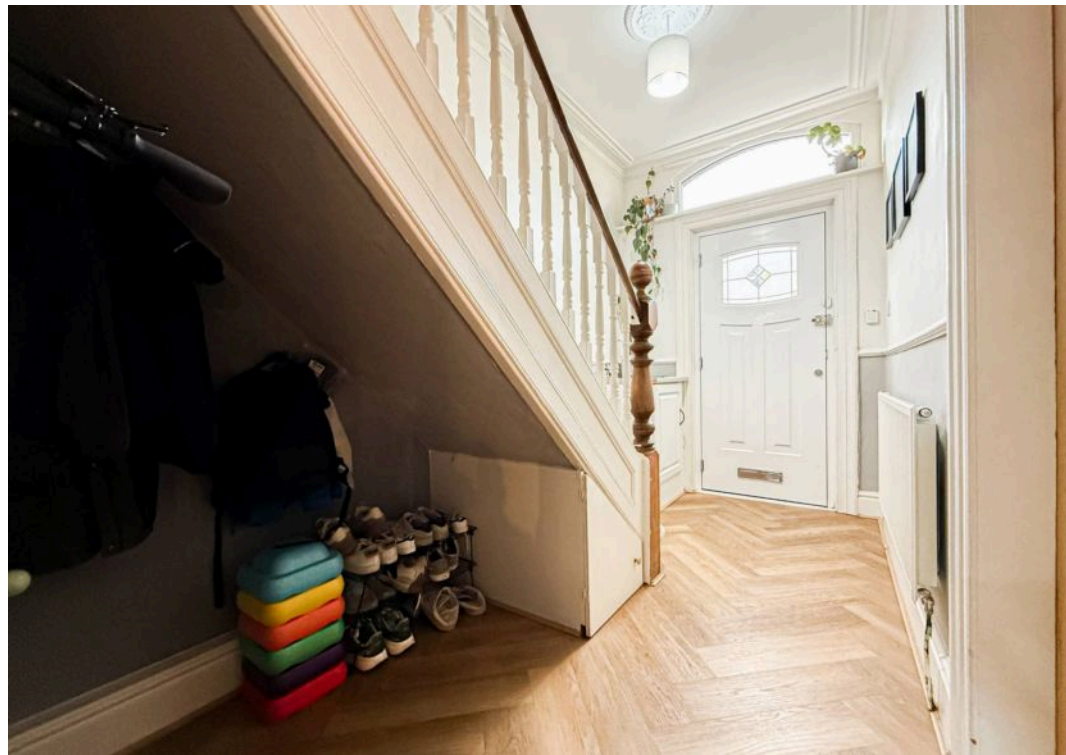
Belgrave Road

Aigburth, Liverpool

The property continues to impress as you ascend to the first floor, where you will discover two generously sized double bedrooms and a well-proportioned single room, each finished to an immaculate standard and receiving plenty of daylight, accompanied by a showstopping four-piece family bathroom suite, featuring a luxurious free-standing bathtub. At the pinnacle of the property, the second floor is home to the fourth and final bedroom, alongside a loft space which offers potential for a wide variety of uses such as a cinema room.

Externally, the property further benefits from a substantial well-maintained rear yard which provides the perfect spot for al-fresco dining during the warmer months.

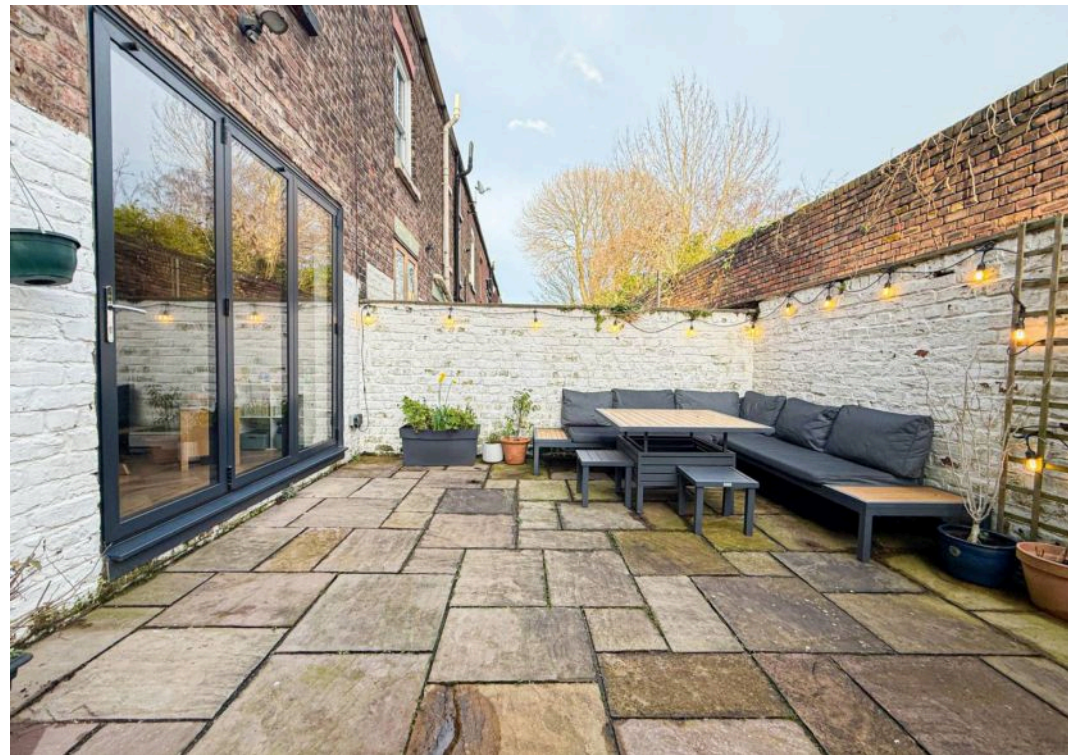






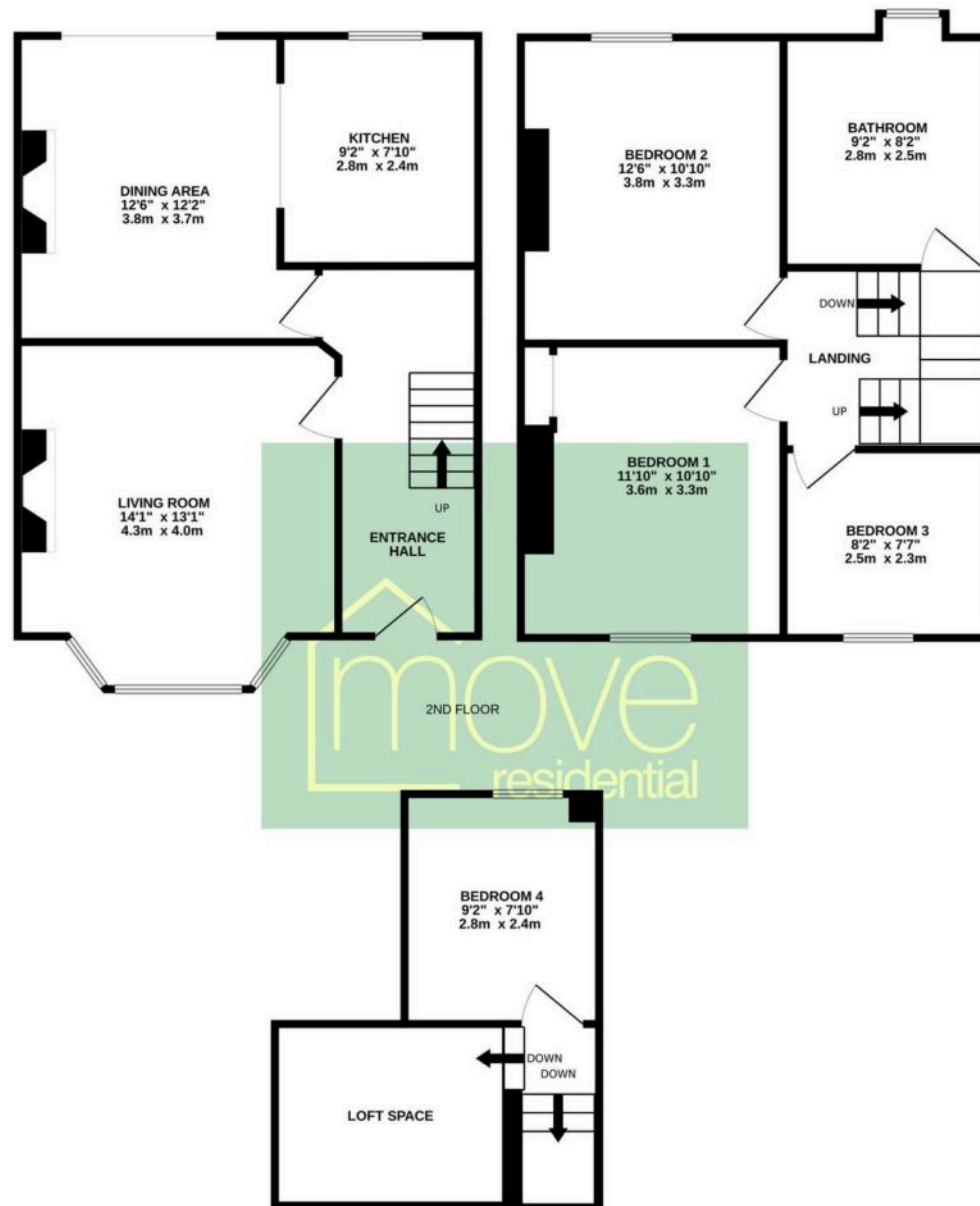






GROUND FLOOR

1ST FLOOR



TOTAL FLOOR AREA : 1195sq.ft. (111.0 sq.m.) approx.

Whilst every attempt has been made to ensure the accuracy of the floorplan contained here, measurements of doors, windows, rooms and any other items are approximate and no responsibility is taken for any error, omission or mis-statement. This plan is for illustrative purposes only and should be used as such by any prospective purchaser. The services, systems and appliances shown have not been tested and no guarantee as to their operability or efficiency can be given.

Made with Metropix ©2026