



La Preterie, La Preterie, St. Peter
£1,695,000

BROADLANDS
FINDING YOU A HOME SINCE 1972

La Preterie, La Preterie

St. Peter, Jersey

- Detached home in lovely countryside location
- Stunning kitchen/diner with vaulted ceiling and bi-folding doors to garden
- Large living room with granite fireplace
- Two additional reception rooms used as study & playroom
- Four good size bedrooms, two bathrooms
- Fully renovated throughout & beautifully presented
- Very large lawned gardens with fruit trees
- Single garage plus ample parking
- Peaceful location on quiet green lane in St Peter with lovely walks on your doorstep
- Sole agent
- Please contact Joanna 07797887751 / joanna@broadlandsjersey.com



La Preterie, La Preterie

St. Peter, Jersey

Beautifully renovated country home in peaceful St Peter setting.

Tucked away along a peaceful green lane in St Peter, this beautifully presented detached home enjoys a wonderful countryside setting surrounded by open greenery and scenic walks. Fully renovated throughout, the property has been thoughtfully modernised while retaining a sense of warmth and character, making it the perfect home for family life.

The heart of the home is the stunning kitchen/diner, featuring a vaulted ceiling and two sets of bi-folding doors that open onto the garden, creating a lovely light-filled space ideal for entertaining or relaxed everyday living. This flows through to the large living room, complete with a large granite fireplace, offering a cosy yet spacious retreat, while two additional reception rooms provide great flexibility for those needing a study, playroom, or snug.

There are four well-proportioned bedrooms and two modern bathrooms, all beautifully finished and ready to move into. Externally, the property enjoys very generous lawned gardens with fruit trees, a single garage, and ample parking.

Peaceful and private yet conveniently located for lovely walks, local schools and amenities at St Peters or St Ouen's Villages, this is a truly special home that perfectly blends countryside living with modern comfort.





Living

The heart of the home is the stunning kitchen/diner, featuring a vaulted ceiling, bi-folding doors opening onto the garden, and plenty of space for family living and entertaining. The large living room includes a feature granite fireplace, while two additional reception rooms provide flexible space currently used as a study and playroom.

Sleeping

There are four good size bedrooms and two modern bathrooms, all beautifully presented and finished in neutral tones.

Outside

Very large lawned garden with plenty of space for entertaining and children to play. Single garage plus ample parking for multiple cars on the driveway.

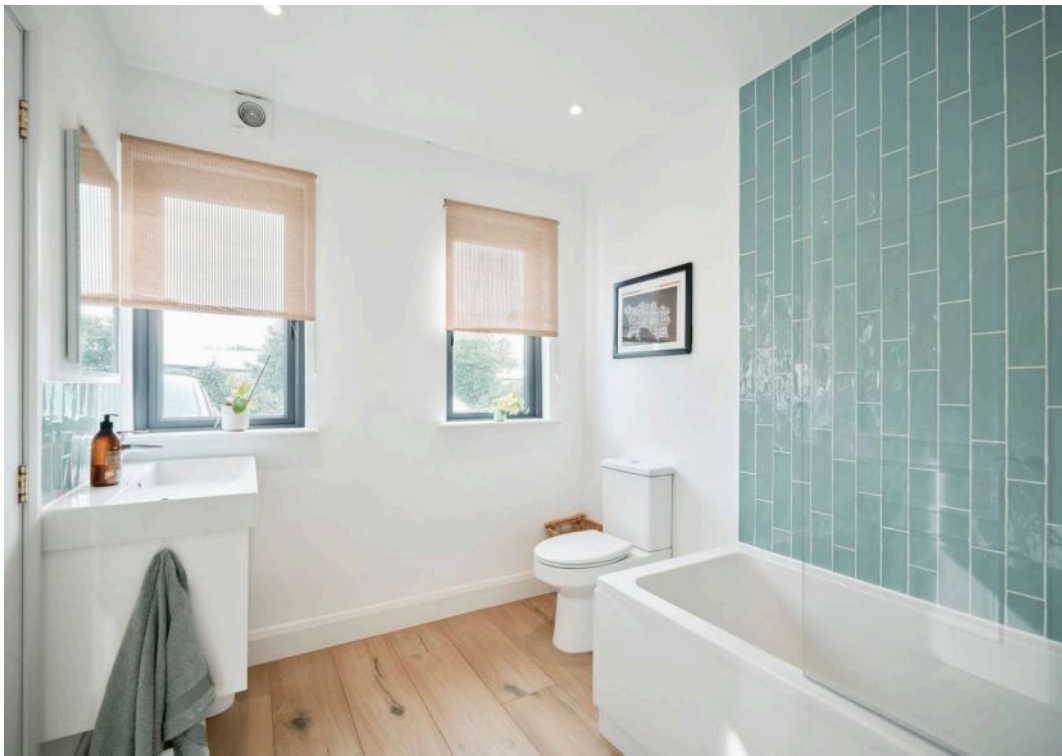
Services

Wet electric under floor heating. Borehole water & septic tank.

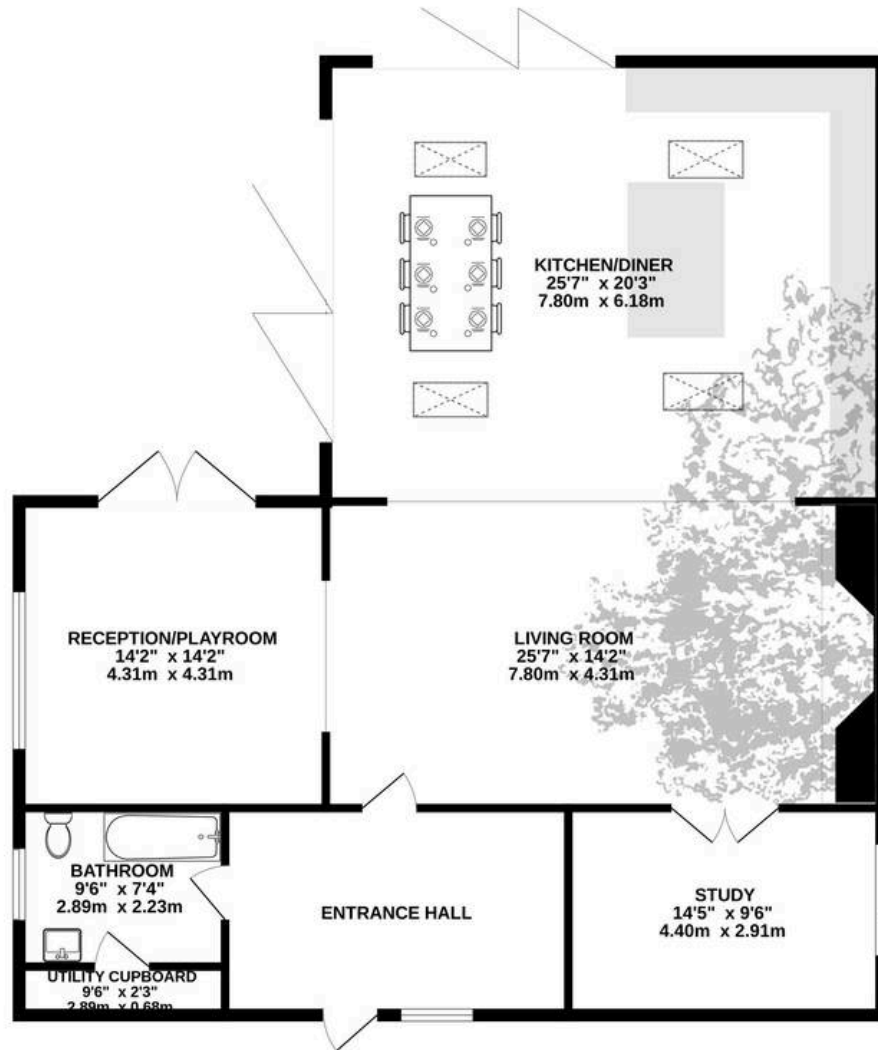
Plans Approved

Plans have been approved to extend into the garage if desired, to create a utility room, gym & shower room with additional bedroom & en-suite bathroom above.

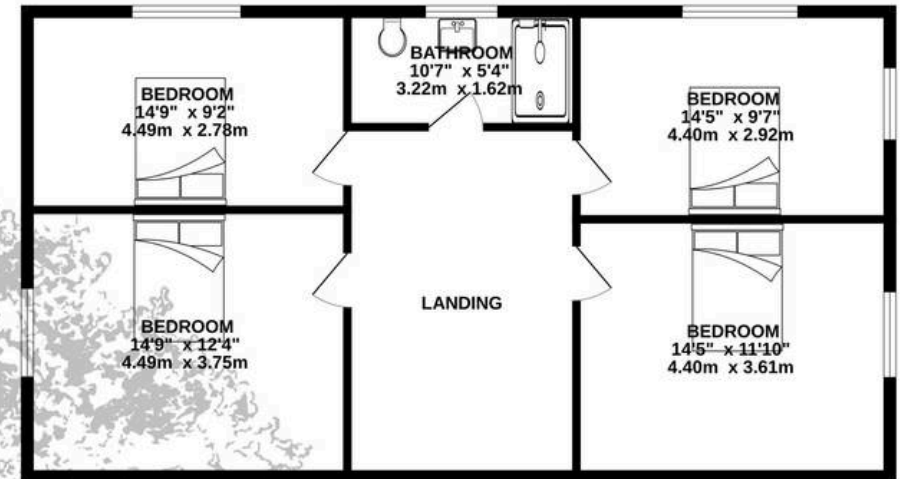




GROUND FLOOR
1426 sq.ft. (132.4 sq.m.) approx.



1ST FLOOR
851 sq.ft. (79.1 sq.m.) approx.



TOTAL FLOOR AREA : 2277 sq.ft. (211.5 sq.m.) approx.

Whilst every attempt has been made to ensure the accuracy of the floorplan contained here, measurements of doors, windows, rooms and any other items are approximate and no responsibility is taken for any error, omission or mis-statement. This plan is for illustrative purposes only and should be used as such by any prospective purchaser. The services, systems and appliances shown have not been tested and no guarantee as to their operability or efficiency can be given.
Made with Metropix ©2025



Broadlands

Broadlands Estates, Library Place - JE2 3NL

01534 880770 • enquiries@broadlandsjersey.com • www.broadlandsjersey.com/

BROADLANDS

FINDING YOU A HOME SINCE 1972