



19 Young Crescent, Sutton-In-Ashfield - NG17 5GF

Guide Price £160,000

DavidJames
the estate agent



19 Young Crescent

Sutton-In-Ashfield, Sutton-In-Ashfield

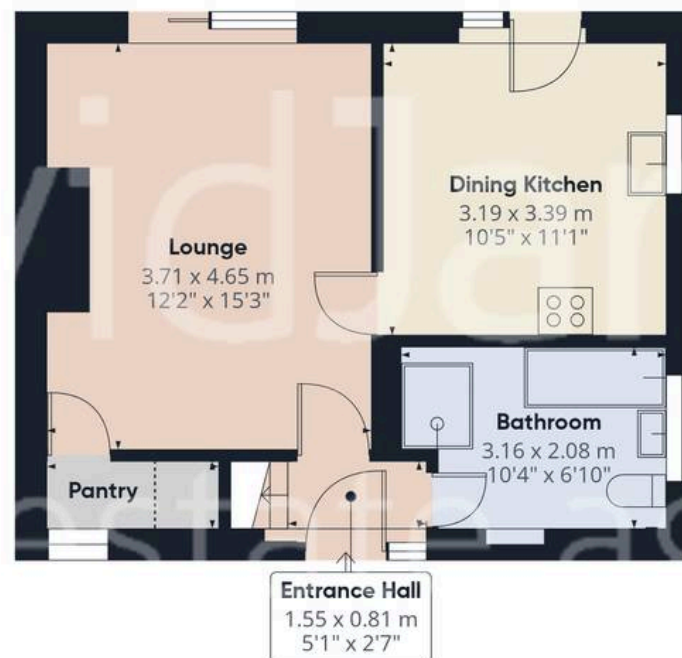
3 bed semi-detached family home offered with no chain! Ideally positioned for access to Sutton-in-Ashfield's excellent amenities, schools and transport links with parking for multiple vehicles! Council Tax band: A

Tenure: Freehold

- Semi-detached family home
- Offered to the market with no upward chain
- Within easy reach of Sutton-in-Ashfield's excellent nearby amenities, supermarkets and variety of schools
- Close to frequent bus and train links to Nottingham City Centre and the surrounding areas
- Bright lounge with a feature gas fire and patio doors to the garden
- Dining kitchen with a range of fitted units and space for freestanding appliances
- Ground floor four-piece bathroom (including both a bath and separate shower enclosure)
- Three first floor bedrooms
- Generous and established south-facing rear garden with lawn, mature planting and patio space
- Gated driveway, carport and further hardstanding provide off-street parking for multiple vehicles







Floor 0

Approximate total area⁽¹⁾

73 m²

786 ft²

Reduced headroom

0.5 m²

6 ft²



Floor 1

(1) Excluding balconies and terraces

Reduced headroom

Below 1.5 m/5 ft

Calculations reference the RICS IPMS 3C standard. Measurements are approximate and not to scale. This floor plan is intended for illustration only.

GIRAFFE360





David James Estate Agents

43 Forest Street, Sutton-in-Ashfield - NG17 1DA

01623 554084 • sutton@david-james.com • www.david-james.com