

Manor Way, Coppull

PR7 5FH



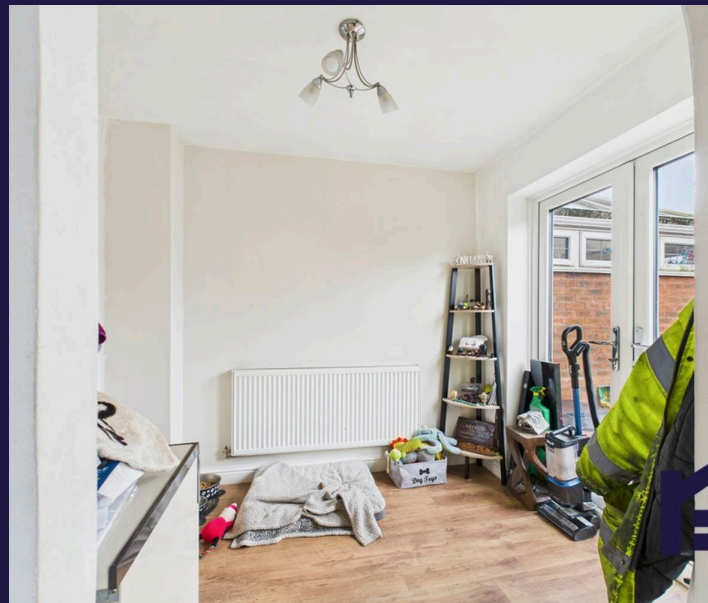


A cosy three-bedroom mews property offering stylish accommodation, allocated parking for one vehicles, and a private rear garden with patio. Prior to the current tenacy, the property was refurbished including new kitchen, en suite, and family bathroom. This attractive home is ideal for first time buyers or downsizers alike who are looking for a property that with minimal attention will be a perfect home.

The accommodation briefly comprises an entrance hallway with cloakroom, leading to a spacious lounge featuring a gas fire. To the rear of the property is a dining room opening into the fitted kitchen, with patio doors providing access to the private rear garden and patio area, ideal for entertaining and outdoor living.

To the first floor are three well-proportioned bedrooms, including a master bedroom with en suite shower room. A modern family bathroom serves the remaining bedrooms.

Externally, the property benefits from off-road parking for one vehicle and a private enclosed rear garden with patio.



A cosy three-bedroom mews property offering stylish accommodation, allocated parking for one vehicle, and a private rear garden with patio. Prior to the current tenancy, the property was refurbished including new kitchen, en suite, and bathroom. This attractive home is ideal for first time buyers or downsizers alike looking for a property that with minimal attention will be a perfect home.

Council Tax band: B

Tenure: Freehold

EPC Energy Efficiency Rating: C

- Modern three bedroom mews
- Available with vacant possession
- Recently fitted kitchen, en-suite and bathroom
- Cul-de-sac location



HOME  TRUTHS

Eccleston Branch

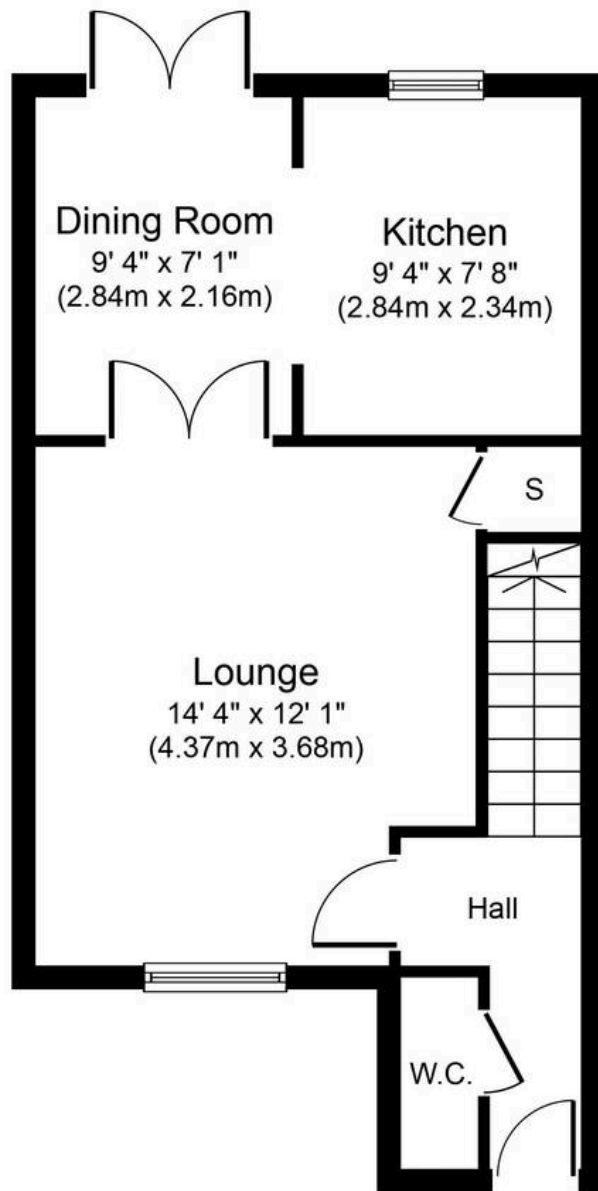
265 The Green, Eccleston, PR7 5TF
01257 451673

Coppull Branch

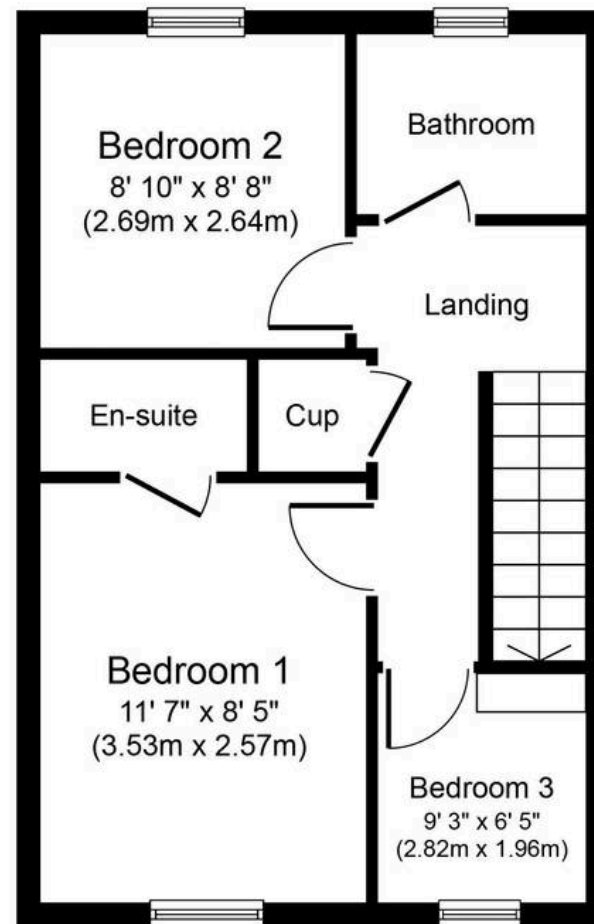
244 Spendmore Lane, Coppull, PR7 5DE
01257 794588

www.hometruthslancs.co.uk
office@hometruthslancs.co.uk





Ground Floor
Approximate Floor Area
390 sq. ft.
(36.2 sq. m.)



First Floor
Approximate Floor Area
362 sq. ft.
(33.6 sq. m.)

Whilst every attempt has been made to ensure the accuracy of the floor plan contained here, measurements of doors, windows, rooms and any other items are approximate and no responsibility is taken for any error, omission, or mis-statement. This plan is for illustrative purposes only and should be used as such by any prospective purchaser or tenant. The services, systems and appliances shown have not been tested and no guarantee as to their operability or efficiency can be given.