



2, 29 Belmont Road, St Helier  
£375,000

**BROADLANDS**  
FINDING YOU A HOME SINCE 1972

## 2, 29 Belmont Road

St Helier, Jersey

- Well presented duplex apartment with large garden
- Living room with doors leading to the garden
- Separate eat-in kitchen
- Two good size bedrooms
- Fully enclosed garden - perfect for entertaining
- Good location set back from the road on the town outskirts
- Sole agent
- Please contact Joanna 07797887751 / [joanna@broadlandsjersey.com](mailto:joanna@broadlandsjersey.com)



## 2, 29 Belmont Road

St Helier, Jersey

Well-presented duplex apartment with a large private garden, within easy reach of town. In a convenient location on the outskirts of St Helier, the property combines convenience with a sense of privacy as it is completely set back from the road.

The home is arranged over two floors, with an eat-in kitchen, living room with double doors to the garden, two good size bedrooms and a bathroom - making it ideal for professionals, couples, or small families looking for a home with good outside space.





### **Living**

The ground floor features a bright living room with doors opening directly onto the garden, creating a seamless flow between indoor and outdoor living. A separate eat-in kitchen provides ample space for dining.

### **Sleeping**

Upstairs are two good-sized bedrooms, offering plenty of natural light and flexibility for a growing family, home office, or guest space.

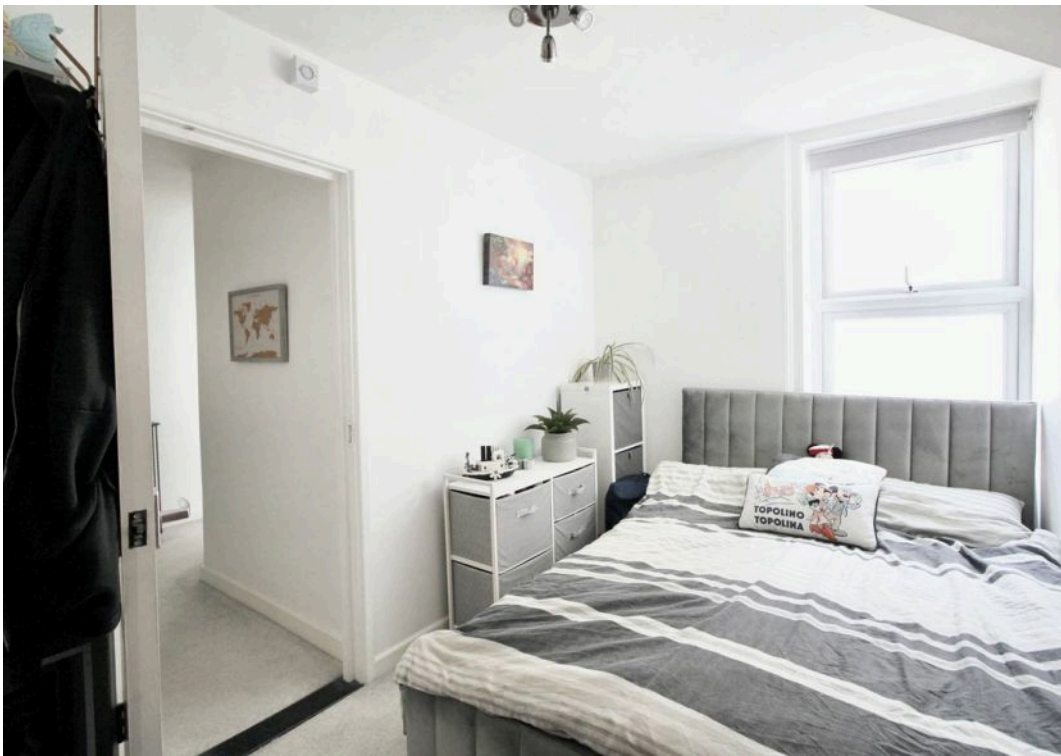
### **Outside**

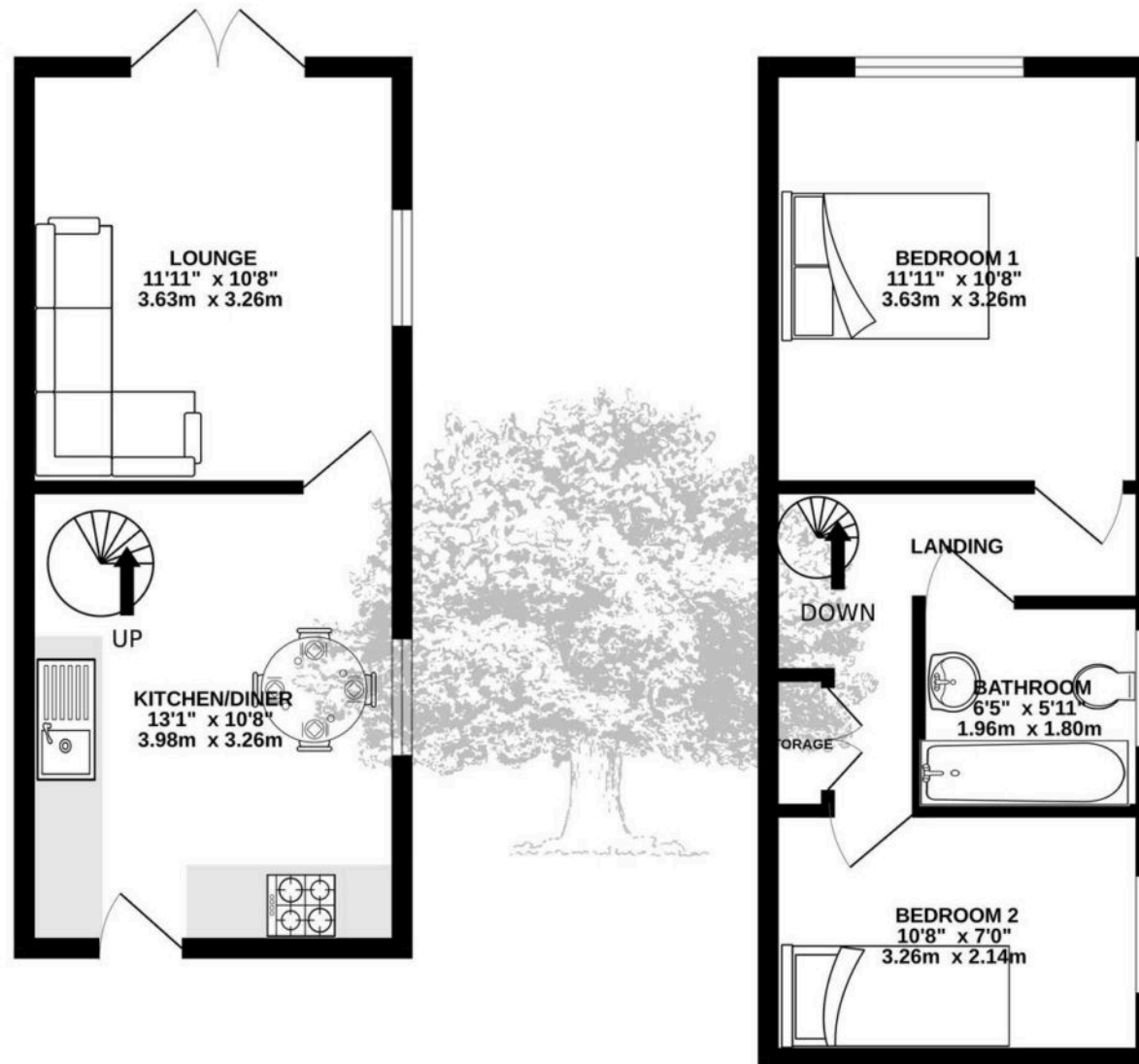
The fully enclosed garden is a real highlight – larger than average for this type of property and perfect for entertaining, children, or pets. Set back from the road, the location provides peace and privacy while still being just a short distance from town.

### **Services**

Fully double glazed. Electric heating.







TOTAL FLOOR AREA : 568 sq.ft. (52.8 sq.m.) approx.

Whilst every attempt has been made to ensure the accuracy of the floorplan contained here, measurements of doors, windows, rooms and any other items are approximate and no responsibility is taken for any error, omission or mis-statement. This plan is for illustrative purposes only and should be used as such by any prospective purchaser. The services, systems and appliances shown have not been tested and no guarantee as to their operability or efficiency can be given.

Made with Metropix ©2025



## Broadlands

Broadlands Estates, Library Place - JE2 3NL

01534 880770 • [enquiries@broadlandsjersey.com](mailto:enquiries@broadlandsjersey.com) • [www.broadlandsjersey.com/](http://www.broadlandsjersey.com/)

# BROADLANDS

FINDING YOU A HOME SINCE 1972