



Flat 11, Harlands House, Haywards Heath RH16 1LA  
£245,000



# Flat 11

Harlands House Harlands Road, Haywards Heath

A modern and spacious two double bedroom apartment, situated in the heart of Haywards Heath town centre. The property is presented to the market with no onward chain and would make an ideal first time or investment purchase. Internally, the property benefits from a spacious entrance hall, offering ample built in storage. The hallway leads through to a bright and spacious lounge with patio doors to the rear flooding the room with light and leading onto a good sized balcony. The kitchen is a separate and boasts a range of built in appliances, with space for more. In addition to this, there is a master bedroom, offering a range of built in wardrobe space and a modern en-suite shower room. There is also an equally spacious second double bedroom, which also benefits from built in wardrobe space. The internal accommodation is complete with a modern white suite family bathroom with both bath and shower facilities. Externally, the property is positioned within an enviable gated development, with an allocated parking space. Whilst the block itself has secure telephone entry system, with stairs and a lift to all floors. With unrivalled access to the town centre, mainline train station, and a range of shops and supermarkets, this is an ideal first time or investment purchase.

Council Tax band: C

Tenure: Leasehold

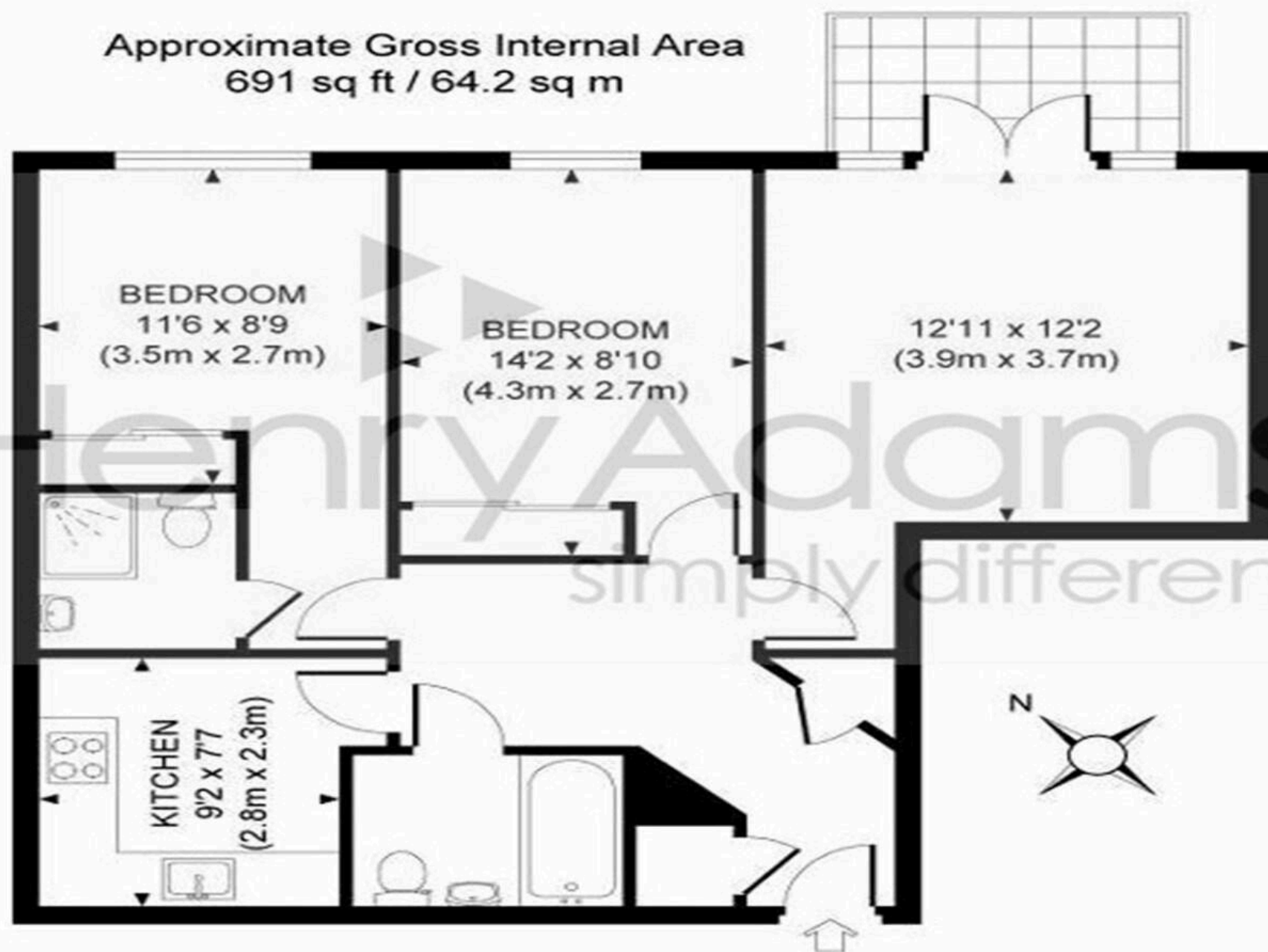
EPC Energy Efficiency Rating: B

EPC Environmental Impact Rating:

- Two Double Bedroom Modern Apartment
- Master Bedroom With En-Suite



Approximate Gross Internal Area  
691 sq ft / 64.2 sq m







## Henry Adams - Haywards Heath

Henry Adams HRR Ltd, 1 Park Parade,, Haywards Heath - RH16 4LX

01444 458380

[haywardsheath@henryadams.co.uk](mailto:haywardsheath@henryadams.co.uk)

[www.henryadams.co.uk/](http://www.henryadams.co.uk/)

Agents Note - Our particulars are for guidance only and are intended to give a fair overall summary of the property. They do not form part of any contract or offer, and should not be relied upon as a statement or representation of fact. Measurements, areas and distances are approximate only. Photographs may include lifestyle shots and pictures of local views. No undertaking is given as to the structural condition of the property, or any necessary consents or the operating ability or efficiency of any service, system or appliance. Please ask if you would like further information, especially before you travel to the property.