



15 Appleton Gardens, Nottingham – NG3 5NT

Guide Price £165,000

DavidJames
the estate agent



15 Appleton Gardens

Nottingham, Nottingham

Modern first-floor apartment ideally located within easy reach of Mapperley's vibrant amenities! Presenting open plan living space, 2 double beds, an en-suite and bathroom plus allocated parking!

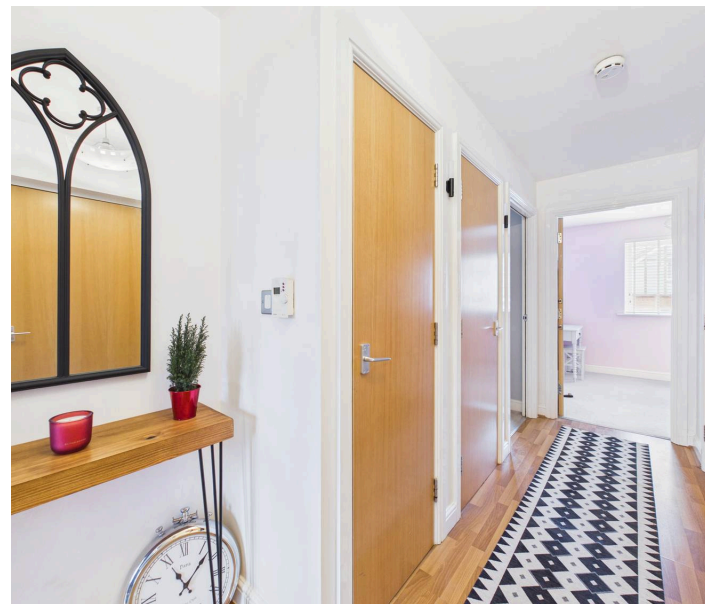
Council Tax band: C

Tenure: Leasehold

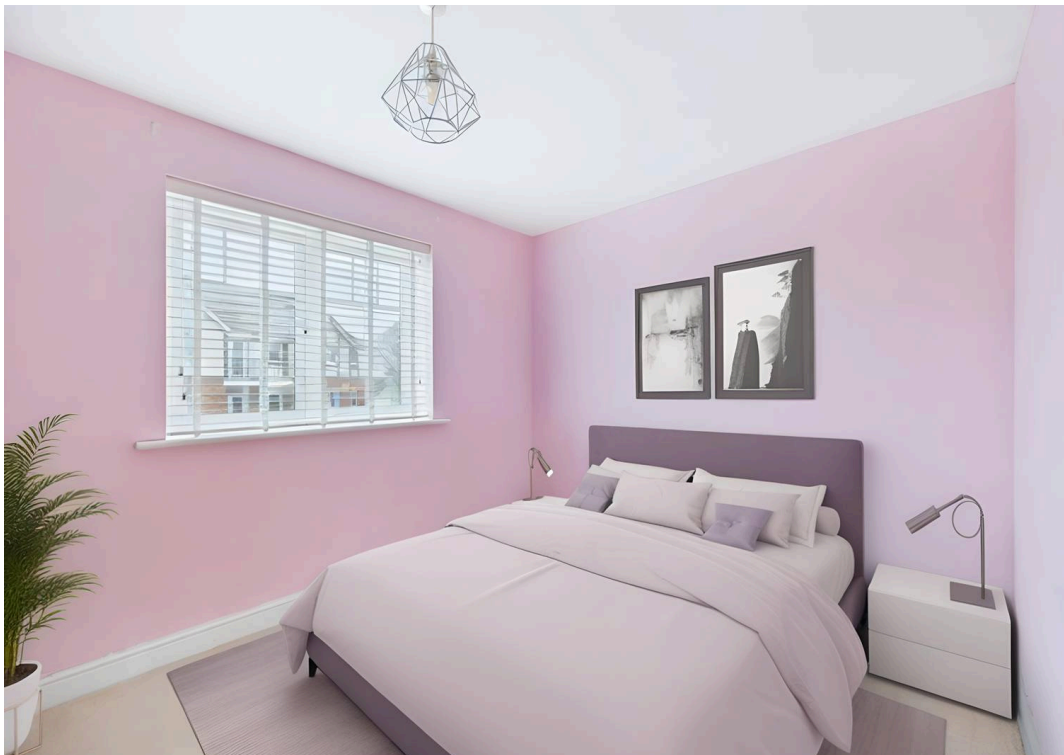
EPC Energy Efficiency Rating: C

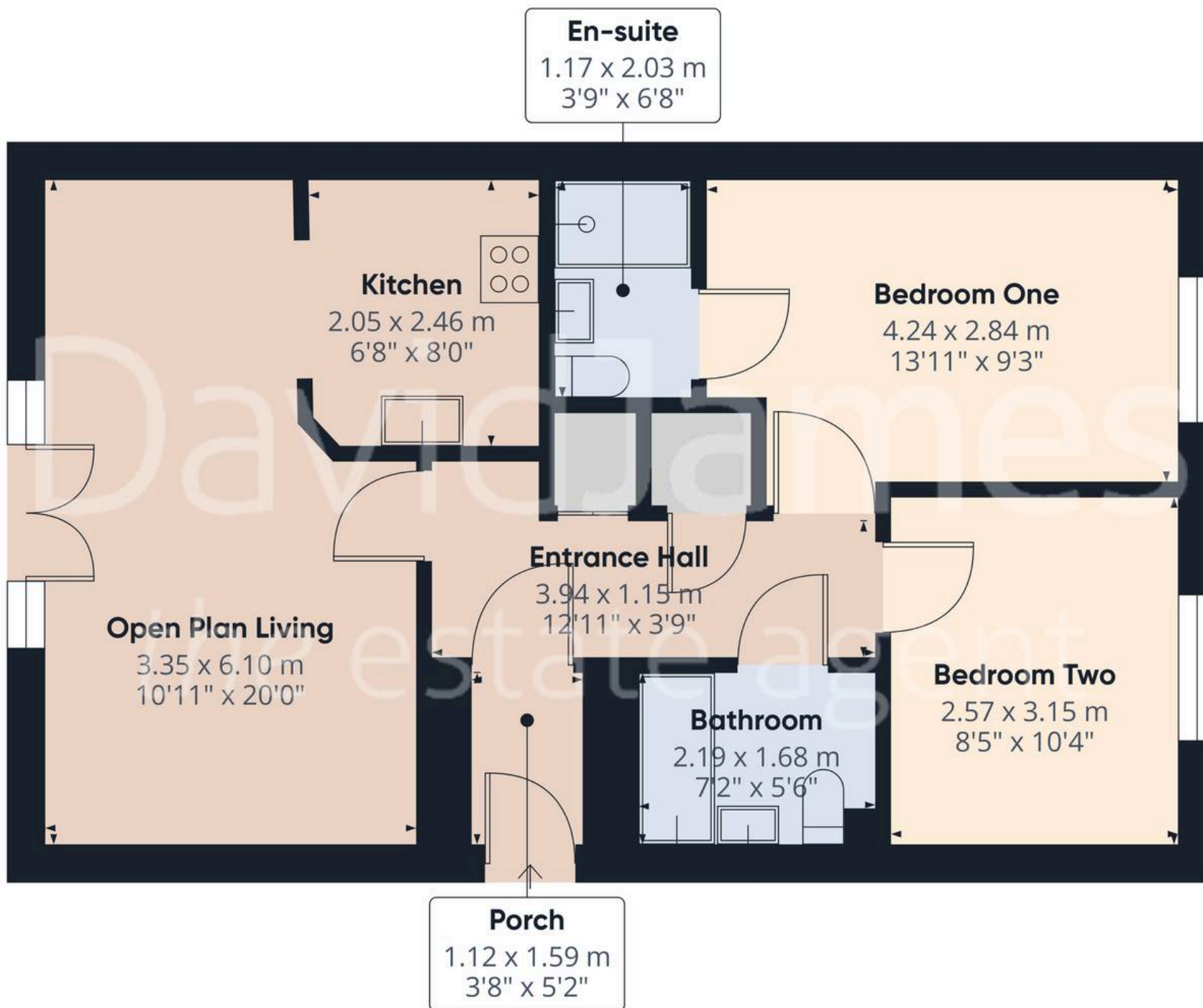
EPC Environmental Impact Rating:

- Modern first floor apartment
- Ideally positioned for access to Mapperley's nearby vibrant amenities
- A short walk from Nuffield Health gym, local pubs and transport links to the City
- Perfect for first-time buyers, investors or those seeking excellent connectivity
- Initial welcoming entrance hall with useful storage and an intercom system
- Bright open-plan lounge/dining room with a feature Juliet balcony
- Fitted kitchen with a range of integrated appliances
- Two double bedrooms (main bedroom with an en-suite shower room)
- Main bathroom with a three-piece white suite
- Allocated parking space with further communal visitor spaces









Approximate total area⁽¹⁾

57.1 m²
615 ft²

(1) Excluding balconies and terraces

While every attempt has been made to ensure accuracy, all measurements are approximate, not to scale. This floor plan is for illustrative purposes only.

Calculations are based on RICS IPMS 3C standard.

GIRAFFE360



David James Estate Agents

David James Estate Agents, 45B Plains Road – NG3 5JU

0115 962 4213 • mapperley@david-james.com • www.david-james.com

These particulars are produced in good faith and are set out as a general guide only. Measurements are approximate and floor plans are for illustrative purposes only. Services have not been tested. We have established professional relationships with third-party suppliers for the provision of services to Clients, details of which can be found on the property listing page on our website.