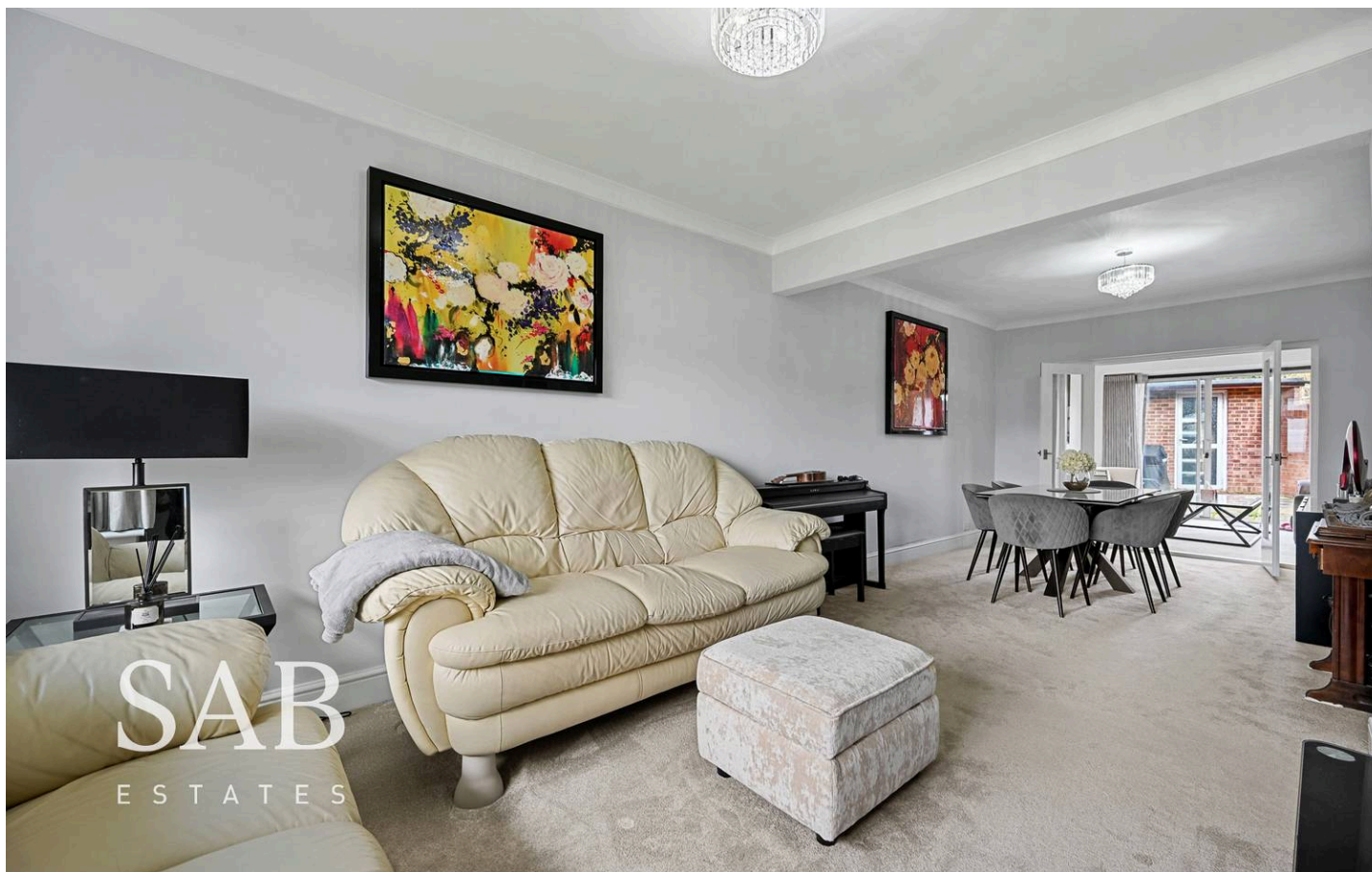




Woodstock Avenue, Southall  
£725,000

**SAB**  
ESTATES





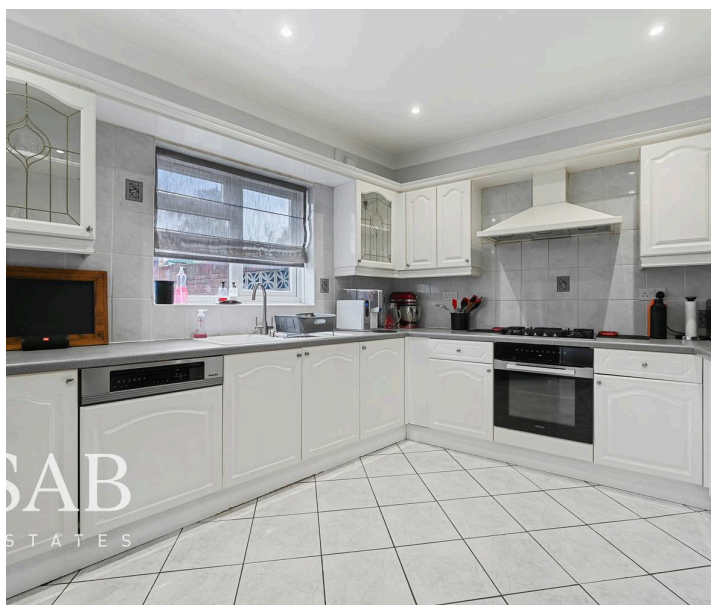
## Woodstock Avenue

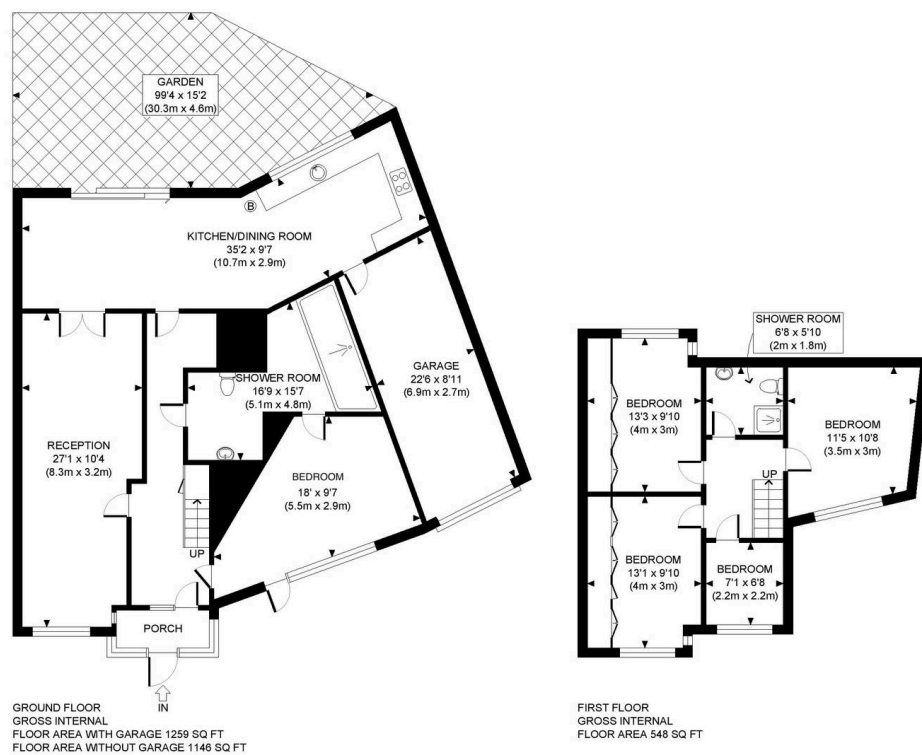
Southall

- Extended 5-Bed Semi-Detached
- Driveway for Four Cars
- Garage
- Complete Chain
- Close to Local Amenities
- Modern Ground Floor Shower Room
- Excellent Condition Throughout
- Great Transport Links

Council Tax band: D

Tenure: Freehold





APPROX. GROSS INTERNAL FLOOR AREA WITH GARAGE: 1807 SQ FT/ 168 SQM  
 APPROX. GROSS INTERNAL FLOOR AREA WITHOUT GARAGE: 1694 SQ FT/ 157 SQM

This plan is for illustrative purposes only and should be used as such by any prospective client. Whilst every attempt has been made to ensure the accuracy of the Floor Plan contained here, measurements of the doors, windows, rooms and any other items are approximate and no responsibility is taken for any errors, omissions, or misstatement. The services, systems and appliances shown have not been tested and no guarantee as to the operability or efficiency can be given.







**SAB Estates**

236-238 Ruislip Road, Greenford - UB6 9RS

020 8575 2929 • [info@sabestates.com](mailto:info@sabestates.com) • [www.sabestates.com/](http://www.sabestates.com/)