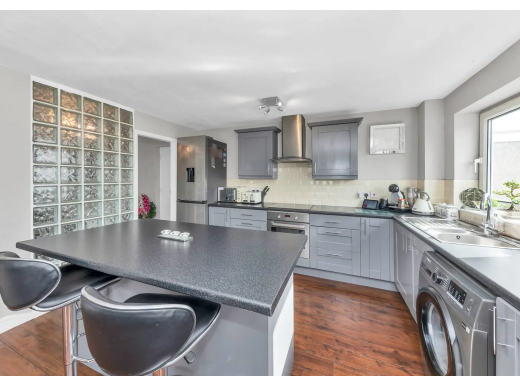


Highmill, Ware

£280,000 Leasehold



- Superbly Presented Top Floor Apartment
- Popular Kingshill Development
- Beautifully Presented Throughout
- Spacious Open-Plan Kitchen/Living Room
- Well-Appointed 4-Piece Bathroom Suite

- Excellent Low Maintenance Roof Terrace
- Residents Parking & Garage En-Bloc
- Lovely Far-Reaching Views
- Perfect First-Time/Investment Purchase
- Walking Distance of Amenities

