



Northwood, La Grande Route De St. Clement, St. Clement  
£665,000

**BROADLANDS**  
FINDING YOU A HOME SINCE 1972



# Northwood, La Grande Route De St. Clement

St. Clement, Jersey

- Well presented 3 bedroom family home
- 2 receptions
- Fantastic kitchen/breakfast room
- House bathroom and downstairs cloakroom
- Plans passed to extend and create a further reception
- 2 parking
- No onward chain
- Great size garden, ideal for entertaining
- Close to the beach, schools and a short commute to work
- Call Doug on 07700702585 or [doug@broadlandsjersey.com](mailto:doug@broadlandsjersey.com)





# Northwood, La Grande Route De St. Clement

St. Clement, Jersey

This well presented three bedroom semi-detached family home is ready to welcome its new owners with no onward chain, offering a fantastic blend of comfort and convenience. Step inside to find two spacious reception rooms, and a fantastic kitchen/breakfast room that is sure to become the heart of the home. The property features a modern house bathroom upstairs as well as a downstairs cloakroom for added practicality. Plans have already been passed to extend, giving you the exciting opportunity to create even more living space to suit your needs. With two parking spaces, coming and going is always hassle-free. The location is hard to beat - just a short stroll to the beach for weekend adventures, close to excellent schools, and within easy reach of your daily journey to work. For further information or to arrange a viewing, please contact Doug on 07700702585 or [doug@broadlandsjersey.com](mailto:doug@broadlandsjersey.com).







### **Living**

Spacious lounge with double doors opening directly onto the garden, creating a seamless indoor-outdoor flow. Second reception room, ideal as a dedicated home office or quiet retreat. Modern, light-filled breakfast room, offering a bright and airy space for everyday dining. Stylish, contemporary kitchen fitted with a full range of high and low units, plus integrated appliances for a sleek finish. Convenient downstairs cloakroom, thoughtfully positioned for guests and day-to-day use.

### **Sleeping**

Two generous double bedrooms plus a well-proportioned single bedroom, ideal for a child's room, dressing room or study. House bathroom fitted with a modern three-piece suite, offering a clean and contemporary finish.

### **Services**

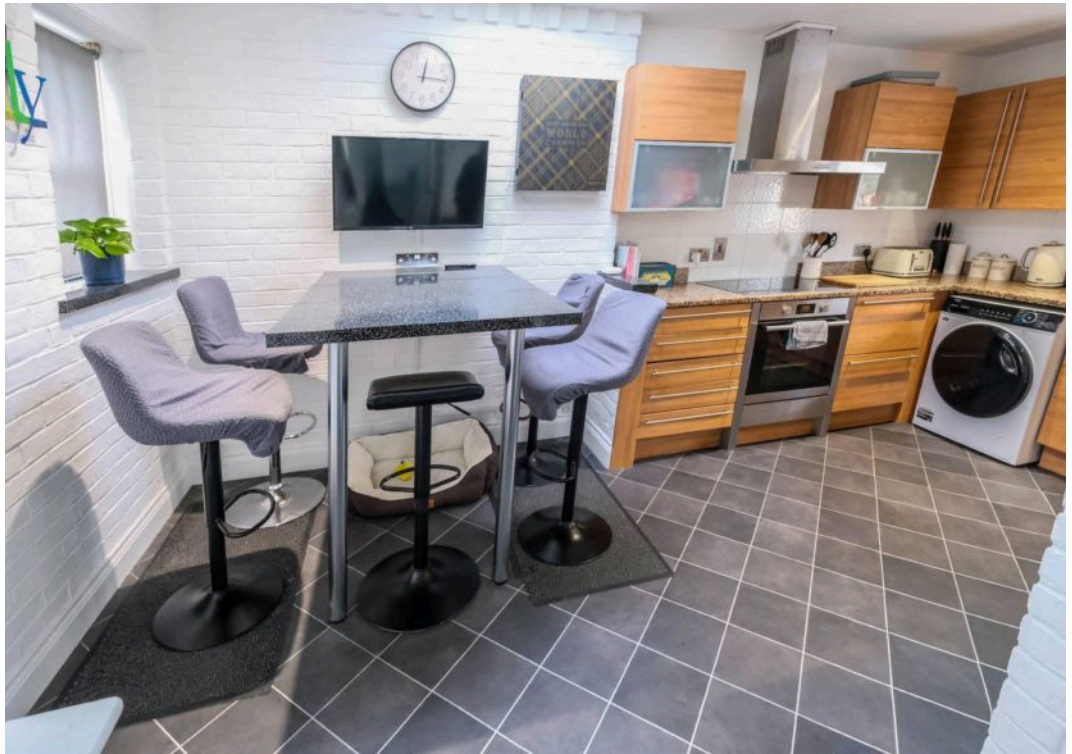
All main services.

### **Plans passed**

To create an additional reception, where the decked area is in the garden.

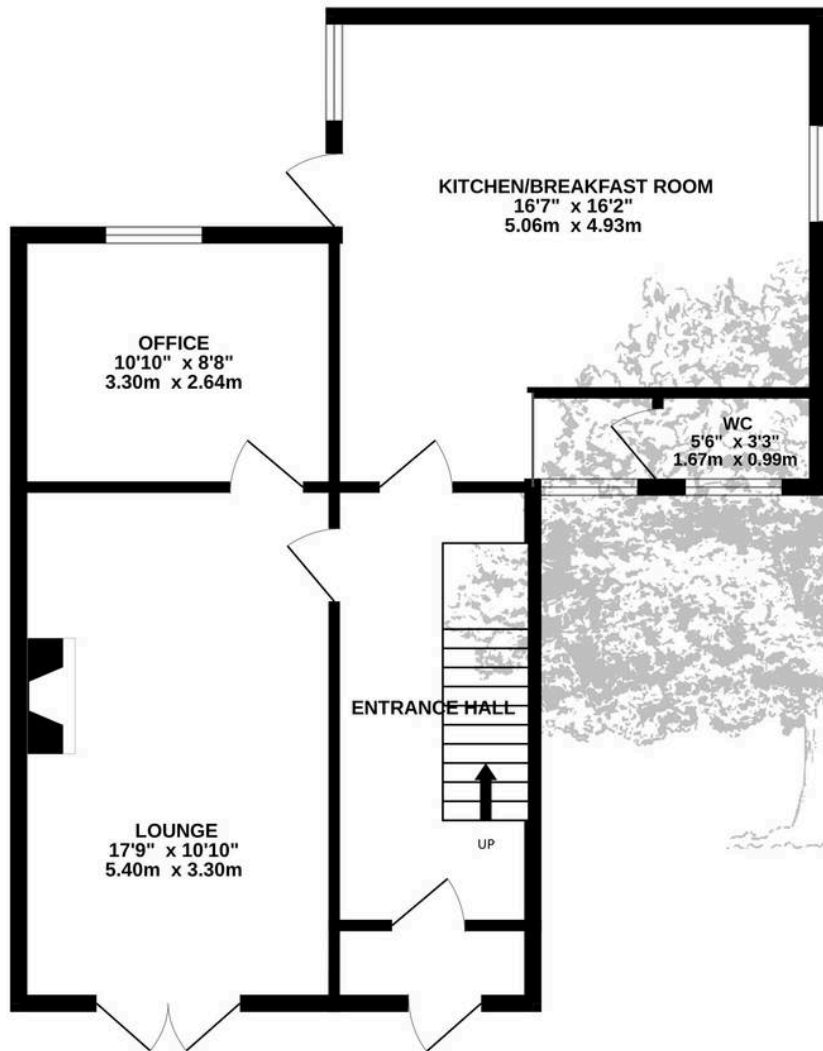




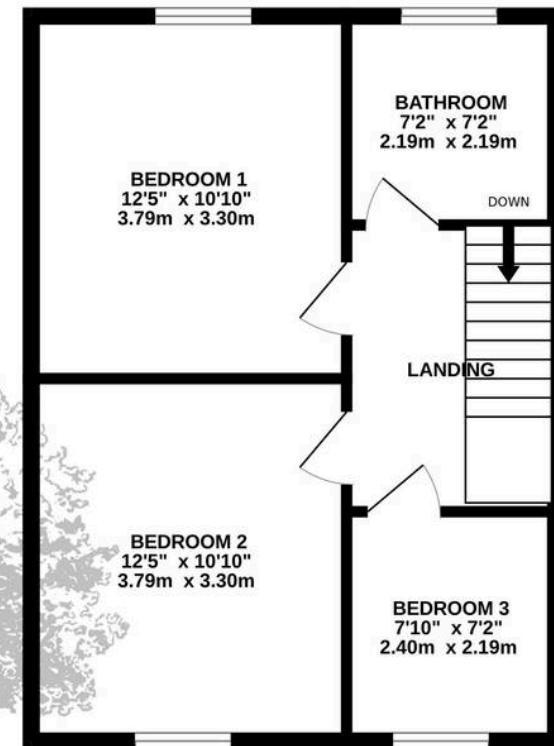




GROUND FLOOR  
668 sq.ft. (62.1 sq.m.) approx.



1ST FLOOR  
448 sq.ft. (41.6 sq.m.) approx.



TOTAL FLOOR AREA : 1116 sq.ft. (103.7 sq.m.) approx.

Whilst every attempt has been made to ensure the accuracy of the floorplan contained here, measurements of doors, windows, rooms and any other items are approximate and no responsibility is taken for any error, omission or mis-statement. This plan is for illustrative purposes only and should be used as such by any prospective purchaser. The services, systems and appliances shown have not been tested and no guarantee as to their operability or efficiency can be given.  
Made with Metropix ©2026



## Broadlands

Broadlands Estates, Library Place - JE2 3NL

01534 880770 • [enquiries@broadlandsjersey.com](mailto:enquiries@broadlandsjersey.com) • [www.broadlandsjersey.com/](http://www.broadlandsjersey.com/)

# BROADLANDS

FINDING YOU A HOME SINCE 1972