



12 Wood Ride, Haywards Heath, West Sussex RH16 4NJ

Guide Price £400,000 – £450,000

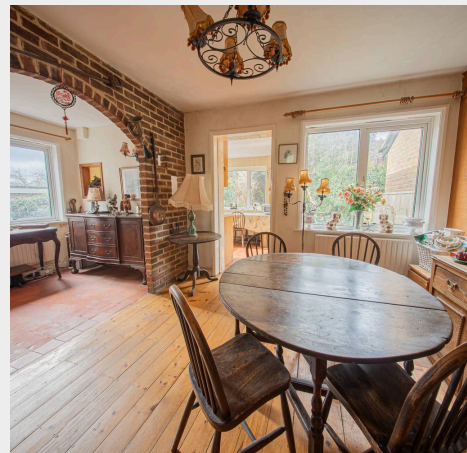


**MANSELL
McTAGGART**
Trusted since 1947



A 4/5 bedroom semi-detached house believed to date from the 1920s in need of complete renovation situated in this very popular residential neighbourhood just to the south of the town centre and Victoria Park within a 0.8 mile walk of the railway station. There is huge potential to create a beautiful family home in this well-established residential road.

- Family home in need of renovation throughout
- Character accommodation over three floors
- Lounge with fireplace, dining room, study area
- Separate kitchen – doorway leading through to garage
- 2 first floor bedrooms, cloakroom & bathroom
- 3 second floor bedrooms
- Driveway parking, front garden & garage
- 40' (approx) west facing rear garden
- Would suit someone looking for a project
- For sale with no onward chain
- EPC rating: D - Council Tax Band: D

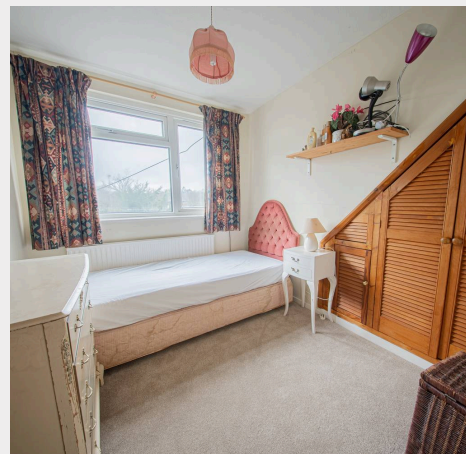
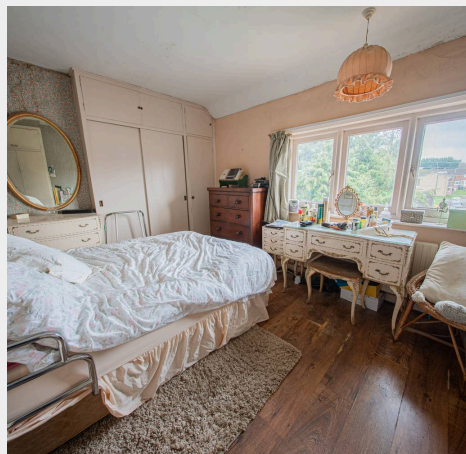


The property is situated in Wood Ride which runs between Park Road and Ashenground Road just south of Victoria Park. This established residential area is particularly popular with families and commuters as it is ideally placed within a very short walk of the town centre, Victoria Park, glorious woodland and just 0.8 of a mile of the railway station on foot via Victoria Park. The town has an extensive range of shops, stores, restaurants, cafes and bars, a leisure centre, numerous sports clubs and leisure groups. Schools are well represented and the property is within walking distance of several primary schools including St Wilfrid's, Warden Park Primary Academy, St Joseph's RC and Bolnore Village Primary, which is within a very pleasant walk through Ashenground Woods. Children from this side of town go onto Warden Park Secondary Academy School in neighbouring Cuckfield. Ashenground and Bolnore Woods provide some wonderful walks and the local area has numerous beauty spots including both Ditchling and Chailey Common nature reserves, the Ashdown Forest and the South Downs National Park.

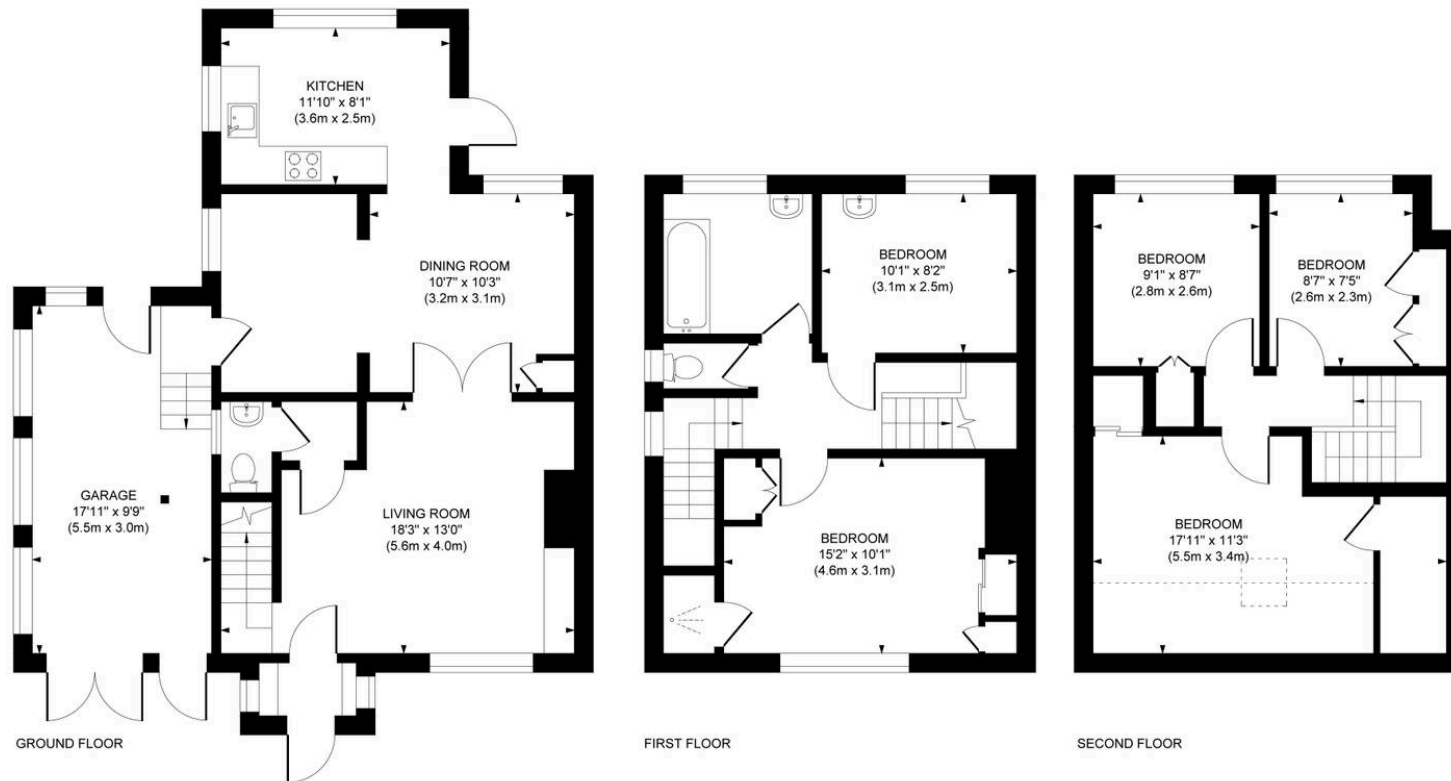
By road, access to the major surrounding areas can be gained via the A272 and the A/M23, the latter lying about 5.5 miles to the west at Bolney or Warminglid.

Distances in miles on foot (approximately)

Bolnore Villlage Primary (0.8), St Wilfrid's C of E Primary (0.75), Warden Park Primary Academy (0.7), St Joseph's RC (0.6), Warden Park Secondary Academy (1.8), Oathall Community College (1.3), St Pauls R C Secondary College (3.5), Haywards Heath Mainline Railway Station (0.9) - fast commuter services to London (Victoria/London Bridge 47 mins), Gatwick Airport (15 mins) and the south coast (Brighton 20 mins).



Approximate Gross Internal Area
1585 sq. ft / 147.27 sq. m



This plan is for layout guidance only. Not drawn to scale unless stated. Whilst every care is taken in the preparation of this plan, please check all dimensions, shapes and compass bearings before making decisions reliant upon them.

Mansell McTaggart Haywards Heath
Mansell McTaggart Estate Agents, 7 Muster Green South – RH16 4AP
01444 456431

hh@mansellmctaggart.co.uk

www.mansellmctaggart.co.uk/branch/haywardsheath

Consumer Protection from Unfair Trading Regulations 2008 We have not tested any apparatus, equipment, fixtures, fittings or services and so cannot verify that they are in working order or fit for purpose. You are advised to obtain verification from your solicitor or surveyor. References to the tenure of a property are based on information supplied by the seller. We have not had sight of the title documents and a buyer is advised to obtain verification from their solicitor. Items shown in photographs are not included unless specifically mentioned within the sales particulars, but may be available by separate negotiation.