



Ferme Park Road, London – N4 4DS
£3,250 pcm

**DAVID
ANDREW** | your
most
valuable
asset

This well-presented three double bedroom flat, spanning 84 sq m (905 sq ft), offers a welcoming and comfortable living environment located ten-minute walk away from Finsbury Park Station.

The spacious reception room is filled with natural light, enhanced by double glazed windows that create a bright and airy atmosphere throughout. Carpeted floors add warmth and comfort, while the separate fully fitted kitchen provides ample space for meal preparation and dining. Each bedroom is well-sized, ensuring plenty of room for furnishings and personal touches, and the flat benefits from excellent storage solutions to keep your living space organised. The property is currently undergoing refurbishment works. Updated photographs will be provided once the works have been completed.

Local amenities, including shops, cafes, and restaurants, are conveniently close by, offering a lively and connected lifestyle. Situated in a vibrant area, you are just a short walk from both Finsbury Park and Crouch Hill stations, making commuting and travel around London effortless. The property is offered unfurnished and will be available from the 14th of April.

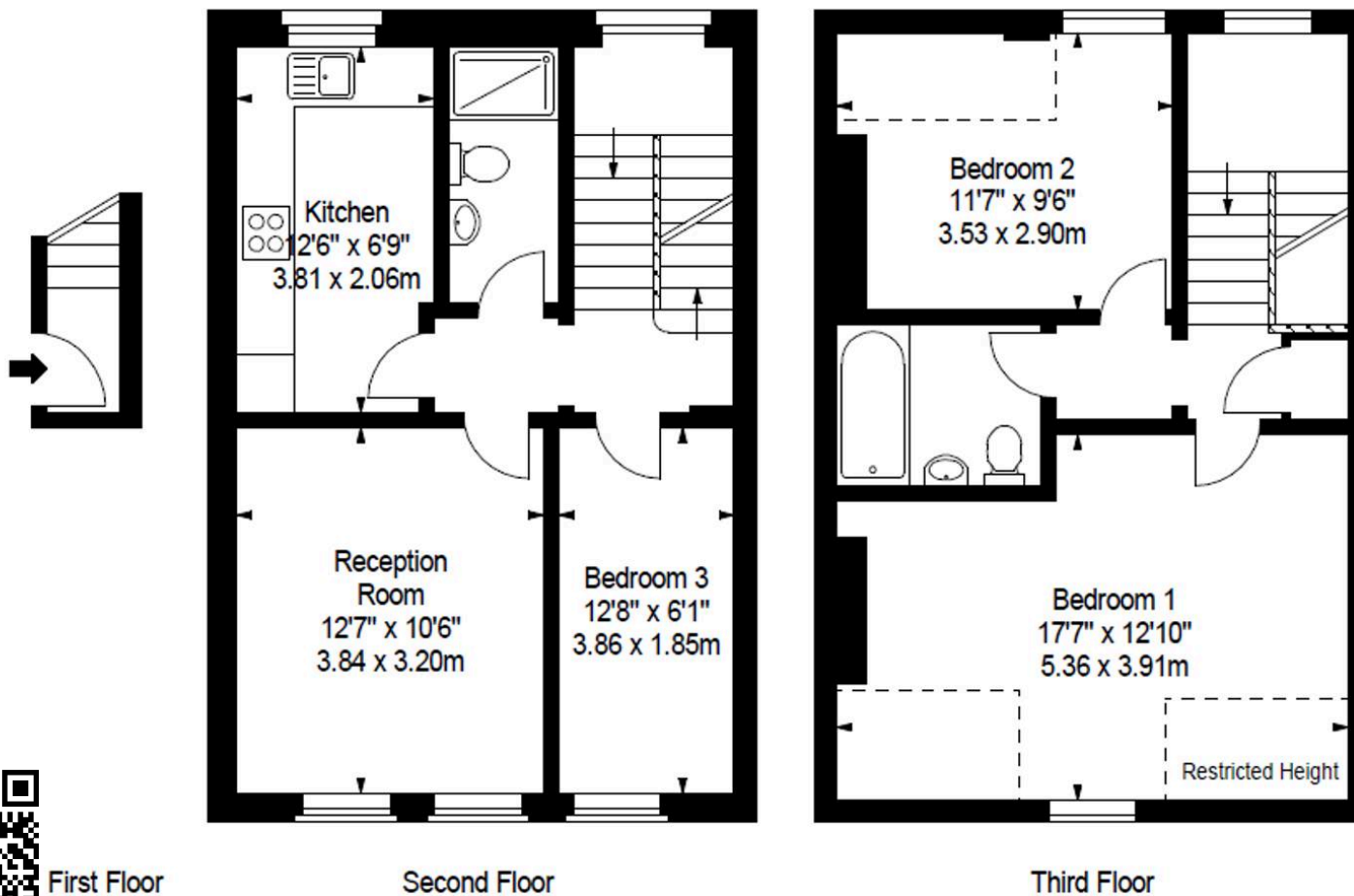
Council Tax band: C

- Three - Double Bedrooms Flat
- Comprising 84 sq mt / 905 sq ft
- Spacious Reception Room
- Carpeted Throughout
- Separate Fully Fitted Kitchen
- Double Glazed Windows
- Ample Storage
- Walking Distance to Finsbury Park and Crouch Hill Stations
- Offered Unfurnished
- Available 14th of April



FLAT B 19 FERME PARK ROAD, N4

Approx. Gross Internal Area *
905 Ft² - 84.08 M²



Archway Office

671 Holloway Road
London, N19 5SE

T (0)20 7619 3750

Highbury Office

90 Highbury Park
London, N5 2XE

T (0)20 7354 9111

Finsbury Park Office

167 Stroud Green Road
London, N4 3PZ

T (0)20 7281 2000

Property Management Office

235 Blackstock Road
London, N5 2LL

T (0)20 7354 9222

