



Enhanced with AI by STREET





## Langham House Close

### Ham Common

A beautifully presented 3 bedroom second floor apartment of approx. 777 sq ft with private balcony, set within the architecturally significant Langham House Close development at Ham Common. Designed by James Stirling & James Gowan in 1955–58, this bright and well-proportioned flat offers a generous reception/dining room, separate kitchen and modern bathroom, moments from Richmond Park, the Thames and local village amenities.

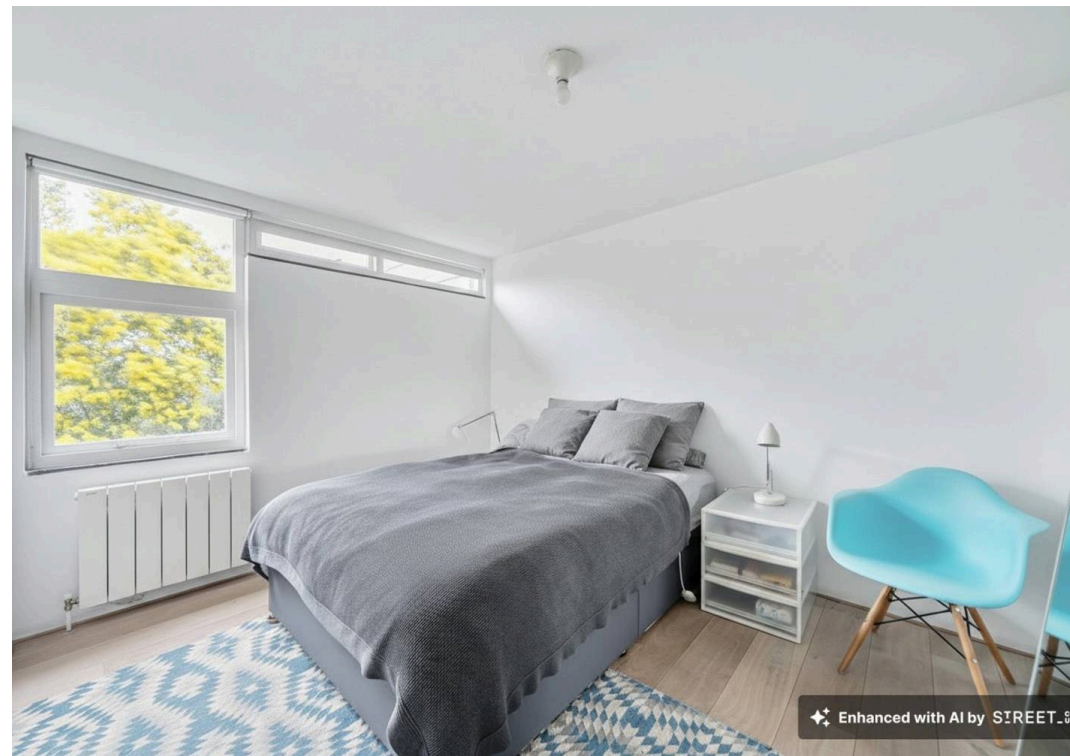
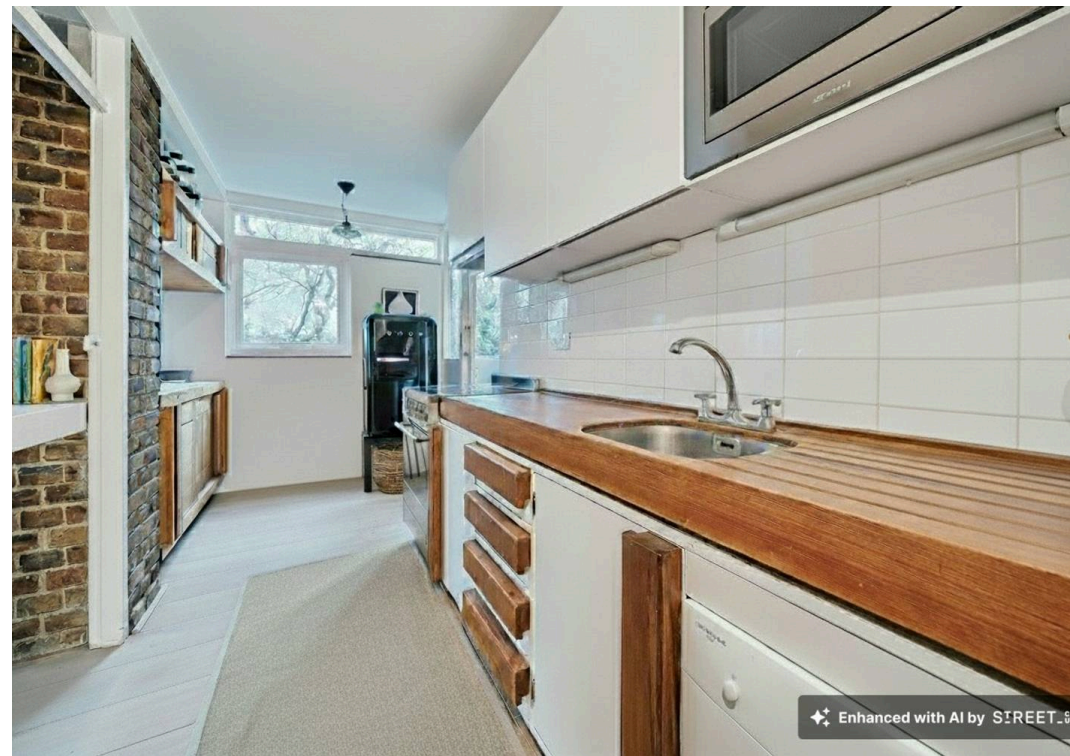
Council Tax band: E

Tenure: Share of Freehold

EPC Rating: E

- Architect-designed 3 BEDROOM second floor apartment (approx. 777 sq ft / 72.1 sq m)
- Private BALCONY overlooking mature trees and communal grounds
- Generous 19 ft reception / dining room with excellent natural light
- Set within the iconic Langham House Close development (1955–58)
- Moments from Ham Common, Richmond Park and the Thames towpath
- Close to Ham Parade shops and regular bus services to Richmond & Kingston





Langham House Close, Richmond, TW10

Approximate Area = 777 sq ft / 72.1 sq m  
For identification only - Not to scale

