



8 Astley Drive, Nottingham - NG3 3EU

Guide Price £170,000

DavidJames
the estate agent



8 Astley Drive

Nottingham, Nottingham

NO CHAIN! End-terrace home with two bedrooms, lounge, breakfast kitchen, enclosed lawned garden and driveway with double gates! An ideal first-time buy or investment purchase close to the City!

Council Tax band: B

Tenure: Freehold

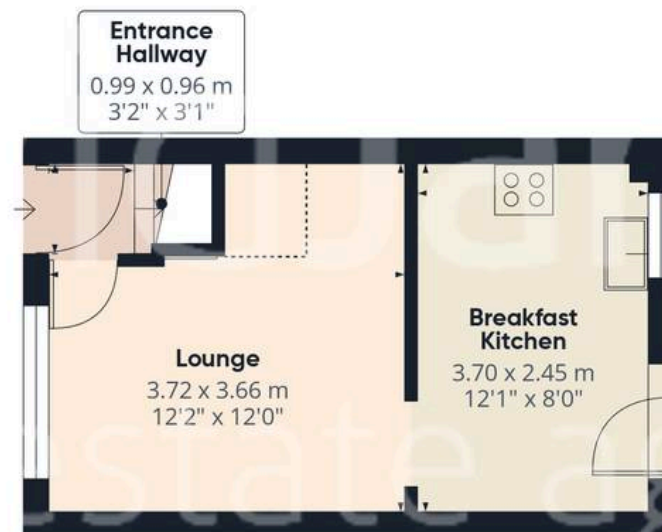
EPC Energy Efficiency Rating: D

EPC Environmental Impact Rating: D

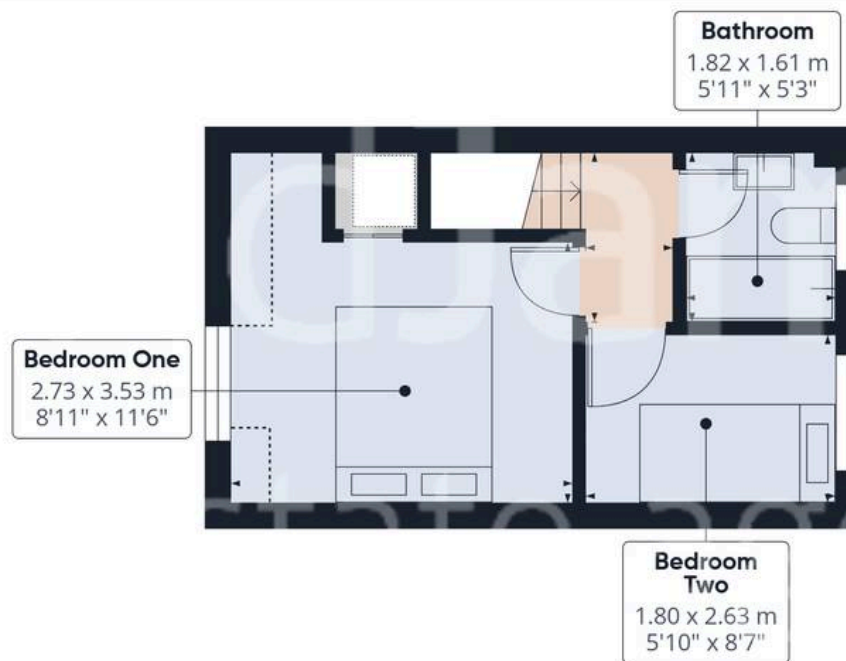
- End-terrace home offered to the market with no upward chain
- Ideal for first-time buyers, downsizers or investment purchasers
- Situated within easy reach of local amenities and transport links
- Lounge positioned to the front aspect
- Breakfast kitchen with space for informal dining
- Two bedrooms (main with built-in storage)
- Bathroom with white three-piece suite and electric shower
- Enclosed rear garden mainly laid to lawn
- Side tarmac driveway providing off-street parking
- Double timber gates offering potential for additional rear parking







Floor 0



Floor 1



Approximate total area⁽¹⁾

43.4 m²

466 ft²

Reduced headroom

1.7 m²

19 ft²

(1) Excluding balconies and terraces

Reduced headroom

Below 1.5 m/5 ft

Calculations reference the RICS IPMS 3C standard. Measurements are approximate and not to scale. This floor plan is intended for illustration only.

GIRAFFE360



David James Estate Agents

David James Estate Agents, 45B Plains Road – NG3 5JU

0115 962 4213 • mapperley@david-james.com • www.david-james.com

These particulars are produced in good faith and are set out as a general guide only. Measurements are approximate and floor plans are for illustrative purposes only. Services have not been tested. We have established professional relationships with third-party suppliers for the provision of services to Clients, details of which can be found on the property listing page on our website.