



**21 Arthur Milton Street, Bristol**  
**£525,000**

# 21 Arthur Milton Street

Bristol, Bristol

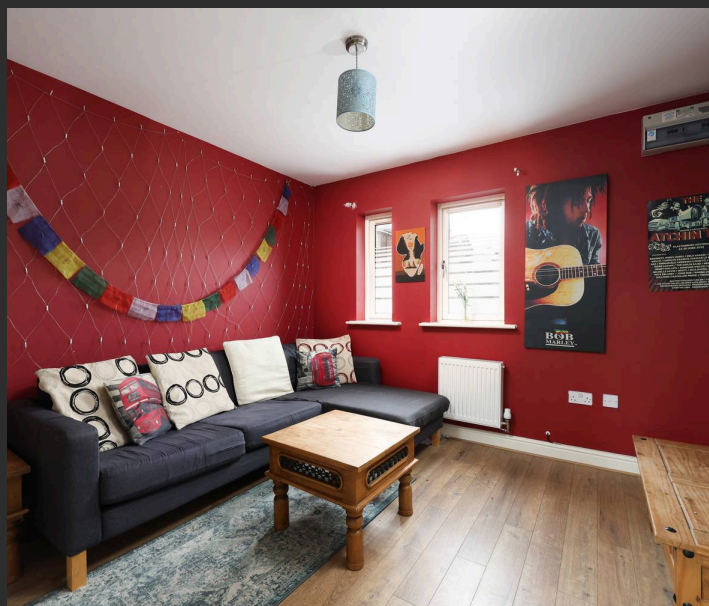
- No onward chain
- Modern Townhouse
- Kitchen/diner
- Four double bedrooms
- Ground floor W/C, family bathroom and shower room
- Allocated parking
- HMO licence
- Close to Gloucester Road
- APR for Brunel Fields
- 1196 sqft

Offered for sale with no onward chain, this impressive four double bedroom modern townhouse, offering versatile and spacious accommodation arranged over three floors.

Entering via the front door, the layout comprises a welcoming entrance hall providing access to all the ground floor accommodation and a downstairs W/C. The generously proportioned lounge is filled with natural light and offers ample space for furnishing. To the rear is a contemporary kitchen/diner, fitted with a range of sleek units and integrated appliances, providing a perfect setting for entertaining.

The property boasts four double bedrooms, each well-sized and spanning the full width of the property. The bedrooms are thoughtfully arranged to provide comfortable and flexible arrangements. The first floor further benefits a three-piece family bathroom, while the top floor offers a shower room.

Externally, the property provides a modern facade,




You can include any text here. The text can be modified upon generating your brochure.

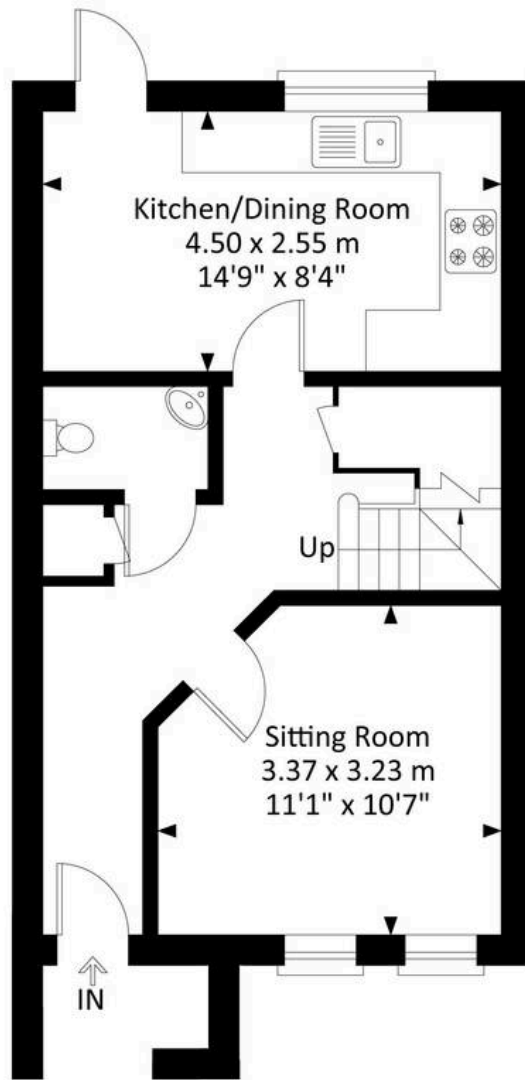


# 21 Arthur Milton Street, Ashley Down, Bristol, BS7 9EB

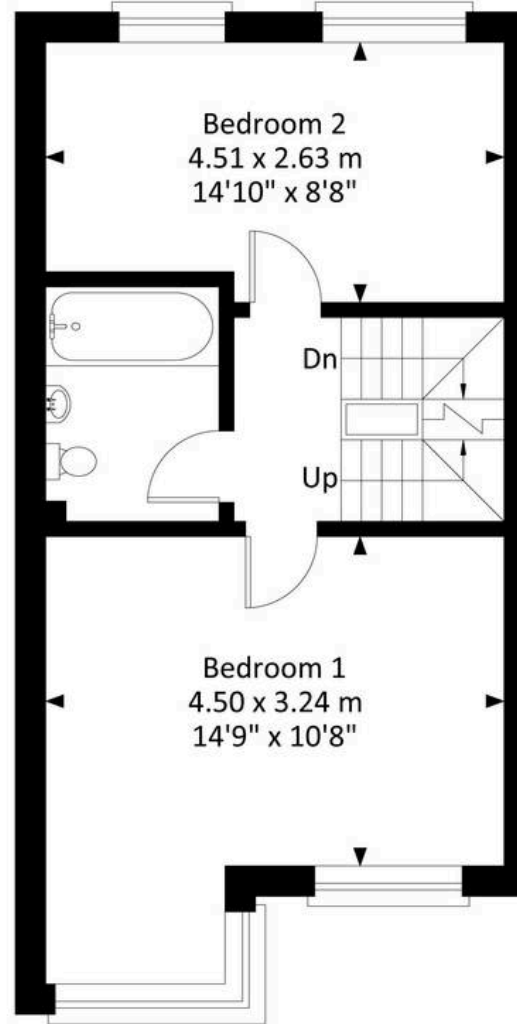
Approximate Gross Internal Area = 111.12 sq m / 1196.08 sq ft



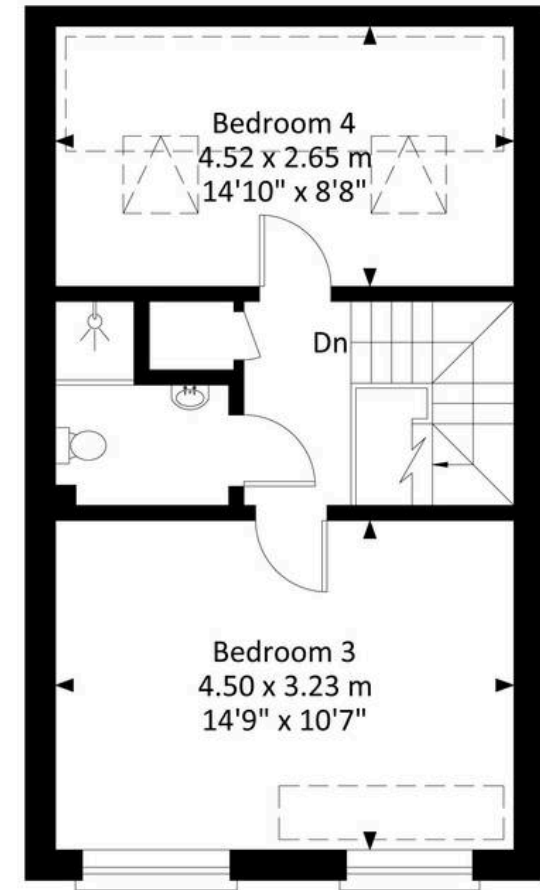
 = Reduced Head Height



Ground Floor



First Floor



Second Floor

Illustration for identification purposes only, measurements are approximate, not to scale.



## Elephant Estate Agents

Elephant, 2 The Promenade Gloucester Road - BS7 8AL

01173700556 • [bishopston@elephantlovesbristol.co.uk](mailto:bishopston@elephantlovesbristol.co.uk) • [www.elephantlovesbristol.co.uk/](http://www.elephantlovesbristol.co.uk/)