



25 Park Avenue, Woodborough – NG14 6EB

Guide Price **£550,000**



25 Park Avenue

Woodborough, Nottingham

Extended 4-bed semi-detached family home in Woodborough with stunning open-plan living spaces, main bedroom suite with balcony and a generous established garden plus multi-vehicle parking!

Council Tax band: D

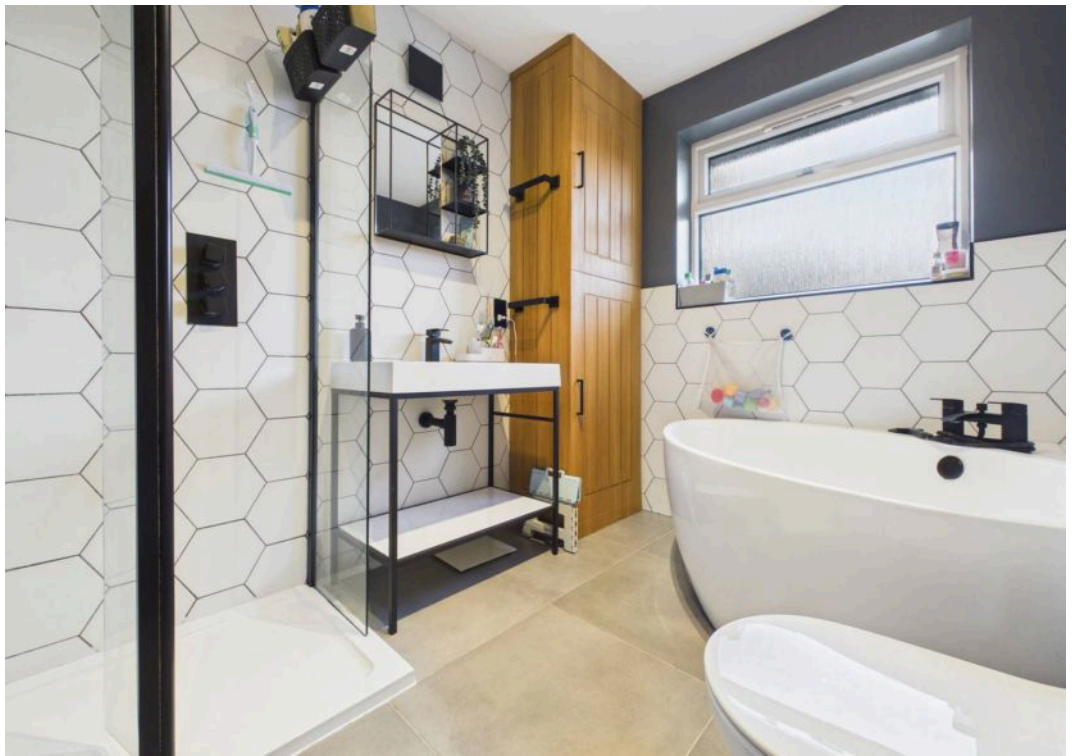
Tenure: Freehold

EPC Energy Efficiency Rating: C

EPC Environmental Impact Rating: D

- Substantial, stylish and extended semi-detached home
- Located in the highly sought-after village of Woodborough
- Exceptional open-plan living kitchen and adjoining dining space with vaulted ceilings, skylights and full-width bifolds
- Impressive additional family room with pitched roof and skylight plus a separate play room
- Convenient ground floor WC and utility room
- Main bedroom suite with a private balcony and a luxurious four-piece en-suite bathroom
- Three further well-proportioned bedrooms ideal for family living
- Contemporary family shower room with a double-width walk-in shower
- Generous block-paved driveway leading to an integral garage
- Enclosed garden to the rear with lawn and patio seating space







Floor 0

Approximate total area⁽¹⁾

222.2 m²

2392 ft²

Balconies and terraces

6.3 m²

68 ft²



Floor 1

(1) Excluding balconies and terraces

Calculations reference the RICS IPMS 3C standard. Measurements are approximate and not to scale. This floor plan is intended for illustration only.

GIRAFFE360





David James Estate Agents

David James Estate Agents, 45B Plains Road – NG3 5JU

0115 962 4213 • mapperley@david-james.com • www.david-james.com

These particulars are produced in good faith and are set out as a general guide only. Measurements are approximate and floor plans are for illustrative purposes only. Services have not been tested. We have established professional relationships with third-party suppliers for the provision of services to Clients, details of which can be found on the property listing page on our website.