



Station Road, Croston

PR26 9RL

£225,000



Spacious end modern mews in the heart of the village with three bedrooms, private rear garden, off road parking and garage. As well as being an excellent family home, this property currently benefits from stairlift access to the first floor and modern wet room. Available with no upward chain. To the front the garden is mainly laid to lawn bordered by mature planting with a pathway to the main entrance. Step into the hallway and from there to the lounge/dining room with plenty of natural light from windows to two elevations. The breakfast kitchen comprises a range of wall and base units with breakfast bar and space, power and plumbing for appliances. Externally the private rear garden is laid to lawn with seating areas and well stocked borders. There is gated access to the rear where you will find parking and garage which benefits from power supply. To the first floor are two double bedrooms with the smaller housing the Ideal combi boiler and a comfortable single. The wet room comprises non slip flooring, tiled elevations, floating wash hand basin, wc and electric shower. Within easy reach of village amenities, excellent schools and primary transport routes this is a lovely place to call home.

Spacious end modern mews in the heart of the village with three bedrooms, private rear garden, off road parking and garage. As well as being an excellent family home, this property currently benefits from stairlift access to the first floor and modern wet room. Available with no upward chain. Council Tax band: B

Tenure: Freehold

- Parking and garage
- No upward chain
- Three bedrooms
- Wet room
- Close to village amenities
- Media tour



Eccleston Branch

265 The Green, Eccleston, PR7 5TF
01257 451673

Coppull Branch

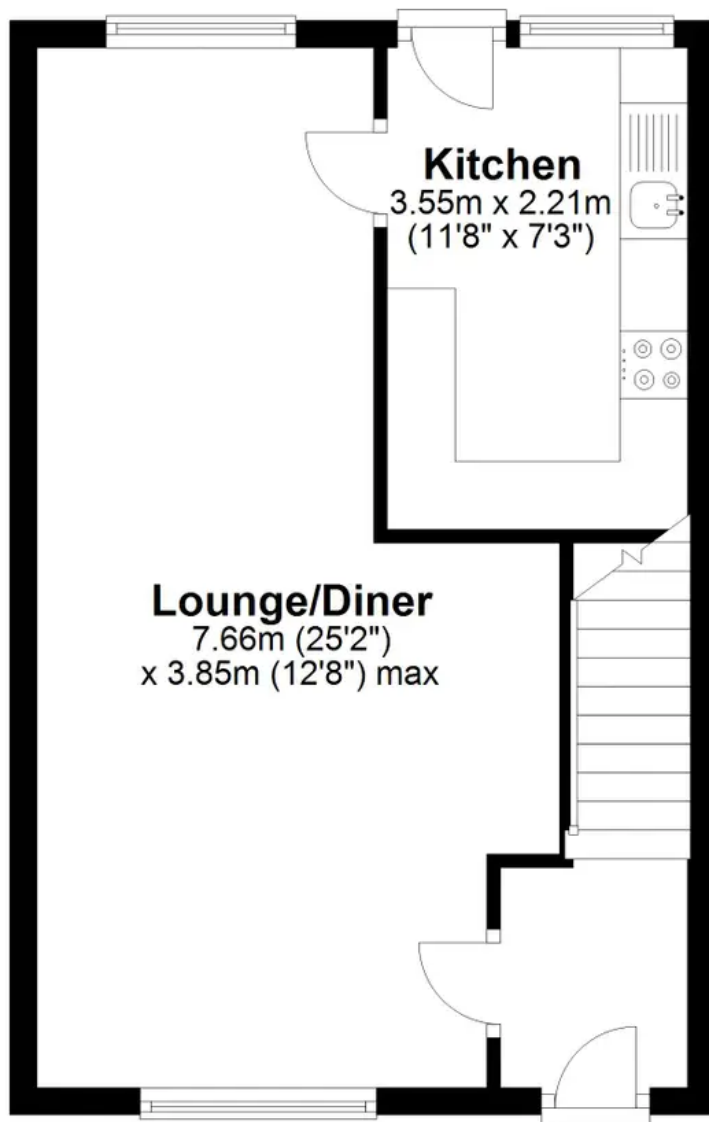
244 Spendmore Lane, Coppull, PR7 5DE
01257 794588

www.hometruthslancs.co.uk
office@hometruthslancs.co.uk



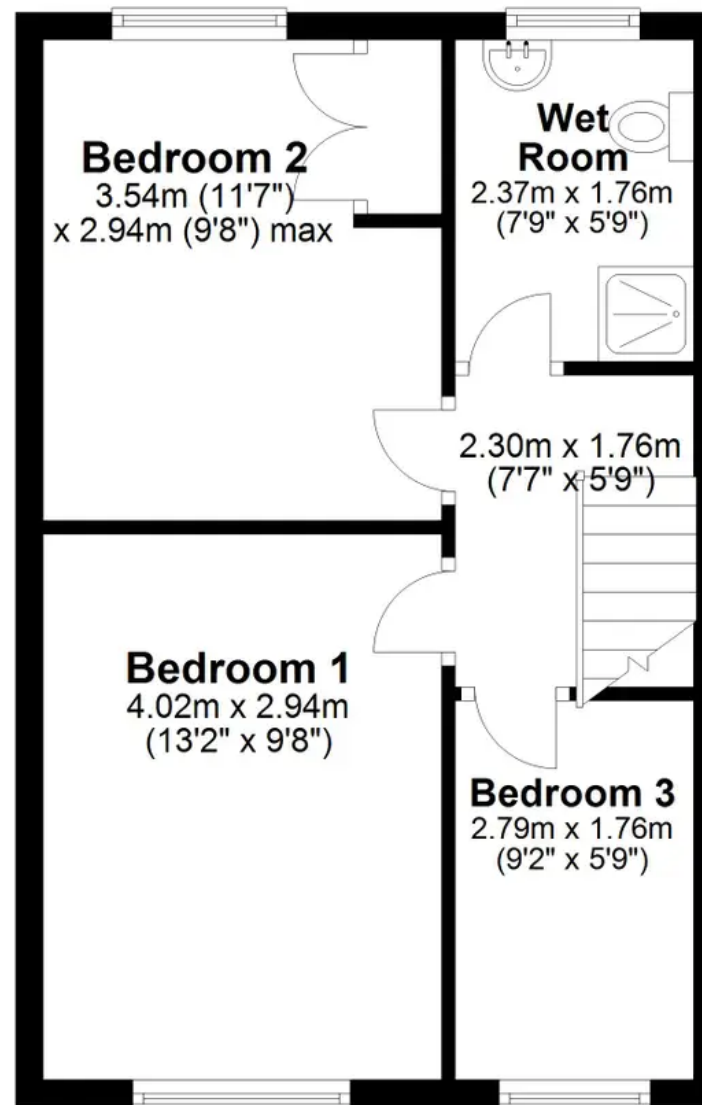
Ground Floor

Approx. 36.7 sq. metres (395.1 sq. feet)



First Floor

Approx. 36.7 sq. metres (395.1 sq. feet)



Total area: approx. 73.4 sq. metres (790.2 sq. feet)

THIS FLOOR PLAN IS FOR ILLUSTRATION ONLY AND IS NOT A SCALE DRAWING, SQFT IS AN APPROXIMATE GUIDE
Plan produced using PlanUp.