



Woodlands Park Road, London – N15 3RT  
£3,000 pcm

**DAVID  
ANDREW**

your  
most  
valuable  
asset

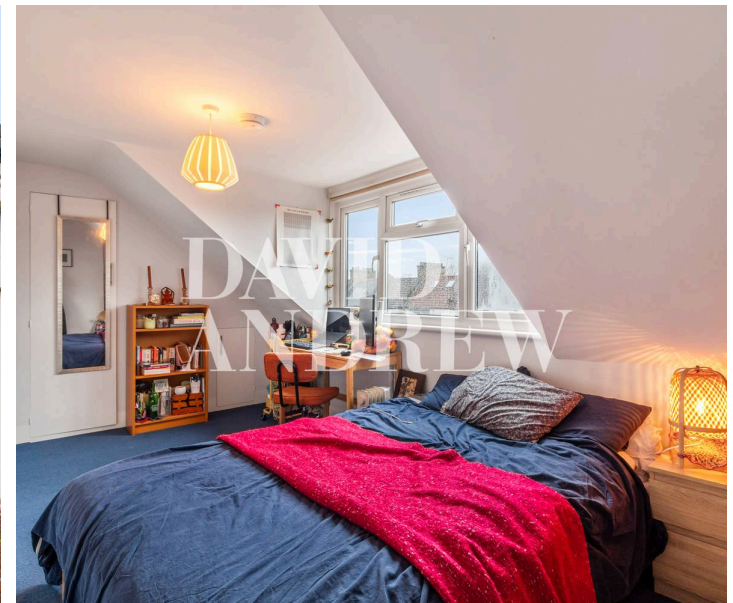


Spacious three double bedroom apartment occupying the first and second floors of this delightful period conversion. Woodlands Park Road offers excellent transport links via close proximity to the bustling Green Lanes, West Green Road and nearby Turnpike Lane Station.

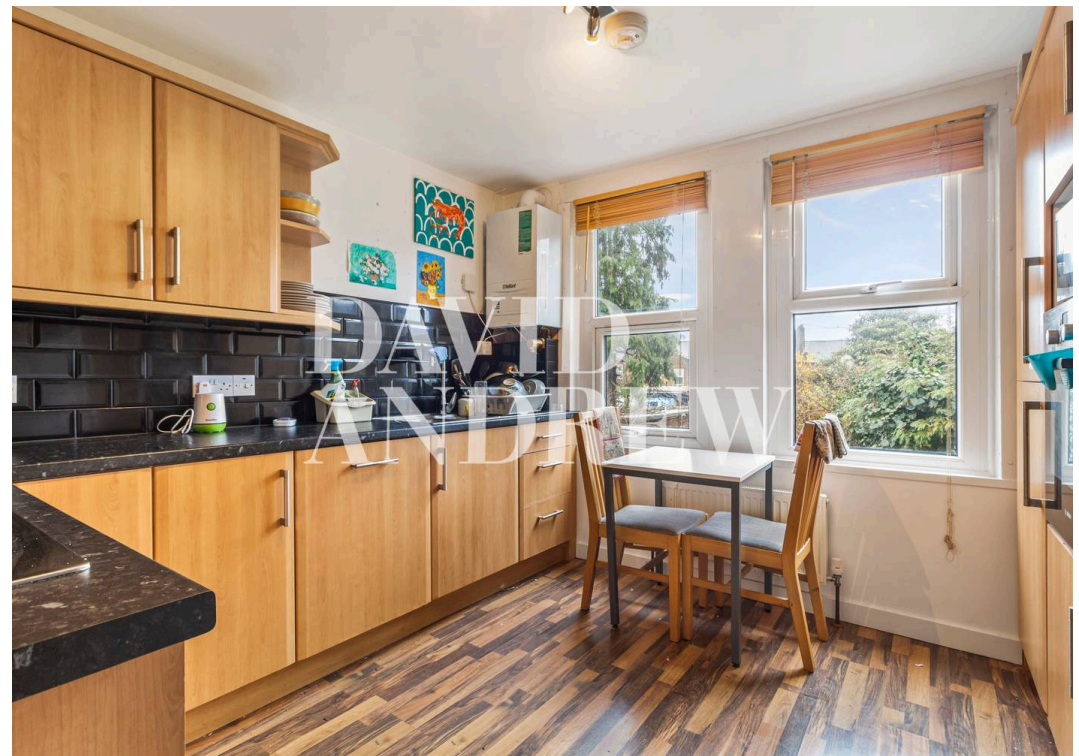
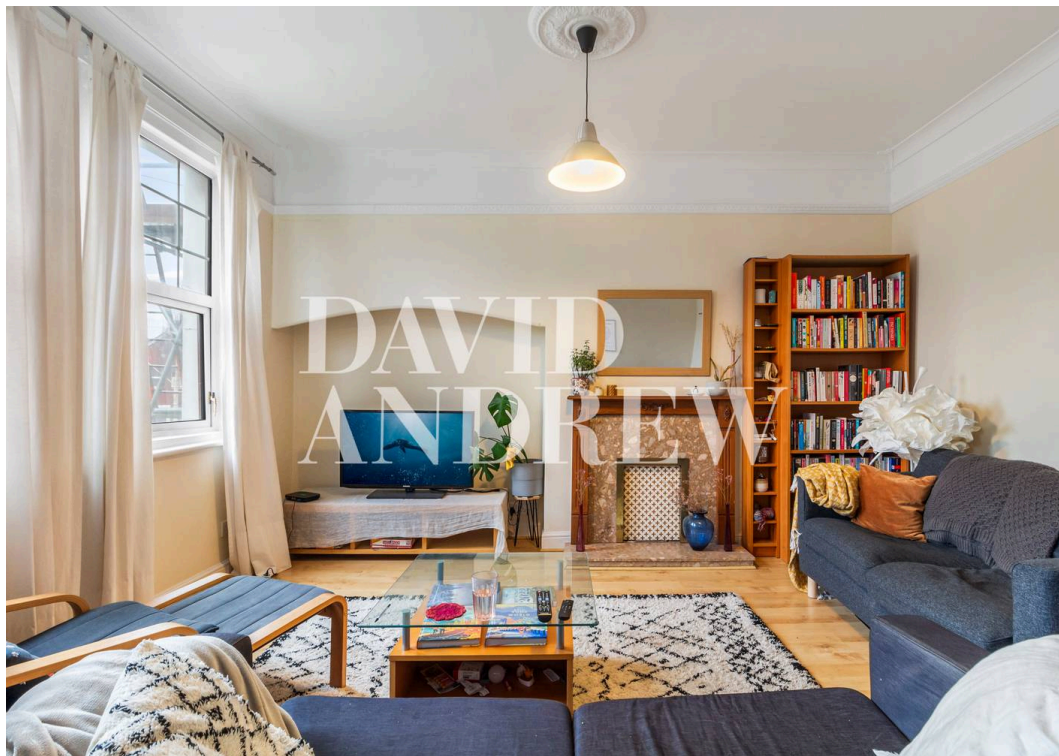
This spacious three double bedroom flat, comprising 103 sq mt (1,112 sq ft), offers a beautifully balanced blend of modern comfort and thoughtful design. The property features a fully fitted modern kitchen, perfect for home cooks, and a separate reception room that creates an inviting space for relaxation or entertaining. Large double glazed windows allow natural light to fill each room, enhancing the sense of warmth throughout the flat. The interiors are finished with a tasteful mix of wooden flooring and plush carpets, providing both style and comfort. Each bedroom is generously sized, ensuring ample space for rest and storage.

Woodlands Park Road is enviably located in the heart of Harringay, served by both Green Lanes' amazing array of restaurants, cafe's and pubs, the convenience and transport links of West Green Road and a short distance from Turnpike Lane Station (Piccadilly line). A must view for professional sharers and families alike. Offered furnished and available from the 25th of April.

- Three Double Bedrooms Flat
- Comprising 103 sq mt / 1112 sq ft
- Fully Fitted Modern Kitchen
- Separate Reception Room
- Double Glazed Windows
- Natural Light Filled
- Wooden Flooring and Carpets Throughout
- Walking Distance to Turnpike Lane and Harringay Green Lanes Stations
- Offered Furnished
- Available 25th of April







scan to book  
a viewing



FLOOR 2



#### GROSS INTERNAL AREA

FLOOR 1: 30 sq. ft, 3 m<sup>2</sup>, FLOOR 2: 753 sq. ft, 70 m<sup>2</sup>

FLOOR 3: 329 sq. ft, 31 m<sup>2</sup>, EXCLUDED AREAS:

REDUCED HEADROOM BELOW 1.5M: 48 sq. ft, 4 m<sup>2</sup>

TOTAL: 1112 sq. ft, 103 m<sup>2</sup>

SIZES AND DIMENSIONS ARE APPROXIMATE, ACTUAL MAY VARY.

DAVID  
ANDREW

in these particulars.