



127 Bishop Road, Bristol

Guide Price £880,000

127 Bishop Road

Bristol, Bristol

- Spacious 1920's home
- Impressive architect designed extension
- Large garden studio
- Open aspect across playing fields at the rear
- Three double bedrooms
- Redland Green School APR
- Potential to convert the loft space
- Stylish shower room and w/c
- 70ft garden with side and rear access
- 1389 sqft

A beautifully presented, light and bright 1920's home in the Redland Green APR. This end of terrace property has both side and back access with an open aspect across playing fields at the rear. The property has a spacious entrance hallway which connects all rooms and has a useful w/c neatly tucked under the stairs. The living room has a bay window which looks out on the pretty Magnolia tree in the front garden, a fireplace and a picture rail. At the rear of the house is a second reception room which is open plan to an architect designed kitchen extension. The dining area has a wood floor, fireplace and glazed doors leading on to the garden. There is a useful storage/ utility room discreetly concealed behind curtains. Steps lead down to the impressive kitchen which has a pitched roof and lots of glass providing lots of natural light. The kitchen has a central island with a quartz worktop with sleek units running along the wall, housing integrated appliances. A smart Kardean under heated floor adds warmth while a glazed door links the garden.

Stairs lead up to the first floor to three double bedrooms. The master bedroom at the front has a bay window while the two rooms benefit from the



You can include any text here. The text can be modified upon generating your brochure.



You can include any text here. The text can be modified upon generating your brochure.

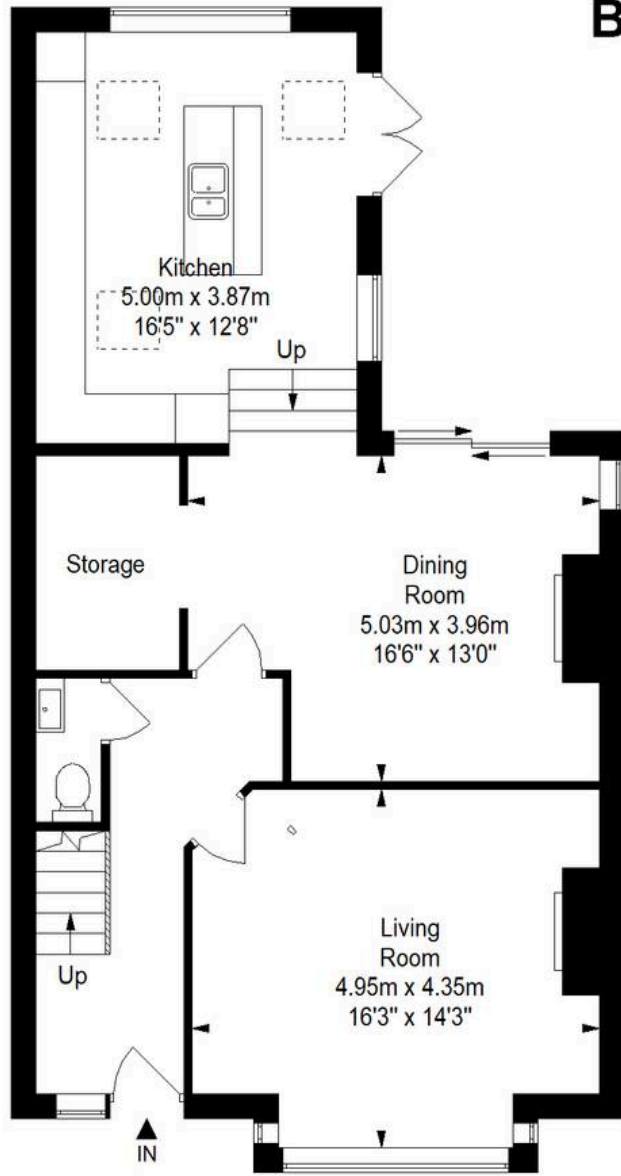


Bishop Road, Bishopston, Bristol, BS7 8LX

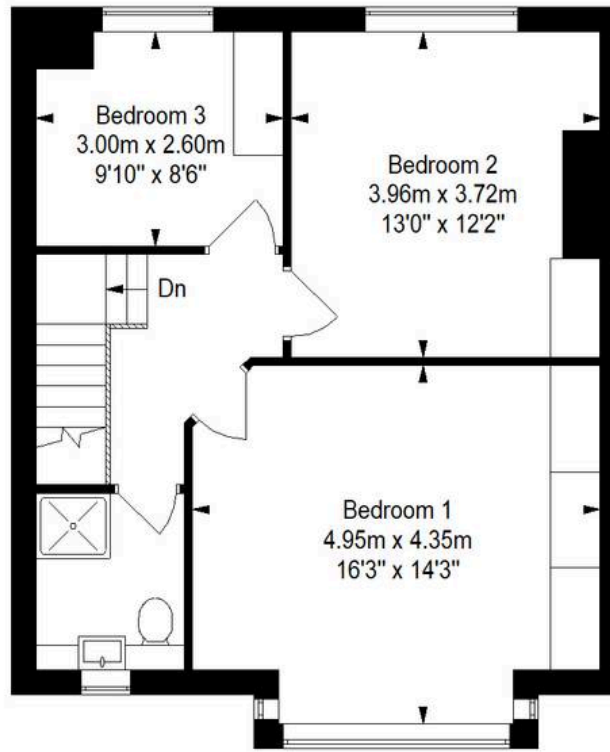
Approximate Gross Internal Area = 129.0 sq m/ 1388.6 sq ft
(Excludes Annex)

Annex = 16.0 sq m/ 172.2 sq ft

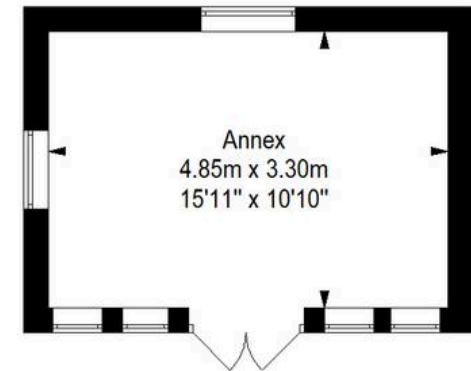
Total Area = 145.0 sq m/ 1560.8 sq ft



Ground Floor



First Floor



Annex

This floor plan has been drawn using RICS guidelines (GIA)

Disclaimer : Please note this floor plan is for marketing purposes and is to be used as guide only.
All Efforts have been made to ensure its accuracy at time of print



Elephant Estate Agents

Elephant, 2 The Promenade Gloucester Road - BS7 8AL

01173700556 • bishopston@elephantlovesbristol.co.uk • www.elephantlovesbristol.co.uk/