



The Green, Thomas Chapel

£290,000 Freehold

Detached 3 Bedroom Character Cottage • Log Burner Set in Stone Fireplace • Enclosed Garden to Front and Rear • Semi Rural Location, Easy Access to both Tenby and Narberth • Detached Workshop and Log Store





This charming three-bedroom detached cottage presents an ideal opportunity for those seeking a characterful home in a peaceful semi-rural location. The property combines traditional features with comfortable living spaces, including a welcoming lounge that boasts a striking log burner set within a classic stone fireplace (perfect for cosy evenings in). The thoughtfully designed layout offers a spacious kitchen and dining area, along with three well-proportioned bedrooms that provide ample accommodation for families or guests. The cottage retains a sense of warmth and individuality throughout, with tasteful finishes that complement its original character. Conveniently situated within easy reach of both Tenby and Narberth, this delightful home offers the perfect balance of countryside tranquillity and accessibility to local amenities.

The property enjoys generous outside space, with enclosed gardens to both the front and rear that are ideal for relaxation, entertaining, or family activities. Mature borders and established planting create a sense of privacy and seclusion, while the lawns provide plenty of room for children or pets to play. A detached workshop and log store add practical appeal, offering excellent storage or potential for hobbies and projects. The gardens are designed for ease of maintenance, ensuring you can enjoy the outdoor spaces throughout the seasons. Whether you are looking to unwind in a peaceful setting or host gatherings with friends and family, this property's outside space provides a versatile and attractive environment to suit a variety of lifestyles.

Council Tax band: F

Tenure: Freehold

EPi Energy Rating: E

EPi Impact Rating: E





Dining / Living Room

12' 10" x 28' 3" (3.91m x 8.60m)

Kitchen

7' 9" x 16' 10" (2.35m x 5.13m)

Bathroom

4' 8" x 9' 3" (1.42m x 2.82m)

Bedroom

14' 4" x 12' 11" (4.37m x 3.94m)

Bedroom

10' 6" x 13' 3" (3.19m x 4.05m)

Study

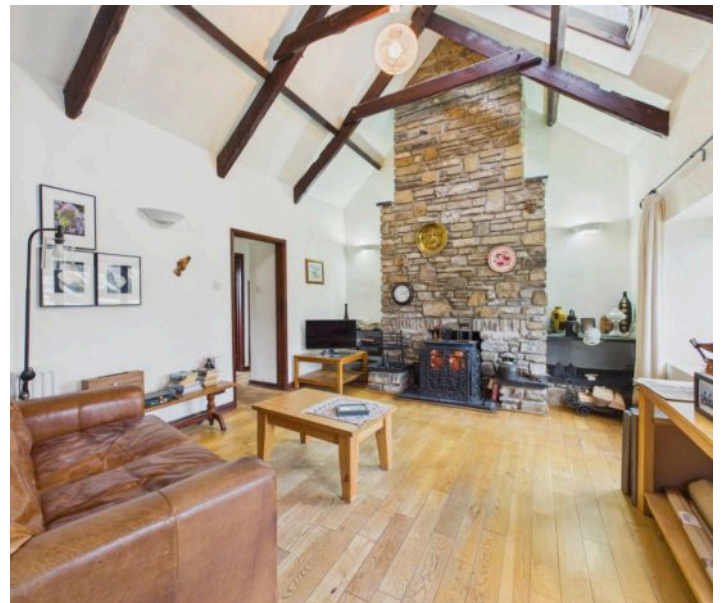
8' 4" x 12' 3" (2.55m x 3.74m)

Bathroom

8' 4" x 13' 9" (2.54m x 4.20m)

Bedroom

12' 4" x 13' 9" (3.75m x 4.20m)





Dining / Living Room

12' 10" x 28' 3" (3.91m x 8.60m)

Kitchen

7' 9" x 16' 10" (2.35m x 5.13m)

Bathroom

4' 8" x 9' 3" (1.42m x 2.82m)

Bedroom

14' 4" x 12' 11" (4.37m x 3.94m)

Bedroom

10' 6" x 13' 3" (3.19m x 4.05m)

Study

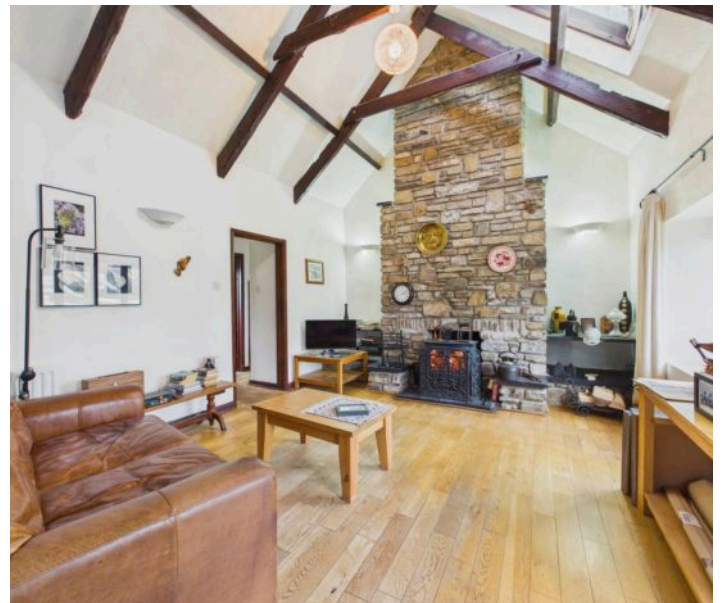
8' 4" x 12' 3" (2.55m x 3.74m)

Bathroom

8' 4" x 13' 9" (2.54m x 4.20m)

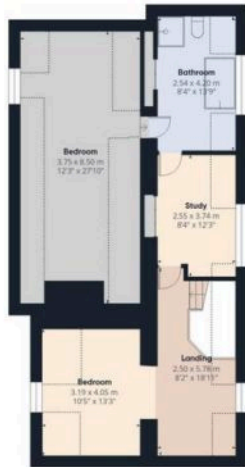
Bedroom

12' 4" x 13' 9" (3.75m x 4.20m)





Floor 0



Floor 1



Approximate total area⁽¹⁾

158.8 m²
1708 ft²

Reduced headroom

21.3 m²
229 ft²

blackbear ⁽¹⁾ Excluding balconies and terraces

Reduced headroom
— Below 1.5 m/5 ft.

Calculations reference the RICS IPMS 3C standard. Measurements are approximate and not to scale. This floor plan is intended for illustration only.

GIRAFFE360

You can include any text here. The text can be modified upon generating your brochure.

