



1 Giltar Way, Penally

£295,000 Freehold

Detached Bungalow • 3 Bedrooms, Bathroom, Kitchen, Lounge, Sun Room, Utility, Wc • Picturesque Views •
Landscaped Gardens, Driveway & Garage • Desirable Village Location • No Onward Chain





The Property

This 3 bedroom bungalow is in the sought after location of Penally Heights with lovely coastal scenery.

Gated, gentle steps ascend to the bungalow, which is surrounded by attractive, well-stocked gardens laid out over three levels to maximise the fabulous coastal views. The gardens are a haven of colourful, mature specimen shrubs and ornamental bushes, complemented by several paved patios offering sunny, secluded spots to relax.

Council Tax band: E

Tenure: Freehold

EPC Energy Efficiency Rating: D

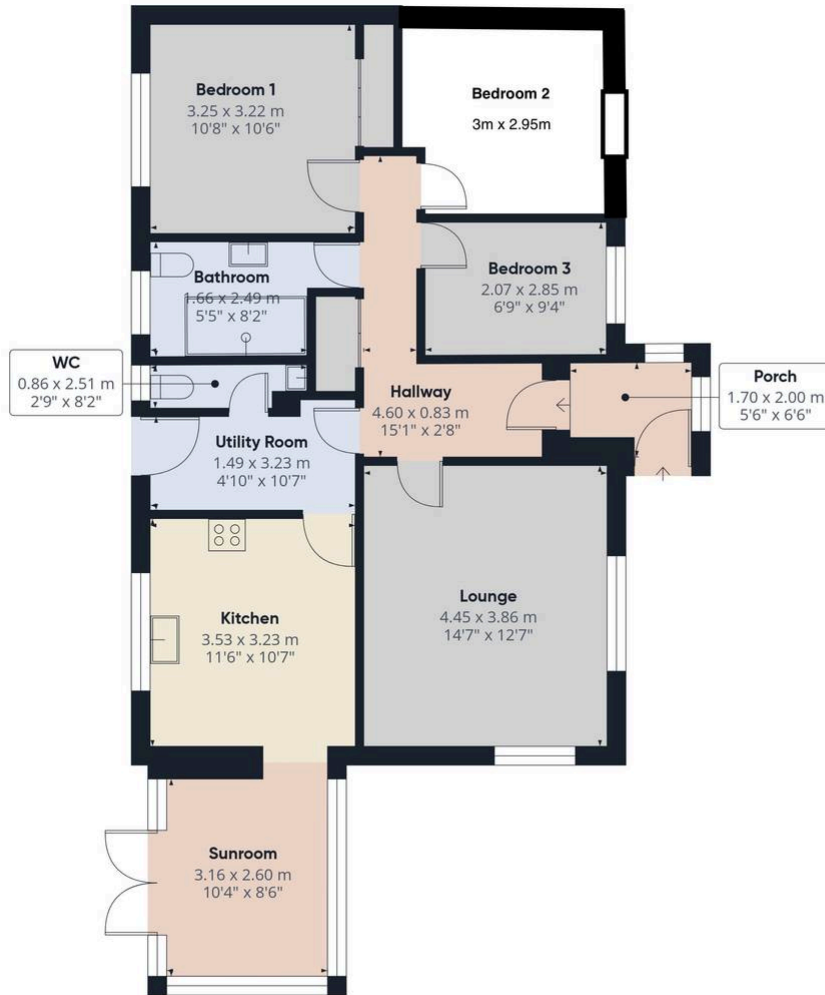




- Porch**
6' 7" x 5' 7" (2.00m x 1.70m)
- Lounge**
14' 7" x 12' 8" (4.45m x 3.86m)
- Kitchen**
11' 7" x 10' 7" (3.53m x 3.23m)
- Sun Room**
10' 4" x 8' 6" (3.16m x 2.60m)
- Utility Room**
7' 7" x 4' 11" (2.30m x 1.49m)
- Wc**
8' 3" x 2' 10" (2.51m x 0.86m)
- Bedroom 1**
10' 8" x 10' 7" (3.25m x 3.22m)
- Bedroom 2**
9' 10" x 9' 8" (3.00m x 2.95m)
- Bedroom 3**
9' 4" x 6' 9" (2.85m x 2.07m)
- Shower Room**
8' 2" x 5' 5" (2.49m x 1.66m)







Approximate total area⁽¹⁾
78.2 m²
843 ft²

blackbear

(1) Excluding balconies and terraces

Calculations reference the RICS IPMS 3C standard. Measurements are approximate and not to scale. This floor plan is intended for illustration only.

GIRAFFE360

You can include any text here. The text can be modified upon generating your brochure.

