



  
**Holdens**  
ESTATE AGENTS

**12 Tomlinson Road, Ashton-On-Ribble**

Offers in Region of **£139,950**

  
**Holdens**  
ESTATE AGENTS



## 12 Tomlinson Road

Ashton-On-Ribble, Preston

Three-bedroom mid-terrace freehold with two receptions, modern kitchen, adapted wet room, no chain. Needs modernisation. Close to parks and amenities. Early viewing recommended. Council Tax band: B

Tenure: Freehold

EPC Energy Efficiency Rating: C

EPC Environmental Impact Rating:

- Available With No Onward Chain
- Freehold
- Mid Terrace Property
- Three Bedrooms
- Two Reception Rooms
- Modern Kitchen
- Adapted Wet Room
- Situated Close To Local Parks & Amenities



  
**Holdens**  
ESTATE AGENTS

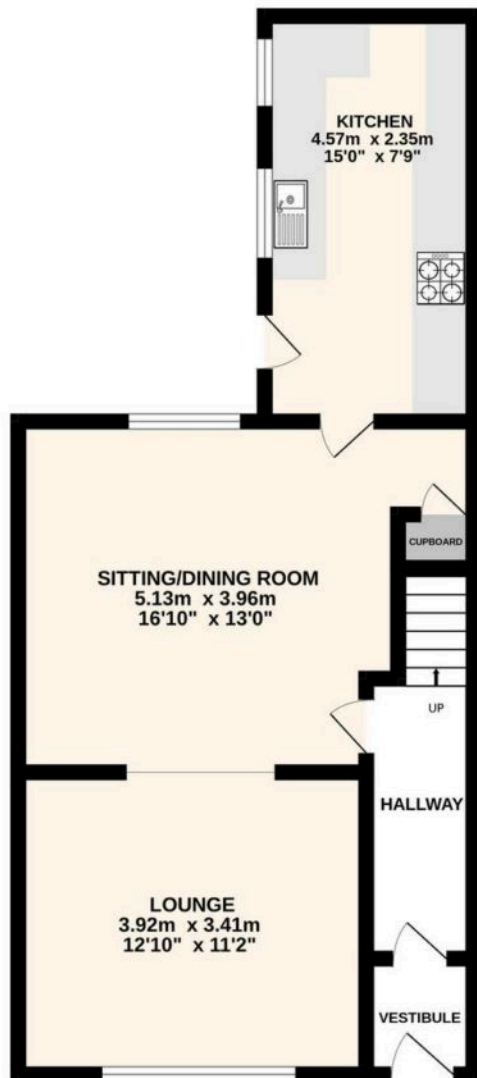
  
**Holdens**  
ESTATE AGENTS

  
**Holdens**  
ESTATE AGENTS





GROUND FLOOR  
48.6 sq.m. (523 sq.ft.) approx.



1ST FLOOR  
43.8 sq.m. (472 sq.ft.) approx.



TOTAL FLOOR AREA : 92.4 sq.m. (995 sq.ft.) approx.

Every attempt is made to ensure accuracy, however all measurements are approximate. This plan is for illustrative purposes only and is not to scale.  
Made with Metropix ©2026



## Holdens Lostock Hall

Holdens Estate Agents, 6 Watkin Lane - PR5 5RD

01772 698888

lostockhall@holdens.co.uk

[www.holdens.co.uk/](http://www.holdens.co.uk/)

Disclaimer: All information such as plans, dimensions, and details about the property's condition or suitability is provided in good faith and believed to be accurate, but should not be relied upon without independent verification. Buyers or tenants must carry out their own checks. Appliances and systems haven't been tested. It's strongly advised to get professional inspections before making any commitments. No employee or agent of Holdens Estate Agents is authorised to make promises or guarantees about the property. These details are for general guidance only and do not form part of any contract. All discussions with Holdens Estate Agents are subject to contract.