



18 Tyne Road, Bristol  
£1,000,000

# 18 Tyne Road

Bristol, Bristol

- Six bedrooms
- Redland Green catchment area
- Close to Gloucester Road
- Off street parking
- 2146.34 sq.ft
- Large rear garden
- Prime Bishopston location
- Retained period features

A deceptively large six-bedroom Victorian family home on one of Bishopston's premier roads. The property has been sympathetically modernised and is within the Redland Green APR, with amenities on Gloucester Road a short walk away.

The 2146 sq ft accommodation is arranged over four floors, with adaptable living spaces that include a large sitting room and a well-appointed kitchen/diner with direct access to a sun terrace overlooking the rear garden. The ground floor comprises a welcoming entrance hall leading to a well-proportioned reception room, perfect for formal entertaining or relaxed family living; a kitchen/diner; and a cloakroom. Stairs lead to the lower ground floor and first floor.

The reception room at the front features double-glazed twin-sash windows, an ornate ceiling rose and cornice, a gas fire with a marble surround, built-in cabinetry, and exposed wooden floorboards. The kitchen/diner to the rear has two double-glazed sash windows and a double-glazed door, overlooking the rear garden and leading onto a decked terrace seating area. The modern white kitchen contrasts beautifully with the retained period features and offers ample storage, a large breakfast



You can include any text here. The text can be modified upon generating your brochure.




You can include any text here. The text can be modified upon generating your brochure.

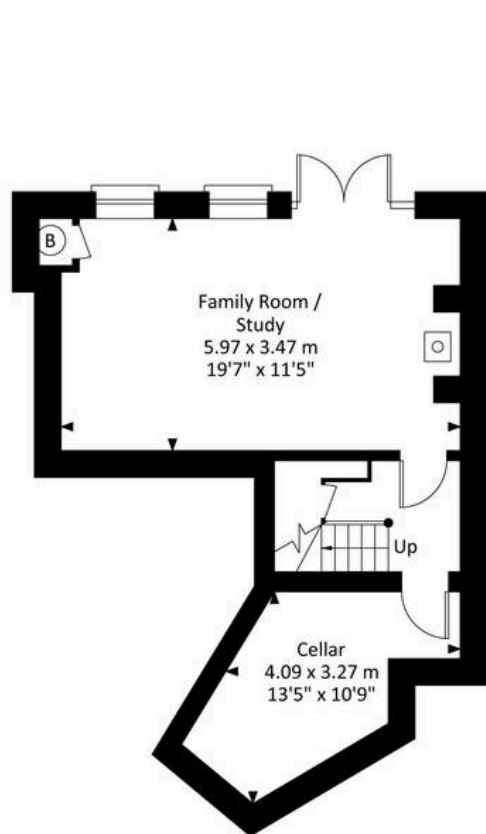


# 18 Tyne Road, Bishopston, Bristol, BS7 8EE

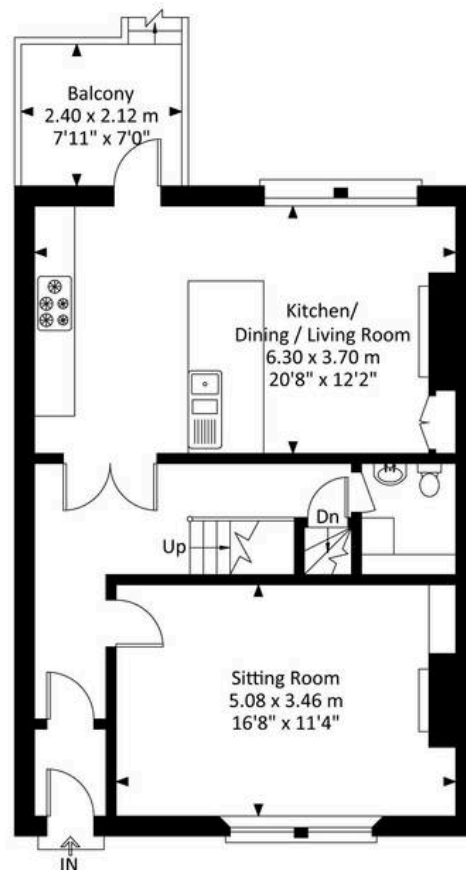
Approximate Gross Internal Area = 199.41 sq m / 2146.43 sq ft



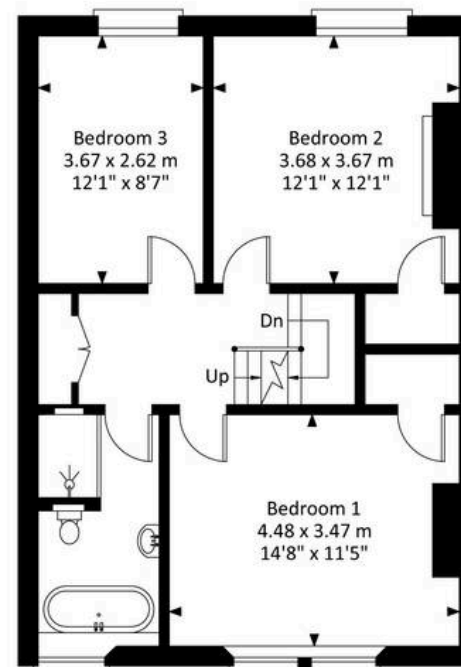
 = Reduced Head Height



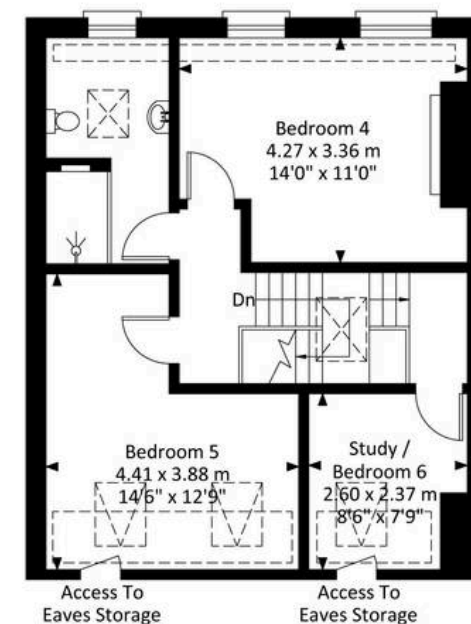
Lower Ground Floor



Ground Floor



First Floor



Second Floor

Illustration for identification purposes only, measurements are approximate, not to scale.



## Elephant Estate Agents

Elephant, 2 The Promenade Gloucester Road - BS7 8AL

01173700556 • [bishopston@elephantlovesbristol.co.uk](mailto:bishopston@elephantlovesbristol.co.uk) • [www.elephantlovesbristol.co.uk/](http://www.elephantlovesbristol.co.uk/)