



**4 Julius Road, Bristol**

Guide Price **£1,400,000**

# 4 Julius Road

Bristol, Bristol

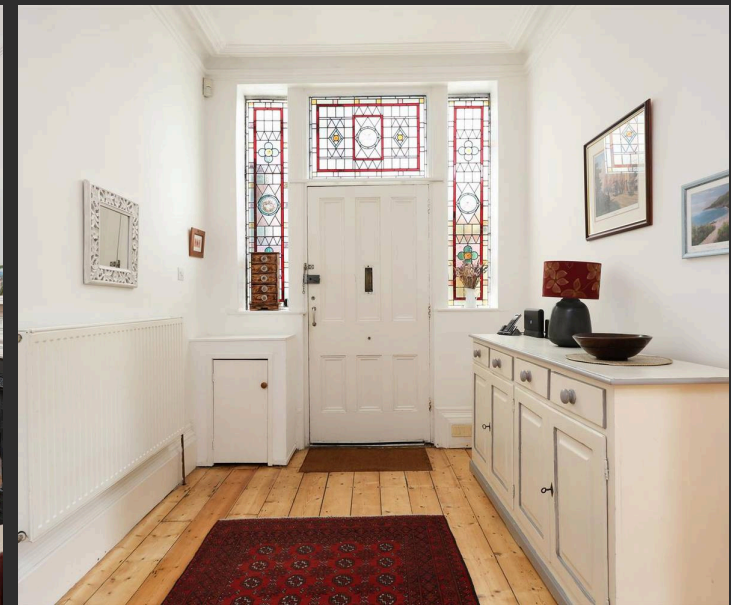
- Impressive Victorian home
- Off street parking for two cars
- Seven well-proportioned double bedrooms
- Full-width open plan kitchen/dining room
- French doors opening to garden
- Spacious garden with patio and lawned areas
- Light and airy living room with bay window
- Sought after location
- Highly regarded schools nearby
- 3004 sqft

An impressive Victorian home offering generously sized rooms and beautiful period details.

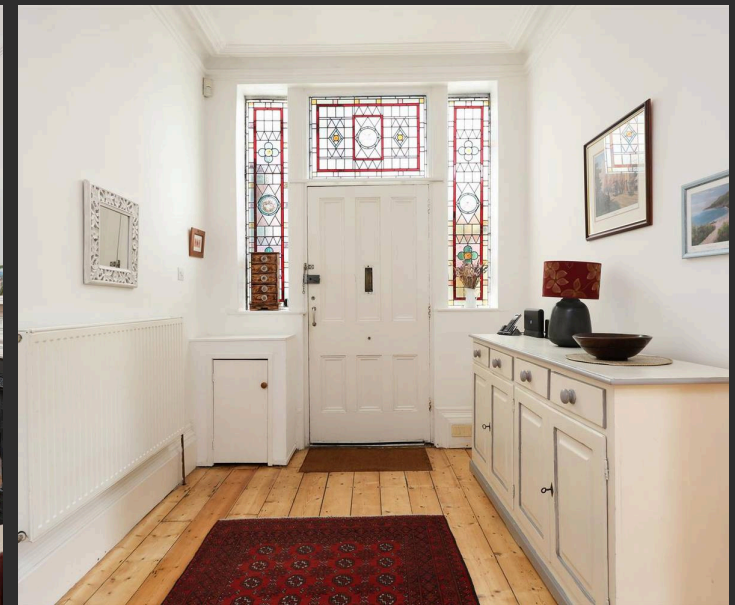
At the front of the property, a paved driveway provides off-street parking for two cars, framed by raised beds filled with mature planting. The entrance, set to the side of the home, is surrounded by striking stained glass details that hint at the character within.

Stepping inside, stripped wooden floorboards run through the hallway and into the kitchen/dining room. The living room sits at the front of the house, where a large bay window floods the space with natural light. A ceiling rose and fireplace offer elegant period touches, making the room both stylish and welcoming. Adjacent, the study is a versatile space with more stripped wooden flooring, two sash windows, and built-in shelving for tidy, practical storage.

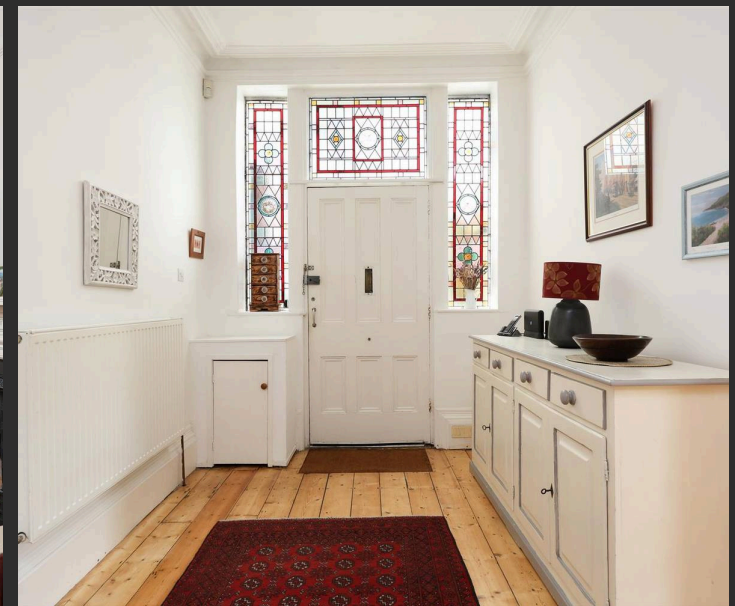
From the hallway, a staircase tucked neatly behind the main stairs leads down to the cellar. This generous space is currently used for storage but offers excellent flexibility.



You can include any text here. The text can be modified upon generating your brochure.

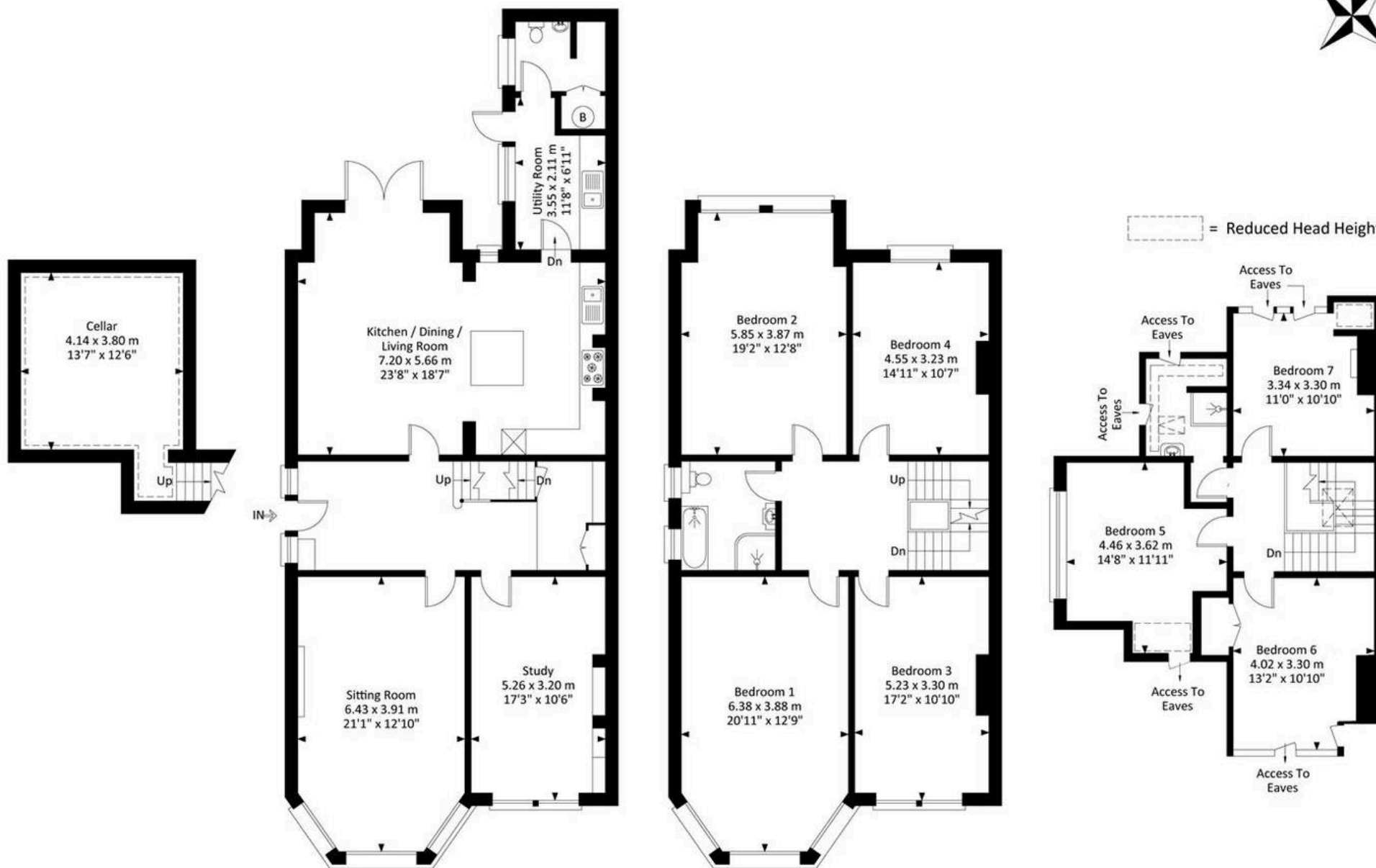
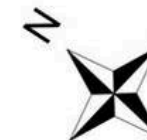


You can include any text here. The text can be modified upon generating your brochure.



# 4 Julius Road, Bishopston, Bristol, BS7 8EU

Approximate Gross Internal Area = 279.16 sq m / 3004.85 sq ft



Cellar

Ground Floor

First Floor

Second Floor

Illustration for identification purposes only, measurements and approximate, not to scale.





## Elephant Estate Agents

Elephant, 2 The Promenade Gloucester Road - BS7 8AL

01173700556 • [bishopston@elephantlovesbristol.co.uk](mailto:bishopston@elephantlovesbristol.co.uk) • [www.elephantlovesbristol.co.uk/](http://www.elephantlovesbristol.co.uk/)