



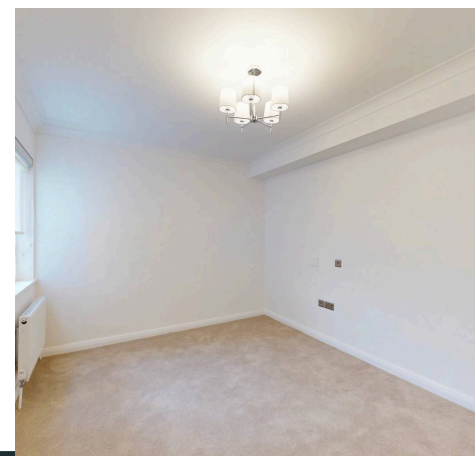
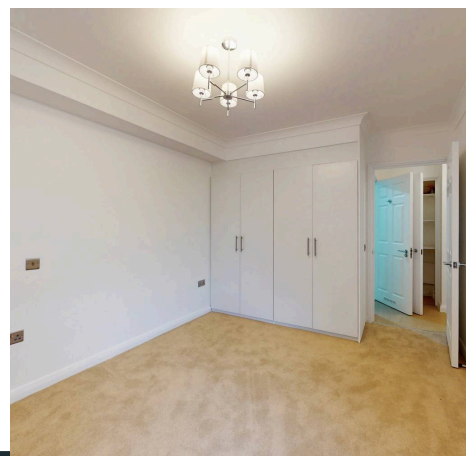
Heathside, Finchley Road, NW11

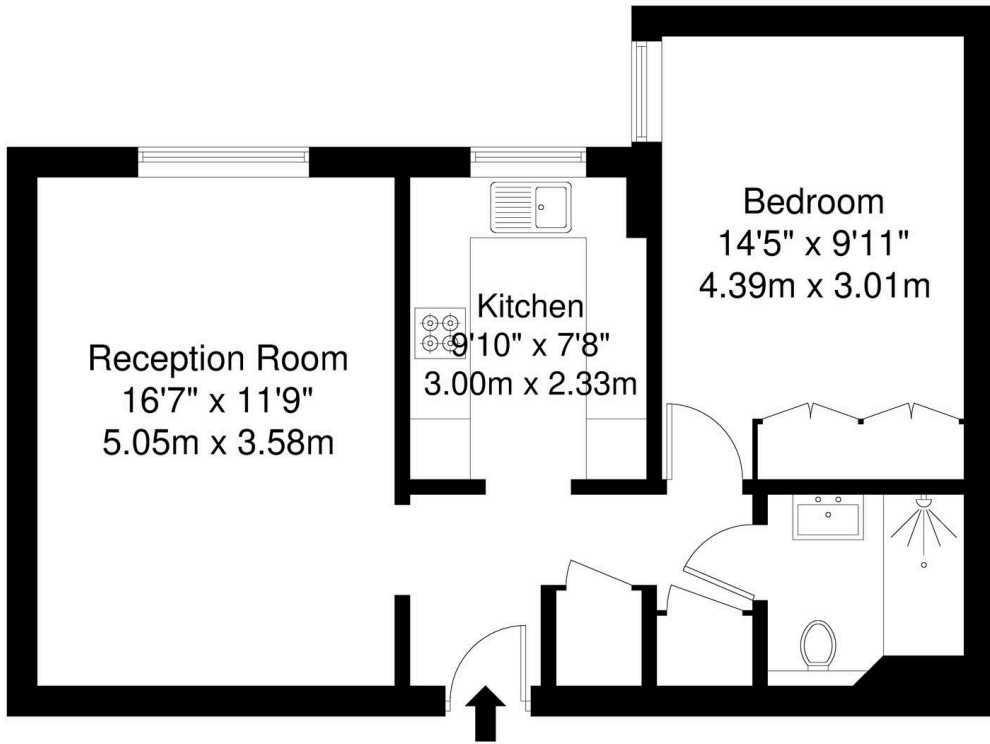
Available now, this newly refurbished one bedroom ground-floor flat within the Heathside Development is bright, modern, and well presented throughout. Large windows bring in excellent natural light, with a welcoming reception room, contemporary kitchen, and a double bedroom with built-in wardrobes. A separate storage cupboard houses a washer and dryer.

The rent includes heating, hot water, broadband, and a TV licence. Residents benefit from lift access, video entry, an on-site house manager and caretaker, along with access to a refurbished residents' lounge and therapy room.

Heathside is well located within walking distance of Golders Green, Golders Hill Park, and Hampstead Heath, with Golders Green Underground station and a wide range of shops and coffee shops close by.

- Available Now
- Deposit £3923
- Ground Floor
- Retirement Flat
- Newly Refurbished
- One Bedroom
- On-Site House Manager
- Residents Lounge
- Communal Gardens
- Close to Shops





Ground Floor

Energy Efficiency Rating		
	Current	Potential
<i>Very energy efficient - lower running costs</i>		
(92+) A		
(81-91) B		
(69-80) C	72	78
(55-68) D		
(39-54) E		
(21-38) F		
(1-20) G		
<i>Not energy efficient - higher running costs</i>		
England, Scotland & Wales	EU Directive 2002/91/EC	

Heathside, Finchley Road, NW11

Total Gross Internal Area = 50.6 sq m / 544 sq ft

All Measurements are approximate and for identification guideline purposes only, not to scale.
Compliant with the RICS code of measuring practice



Pearl & Chance

1 Hoop Lane, London - NW11 8JR

0208 059 5559

info@pearlandchance.co.uk

<http://pearlandchance.co.uk>



IMPORTANT: These sales particulars have been prepared as a general guide only. A detailed survey has not been carried out, nor the services, appliances and fittings tested. Room sizes should not be relied upon for furnishing purposes and are approximate. If floor plans are included, they are for guidance only and illustration purposes only and may not be to scale. If there are any important matters likely to affect your decision to buy, please contact us before viewing the property.