



26 Melbourne Road, Bristol
£525,000

26 Melbourne Road

Bristol, Bristol

- Victorian terraced home
- Open plan reception rooms
- Updated kitchen
- Two double bedroom
- Four piece-family bathroom
- Utility room
- Southerly facing garden
- Close to Gloucester Road
- Bishop Road & Redland Green APR
- 1017 sqft

Tucked away on a quiet road in Bishopston is this charming two double bedroom mid-terraced Victorian home. The property retains many period features whilst benefitting a contemporary finish, a south facing rear garden and rooftop views across Bishopston.

Accommodation comprises: Main entrance which leads into the hallway with a stripped wooden floor. Doors from the hall lead into two linked reception rooms that create a light and airy open plan living space. Towards the front of the house is a formal living room with the bay, double glazed sash style windows, plantation shutters, stripped wood floors, fireplace with a wood burning stove, period cornice and picture rail. An opening leads onto the second reception, currently occupied as a dining area, with stripped wood floors and a double glazed window which looks out onto the side garden. At the rear of the property is the kitchen and a separate utility room. The kitchen is complete with a range of fitted wall and base units with contrasting work surface, metro tiled splash back and stainless steel fittings. A side door from the kitchen provides access to the rear garden. Beyond the kitchen a useful utility room



You can include any text here. The text can be modified upon generating your brochure.

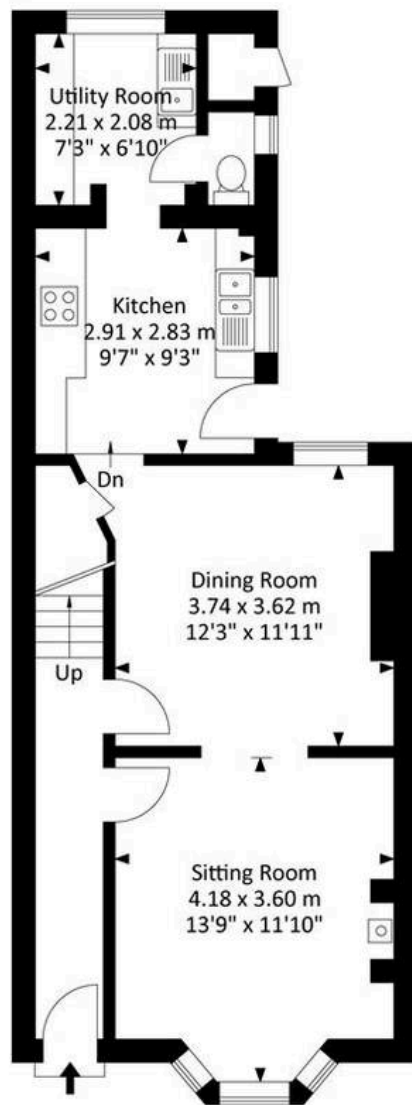


You can include any text here. The text can be modified upon generating your brochure.

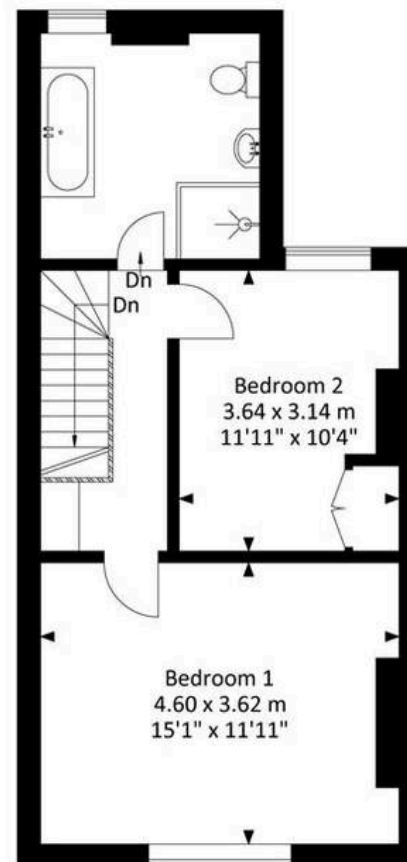


Melbourne Road, Bishopston, Bristol, BS7 8LB

Approx. Gross Internal Area 1017.51 Sq.Ft - 94.53 Sq.M



Ground Floor



First Floor

For illustrative purposes only. Not to scale.

Whilst every attempt has been made to ensure accuracy of the floor plan all measurements are approximate and no responsibility is taken for any error, omission or measurement.





Elephant Estate Agents

Elephant, 2 The Promenade Gloucester Road - BS7 8AL

01173700556 • bishopston@elephantlovesbristol.co.uk • www.elephantlovesbristol.co.uk/