



6 Boot & Shoe Close, Crundale

£190,000 Freehold

Perfect for First Time Buyers • Sought After Location • End of Terrace • Immaculate Presentation • Low Maintenance Garden







Kitchen / Diner

9' 3" x 19' 3" (2.81m x 5.87m)

Living Room

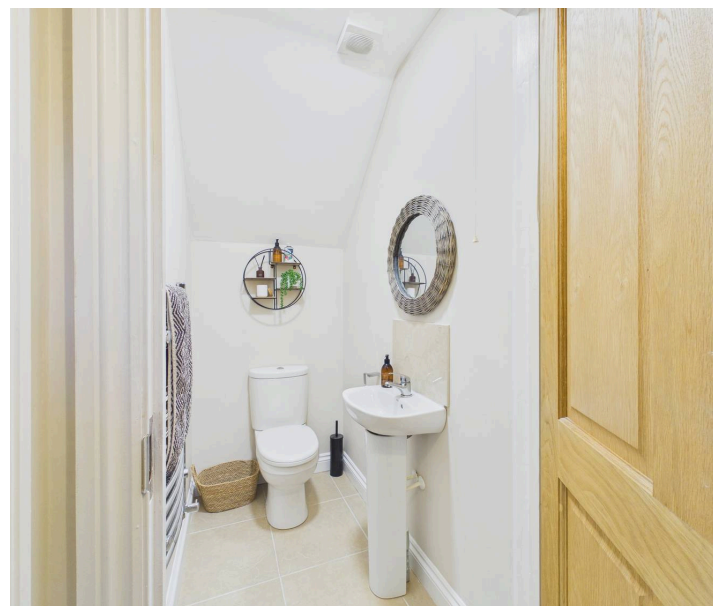
9' 10" x 19' 3" (3.00m x 5.86m)

WC

3' 4" x 5' 3" (1.01m x 1.61m)

Hallway

3' 9" x 3' 5" (1.15m x 1.03m)





Landing

3' 6" x 3' 2" (1.07m x 0.96m)

Bedroom 1

10' 0" x 19' 3" (3.04m x 5.87m)

Bedroom 2

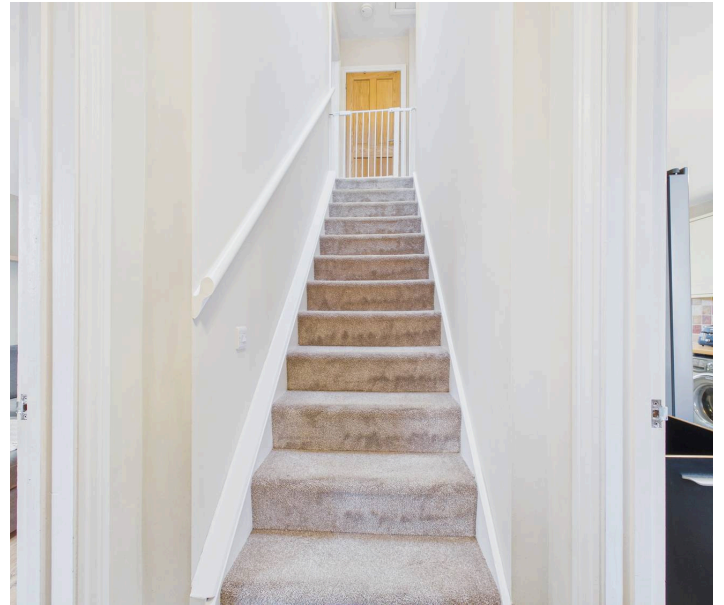
9' 6" x 11' 10" (2.90m x 3.61m)

Bathroom

6' 0" x 7' 0" (1.82m x 2.13m)



blackbear





GARDEN



blackbear

