



24 Gardenia Grove, Nottingham - NG3 6HZ

Guide Price £230,000



24 Gardenia Grove

Nottingham, Nottingham

GUIDE PRICE £230,000 - £250,000. Well-presented 2 bed detached bungalow close to Mapperley & Carlton's amenities & bus links. Featuring a bright & airy lounge, stylish dining/kitchen and low maintenance rear garden.

Council Tax band: B

Tenure: Freehold

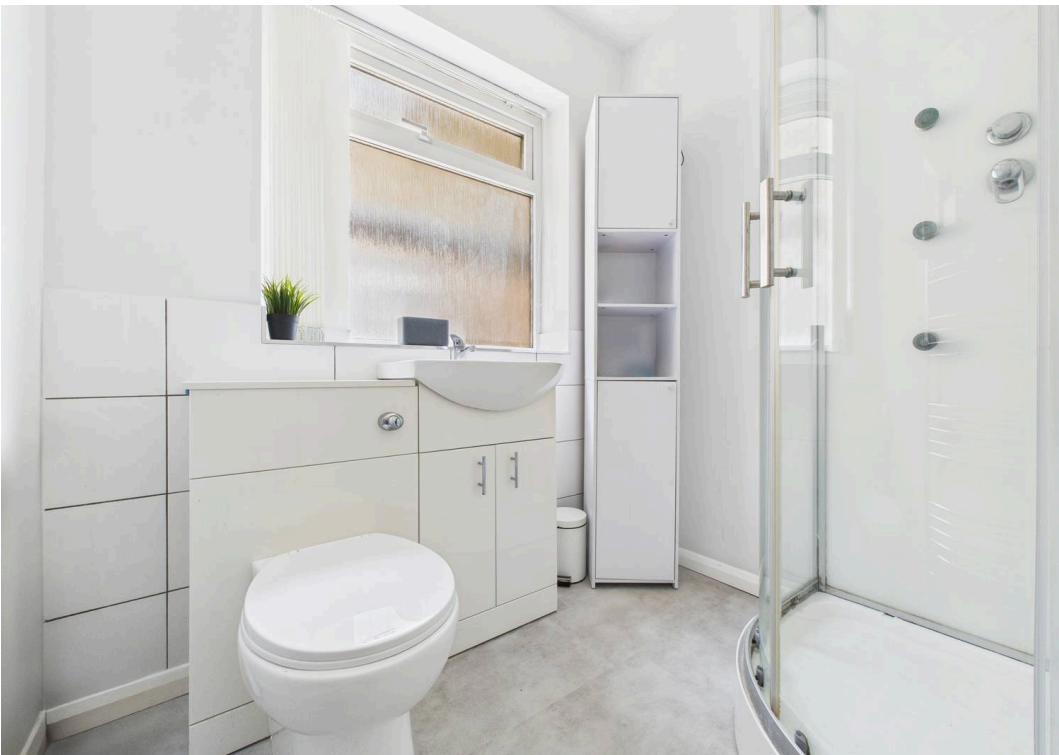
EPC Energy Efficiency Rating: D

EPC Environmental Impact Rating: D

- Well-presented detached bungalow
- Great location close to both Mapperley and Carlton's amenities, shops, supermarkets and bus links
- Perfect for first time buyers, downsizers or investors
- Good-sized lounge with feature fireplace, full width window providing fantastic views
- Stylish dining/kitchen with shaker style units, integrated cooking appliances, dishwasher and space for a table and chairs
- Two well-presented double bedrooms (generously sized main bedroom)
- Modern white three-piece suite shower room with vanity sink and dual-head mains shower
- UPVC double glazing and gas central heating
- Low maintenance tiered decked rear garden with beautiful views across Mapperley and the surrounding areas
- Driveway and garage providing off-street parking









Floor 0

Approximate total area⁽¹⁾

88.3 m²

951 ft²



Floor 1

(1) Excluding balconies and terraces

Calculations reference the RICS IPMS 3C standard. Measurements are approximate and not to scale. This floor plan is intended for illustration only.

GIRAFFE360



David James Estate Agents

David James Estate Agents, 45B Plains Road - NG3 5JU

0115 962 4213 • mapperley@david-james.com • www.david-james.com

These particulars are produced in good faith and are set out as a general guide only. Measurements are approximate and floor plans are for illustrative purposes only. Services have not been tested. We have established professional relationships with third-party suppliers for the provision of services to Clients, details of which can be found on the property listing page on our website.