



14 Hawthorn Rise, Haverfordwest

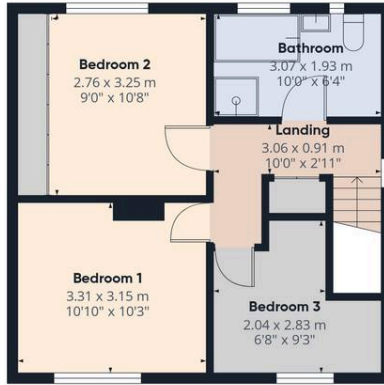
£170,000 Freehold

Large Enclosed Garden • 3 Bedroom Semi Detached • Perfect for First Time Buyers • Very Popular Area • Close to Local Amenities





Floor 0



Floor 1



Approximate total area[†]
78.5 m²
846 ft²

(†) Excluding balconies and terraces

Calculations reference the RICS IPMS 3C standard. Measurements are approximate and not to scale. This floor plan is intended for illustration only.

GIRAFFE360

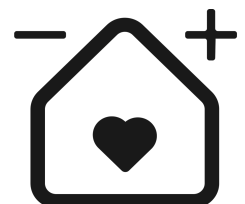


Council Tax band: C

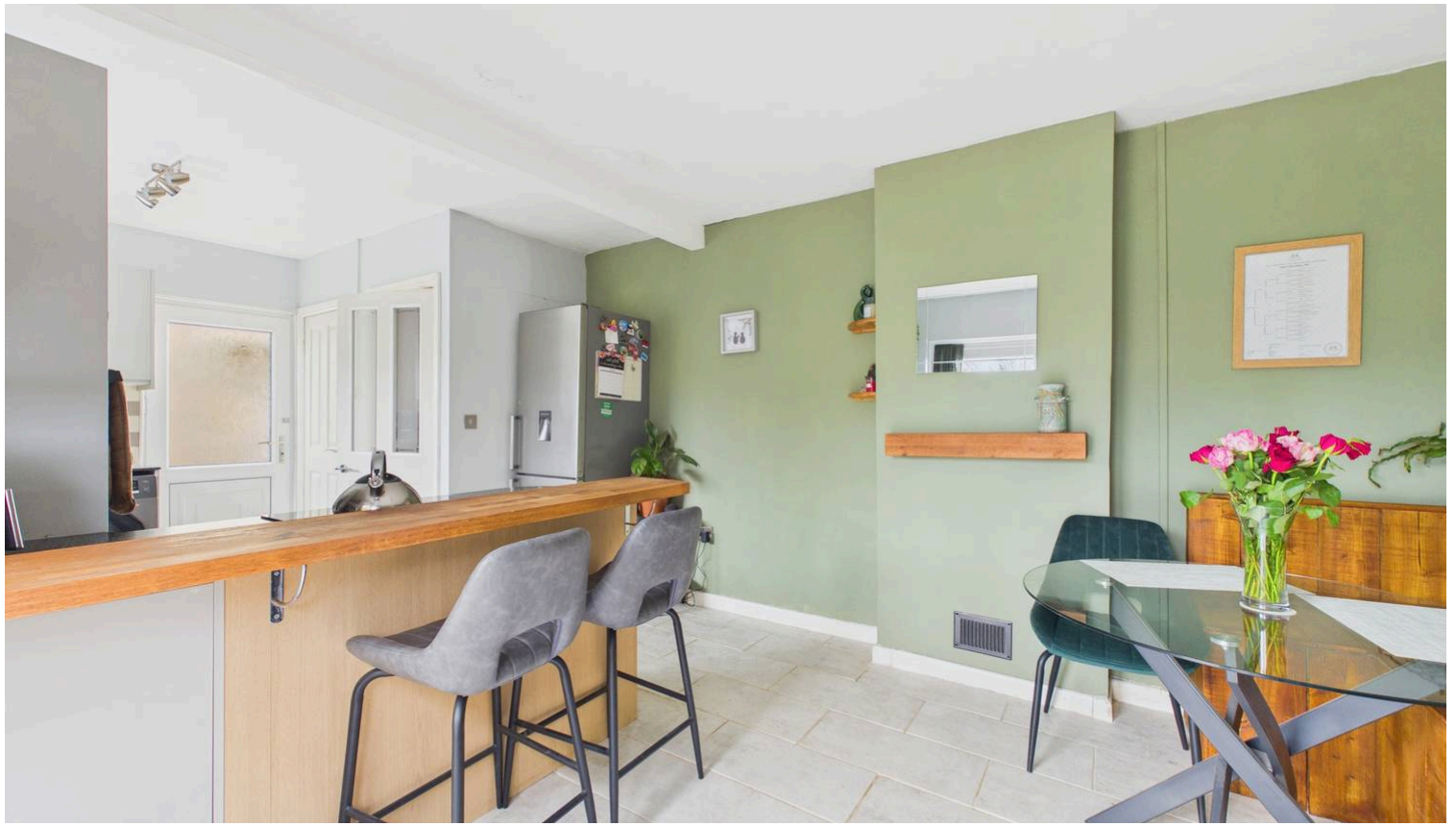
Tenure: Freehold

EPC Energy Efficiency Rating: D

EPC Environmental Impact Rating: D



blackbear



Hallway

6' 5" x 13' 9" (1.96m x 4.20m)

Living Room

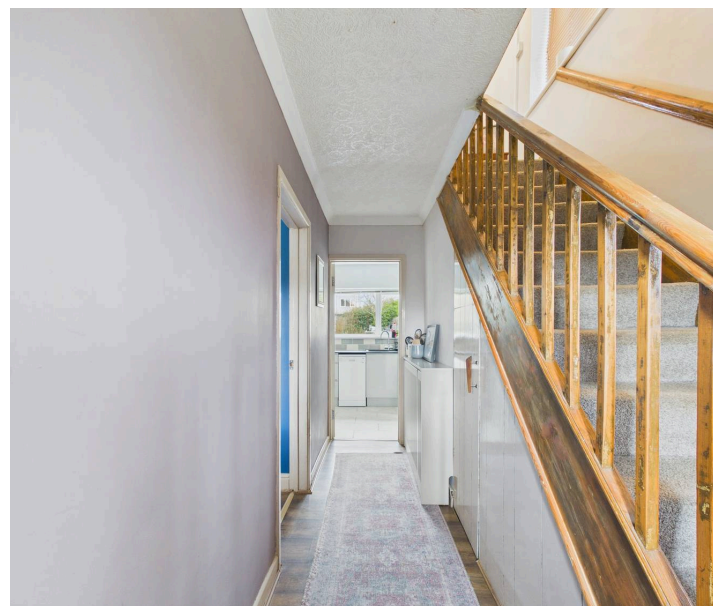
14' 5" x 10' 4" (4.40m x 3.15m)

Kitchen / Diner

21' 5" x 10' 8" (6.53m x 3.24m)

Landing

10' 0" x 3' 0" (3.06m x 0.91m)





Bedroom 1

10' 10" x 10' 4" (3.31m x 3.15m)

Bedroom 2

9' 1" x 10' 8" (2.76m x 3.25m)

Bedroom 3

6' 8" x 9' 3" (2.04m x 2.83m)

Bathroom

10' 1" x 6' 4" (3.07m x 1.93m)



blackbear



FRONT GARDEN

GARDEN



blackbear

